

EK459 VarioPipe

Optical fibre building cable & pipe entry system

The VarioPipe optical fibre building cable & pipe entry system was developed especially for the insertion of micro-ducts into buildings and through building walls for connecting subscribers to the optical fibre network.

The building cable & pipe entry system can also be used with other media cables, such as copper telecommunication cables or oval cables, and is suitable for all common wall types, such as waterproof concrete, bricks or hollow blocks. The foam-fill principle along the drill channel and the media cable guarantees absolute seal tightness.

Advantages

Outstanding flexibility

- Horizontal or inclined installation up to 45°(continuous)
- Quick and easy installation in just a few minutes
- Secure hold of the foam pipe in the hole thanks to clamping ribs
- Optimum distribution of the sealing foam in any situation
- Inexpensive installation thanks to minimal foundation pit at the outer wall
- Suitable for all wall thicknesses from 200 mm
- Moulded dust protection cap for different diameters

Maximum possible safety

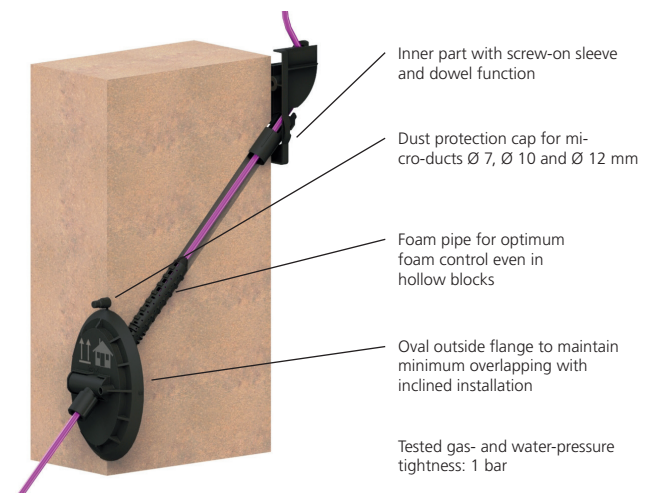
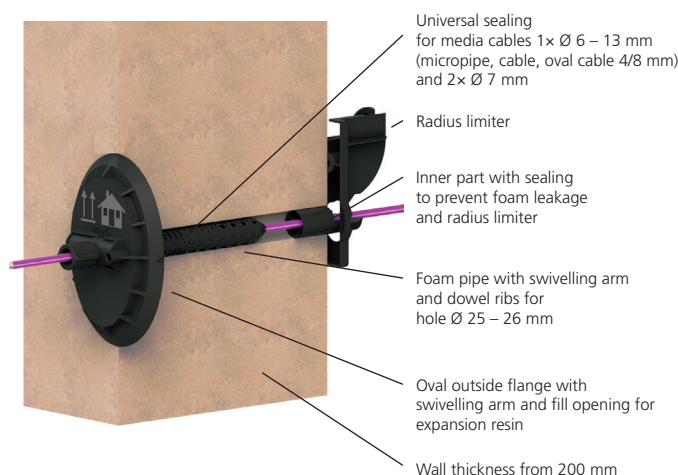
- Meets the requirements of the new DIN 18533
- Reliable sealing through expanding 2-component resin
- Sealing prevents foam from escaping on inside of building
- Secure hold of the foam pipe in the hole thanks to clamping ribs
- Inner bend radius limiter R60 (mm) with fastener for different diameters
- Gas- and water-pressure-tight up to 1 bar according to DIN 18533 W1.1-E, W1.2-E, W2.1-E
- Waterproof concrete stress class 1 (DAfStb 2017)
- Waterproof concrete stress class 2 (DAfStb 2017)



▲ Inclined installation



▲ Installed straight with cover



EK459 VarioPipe

Optical fibre building cable & pipe entry system

Technical data

Designation	Optical fibre building cable & pipe entry system EK459 VarioPipe
Weight per building cable & pipe entry system	approx. 150 g + 100 ml of expanding 2-component resin (in a cartridge)
Outside flange material	Polyethylene (PE)
Dimensions	173 mm x 125 mm x 30 mm
Foam pipe material	Polyamide (PA)
Dimensions	Ø 25 mm x 225 mm
Inner part material	Acrylonitrile butadiene styrene (ABS)
Dimensions	131 mm x 50 mm x 60 mm
Seal	Ø 6 - 13 mm
Material	Thermoplastic elastomer (TPE)
Dimensions	Ø 28 mm x 26 mm
Seal	2 x Ø 7 mm
Material	Polyethylene (PE)
Dimensions	Ø 28 mm x 42 mm
Installation position	Up to 45° continuously
Media cable assignment	Ø 6-13 mm Alternatively 2x Ø 7 mm
Gas- and water-pressure-tight	1 bar
Required wall thicknesses	≥ 200 mm
Packaging unit	12 pcs
Packaging weight	Approx. 6 kg
Dimensions	590 mm x 240 mm x 270 mm

	Optical fibre building cable & pipe entry system VarioPipe	Optical fibre building cable & pipe entry system VarioPipe	Expanding 2-component resin for the optical fibre building cable & pipe entry system VarioPipe
Article number	094592001	094592003	700699560
Description	Each packaging unit contains 12 pcs. including expanding 2-component resin	Each packaging unit contains 18 pcs. <u>without</u> expanding 2-component resin	Packaging unit = 18 pcs.

Accessories

Cover for VarioPipe optical fibre building cable & pipe entry system EK459

Designation	Cover for optical fibre building cable & pipe entry system EK459 VarioPipe
Material	Polycarbonate (PC) with matt finish
Colour	RAL 9016 Traffic white
IK degree of shock resistance	IK05
Article number	094592020/012
Packaging unit	12 pcs.



▲ Cover for inner part



▲ Inner part