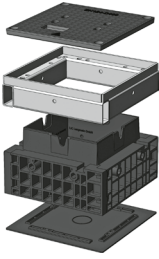


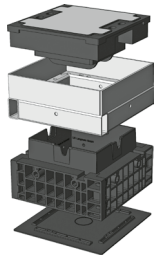


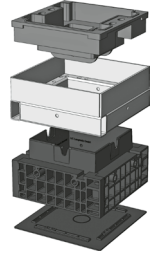
QualityBox PC EK268

Basic kits

Clear dimensions: 250 x 250 mm
External dimensions: 400 x 400 mm

Basic kit with cast-iron cover:			Clear height: 200 mm with special height: 126 mm
Test classes according to DIN EN 124	B 125²	D 400³	
Cover	15.0 kg	15.0 kg	
Hot-dip galvanised steel frame	9.0 kg	9.0 kg	
Top frame (standard height)	4.5 kg	4.5 kg	
Base plate	0.5 kg	0.5 kg	
Total weight of basic kit	29.0 kg	29.0 kg	
Overall height of basic kit	240 mm	240 mm	

Basic kit with concrete-lined cast-iron cover:			Clear height: 145 mm
Test classes according to DIN EN 124		D 400³	
Cover		35.0 kg	
Hot-dip galvanised steel frame		12.5 kg	
Top frame (standard height)		4.5 kg	
Base plate		0.5 kg	
Total weight of basic kit		52.5 kg	
Overall height of basic kit		295 mm	

Basic kit with paveable cast-iron cover: (paveable height 45 mm)			Clear height: 145 mm
Test classes according to DIN EN 124		D 400³	
Cover (non-paveable)		28.0 kg	
Hot-dip galvanised steel frame		12.5 kg	
Top frame (standard height)		4.5 kg	
Base plate		0.5 kg	
Total weight of basic kit		45.5 kg	
Overall height of basic kit		295 mm	



QualityBox PC EK268

Frame

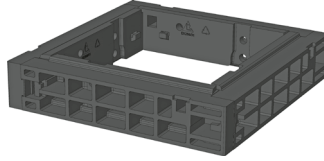
Clear dimensions: 250 x 250 mm
External dimensions: 400 x 400 mm

220 mm



Frame 220 mm
Art. no.: 06 268 0066E
1 x Ø110
1 x Ø110
Weight: 6 kg

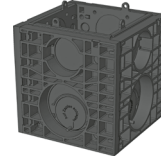
70 mm



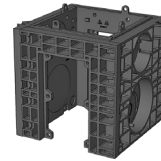
Frame 70 mm
Art. no.: 06 268 0058E

Weight: 2.5 kg

350 mm



Frame 350 mm
Art. no.: 06 268 0059E
4 x Ø 30 / 2 x Ø 110 / 1 x Ø 160
4 x Ø 30 / 2 x Ø 110 / 1 x Ø 160
Weight: 10 kg



Frame 350 mm overbuild
Art. no.: 06 268 0089E
4 x Ø 30 / 2 x Ø 110 / 1 x Ø 160
1 x rectangular
Weight: 8.5 kg



QualityBox PC EK268

Order numbers

Clear dimensions: 250 x 250 mm

External dimensions: 400 x 400 mm

Manhole with cast-iron cover, screwed down ⁴	Order number
Basic kit B 125, not screwed, screw connection retrofittable	06 268 6001
Basic kit D 400, hex screw connection	06 268 6153
Basic kit D 400, hex socket screw connection	06 268 6071
Basic kit D 400, LIC-LOCK screw connection	06 268 1008
Basic kit D 400, COLT/TELENET screw connection	06 268 1009
Accessories for cast-iron cover, screwed down	
4 x hex screw connections	50 000 2200
4 x hexagon socket screw connections	50 000 2300
4 x LIC-LOCK screw connections	50 000 2400
4 x COLT/TELENET screw connections	50 000 2450
Sealing plug for screw connection, black	70 043 0300
Cast-iron cover B 125, 1-piece	70 035 2801E
Cast-iron cover D 400, 1-piece ⁴	70 035 2800E
Steel frame	70 035 3600E

Manhole with cast-iron cover, screwed down ⁴ Special height 165 mm	Order number
Basic kit B 125, not screwed, screw connection retrofittable	06 268 6170
Basic kit D 400, hex screw connection	06 268 6171
Basic kit D 400, hex socket screw connection	06 268 6216
Basic kit D 400, LIC-LOCK screw connection	06 268 6160
Basic kit D 400, COLT/TELENET screw connection	06 268 6129
Accessories for cast-iron cover, screwed down	
4 x hex screw connections	50 000 2200
4 x hexagon socket screw connections	50 000 2300
4 x LIC-LOCK screw connections	50 000 2400
4 x COLT/TELENET screw connections	50 000 2450
Sealing plug for screw connection, black	70 043 0300
Cast-iron cover B 125, 1-piece	70 035 2801E
Cast-iron cover D 400, 1-piece ⁴	70 035 2800E
Steel frame	70 035 3600E

Manhole with concrete-lined cast-iron cover, not screwed down	Order number
Basic kit D 400	06 268 6260
Accessories for concrete-lined cast-iron cover, not screwed down	
Concrete-lined cast-iron cover, D 400, 1-piece ⁴	70 037 6300E
Steel frame	70 035 3610E

Manhole with paveable cast-iron cover, not screwed down	Order number
Basic kit D 400	06 268 6261
Accessories for paveable cast-iron cover, not screwed down	
Paveable cast-iron cover, D 400, 1-piece ⁴	70 036 5600E
Steel frame	70 035 3610E

For all basic kits	Order number
Top frame, height 66 mm	06 268 0092E
Top frame, height 140 mm	06 268 0082E
Base plate, height 5 mm	06 268 0054E