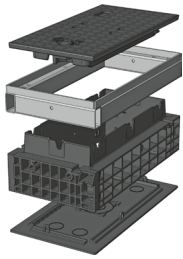


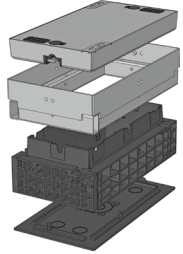


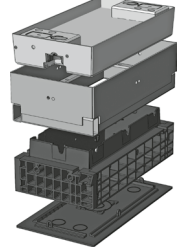
# QualityBox PC EK278

## Basic kits

Clear dimensions: 250 x 550 mm  
External dimensions: 400 x 695 mm

Basic kit with <b>cast-iron</b> cover:			Clear height: 161 mm
Test classes according to DIN EN 124	<b>B 125<sup>2</sup></b>	<b>D 400<sup>3</sup></b>	
Cover	32.0 kg	32.0 kg	
Hot-dip galvanised steel frame	13.0 kg	13.0 kg	
Top frame (standard height)	7.0 kg	7.0 kg	
Base plate	1.0 kg	1.0 kg	
<b>Total weight of basic kit</b>	<b>53.0 kg</b>	<b>53.0 kg</b>	
<b>Overall height of basic kit</b>	<b>240 mm</b>	<b>240 mm</b>	

Basic kit with <b>concrete-lined steel</b> cover:			Clear height: 210 mm
Test classes according to DIN EN 124	<b>B 125<sup>2</sup></b>	<b>D 400<sup>3</sup></b>	
Cover	45.0 kg	45.0 kg	
Hot-dip galvanised steel frame	20.0 kg	20.0 kg	
Top frame (standard height)	7.0 kg	7.0 kg	
Base plate	1.0 kg	1.0 kg	
<b>Total weight of basic kit</b>	<b>73.0 kg</b>	<b>73.0 kg</b>	
<b>Overall height of basic kit</b>	<b>295 mm</b>	<b>295 mm</b>	

Basic kit with <b>paveable</b> steel cover: (paveable height 45 mm)			Clear height: 210 mm
Test classes according to DIN EN 124	<b>B 125<sup>2</sup></b>	<b>D 400<sup>3</sup></b>	
Cover (non-paveable)	51.0 kg	51.0 kg	
Hot-dip galvanised steel frame	25.0 kg	25.0 kg	
Top frame (standard height)	7.0 kg	7.0 kg	
Base plate	1.0 kg	1.0 kg	
<b>Total weight of basic kit</b>	<b>84.0 kg</b>	<b>84.0 kg</b>	
<b>Overall height of basic kit</b>	<b>340 mm</b>	<b>340 mm</b>	

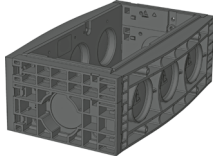


# QualityBox PC EK278

Frame / Vario Module

Clear dimensions: 250 x 550 mm  
External dimensions: 400 x 695 mm

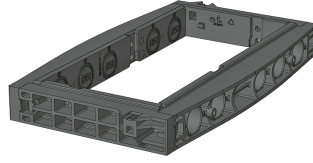
220 mm



**Frame 220 mm**  
Art. no.: 06 278 0053E

Weight: 9.0 kg

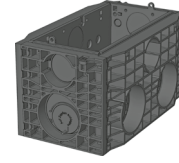
70 mm



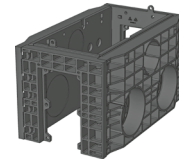
**Frame 70 mm**  
Art. no.: 06 278 0058E

Weight: 4.0 kg

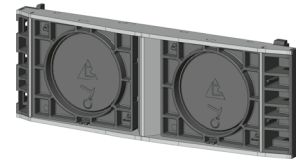
350 mm / Vario Module



**Frame 350 mm**  
Art. no.: 06 278 0059E  
4 x Ø 30 / 1x Ø 110 / 1 x Ø 160  
6 x Ø 30 / 3 x Ø 110 / 2 x Ø 160  
Weight: 16.0 kg



**Frame 350 mm**  
Art. no.: 06 278 0089E  
1 x rectangular  
6 x Ø 30 / 3 x Ø 110 / 2 x Ø 160  
Weight: 15.0 kg



**Vario Module**  
Art. no.: 06 278 0351E  
CD550 2 x 160 mm



## QualityBox PC EK278

### Order numbers

Clear dimensions: 250 x 550 mm

External dimensions: 400 x 695 mm

<b>Manhole with cast-iron cover, lockable <sup>4</sup></b>	<b>Order number</b>
Basic kit B 125, without lock, locks retrofittable	06 278 2337
Basic kit D 400, hex locking mechanism	06 278 2343
Basic kit D 400, hexagon socket locking mechanism	06 278 2344
Basic kit D 400, LIC-LOCK locking mechanism	06 278 2345
Basic kit D 400, COLT/TELENET locking mechanism	06 278 2346
<b>Accessories for cast-iron cover, lockable</b>	
1 x hex locking mechanism	50 000 6020
1 x hexagon socket locking mechanism	50 000 6040
1 x LIC-LOCK locking mechanism	50 000 6060
1 x COLT/TELENET locking mechanism	50 000 6080
Sealing plug for locking mechanism, black	70 046 0716
Cast-iron cover B 125, 1-piece	70 035 3081E
Cast-iron cover D 400, 1-piece <sup>4</sup>	70 035 3080E
Steel frame	70 035 4080E
<b>Manhole with concrete-lined steel cover, lockable <sup>4</sup></b>	<b>Order number</b>
Basic kit B 125, without lock, locks retrofittable	06 278 2150
Basic kit D 400, hex locking mechanism	06 278 2151
Basic kit D 400, hexagon socket locking mechanism	06 278 2152
Basic kit D 400, LIC-LOCK locking mechanism	06 278 2153
Basic kit D 400, COLT/TELENET locking mechanism	06 278 2154
<b>Accessories for concrete-lined steel cover, lockable</b>	
2 x hex locking mechanisms	50 000 6100
2 x hexagon socket locking mechanisms	50 000 7100
2 x LIC-LOCK locking mechanisms	50 000 8100
2 x COLT/TELENET locking mechanisms	50 000 9100
Sealing plug for locking mechanism, black	70 046 0716
Concrete-lined steel cover, B 125, 1-piece	70 040 5785E
Concrete-lined steel cover, D 400, 1-piece <sup>4</sup>	70 040 5780E
Steel frame	70 039 6280E
<b>Manhole with paveable steel cover, lockable <sup>4</sup></b>	<b>Order number</b>
Basic kit B 125, without lock, locks retrofittable	06 278 2066
Basic kit D 400, without lock, locks retrofittable	06 278 2261
<b>Accessories for paveable steel cover, lockable</b>	
2 x hex locking mechanisms	50 000 6150
2 x hexagon socket locking mechanisms	50 000 6160
2 x LIC-LOCK locking mechanisms	50 000 6170
2 x COLT/TELENET locking mechanisms	50 000 6180
Sealing plug for locking mechanism, black	70 046 0716
Paveable steel cover, D 400, 1-piece <sup>4</sup>	70 088 1600E
Steel frame	70 088 1620E
<b>For all basic kits</b>	<b>Order number</b>
Top frame, height 66 mm	06 278 0091E
Top frame, height 140 mm	06 278 0082E
Base plate	06 278 0054E