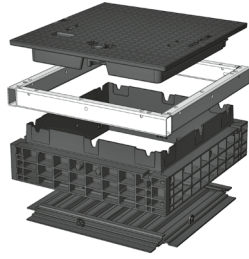


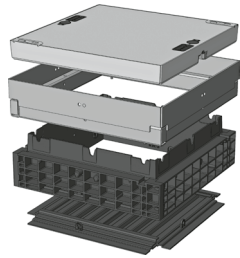


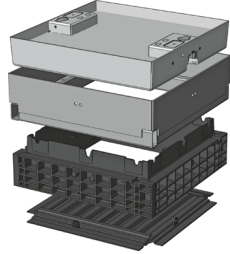
QualityBox PC EK288

Basic kits

Clear dimensions: 550 x 550 mm
External dimensions: 695 x 695 mm

Basic kit with cast-iron cover:			Clear height: 139 mm
Test classes according to DIN EN 124	B 125²	D 400³	
Cover	48.0 kg	48.0 kg	
Hot-dip galvanised steel frame	17.0 kg	17.0 kg	
Top frame (standard height)	10.0 kg	10.0 kg	
Base plate	2.5 kg	2.5 kg	
Total weight of basic kit	77.5 kg	77.5 kg	
Overall height of basic kit	240 mm	240 mm	

Basic kit with concrete-lined steel cover:			Clear height: 190 mm
Test classes according to DIN EN 124	B 125²	D 400³	
Cover	90.0 kg	90.0 kg	
Hot-dip galvanised steel frame	26.5 kg	26.5 kg	
Top frame (standard height)	10.0 kg	10.0 kg	
Base plate	2.5 kg	2.5 kg	
Total weight of basic kit	129.0 kg	129.0 kg	
Overall height of basic kit	295 mm	295 mm	

Basic kit with paveable steel cover: (paveable height 45 mm)			Clear height: 190 mm
Test classes according to DIN EN 124	B 125²	D 400³	
Cover (non-paveable)	95.0 kg	95.0 kg	
Hot-dip galvanised steel frame	32.0 kg	32.0 kg	
Top frame (standard height)	10.0 kg	10.0 kg	
Base plate	2.5 kg	2.5 kg	
Total weight of basic kit	139.5 kg	139.5 kg	
Overall height of basic kit	340 mm	340 mm	

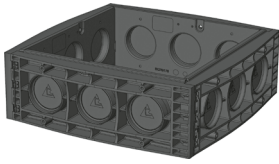


QualityBox PC EK288

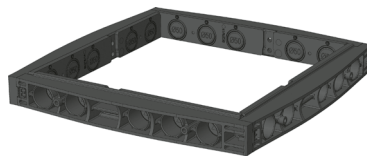
Frame / Vario Module

Clear dimensions: 550 x 550 mm
External dimensions: 695 x 695 mm

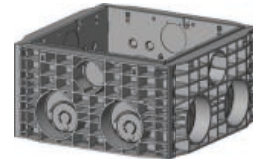
220 mm **70 mm** **350 mm / Vario Module**



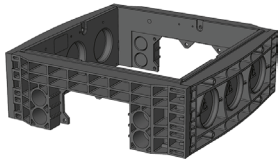
Frame 220 mm
Art. no.: 06 288 0053E
3 x Ø 110
3 x Ø 110
Weight: 12.5 kg



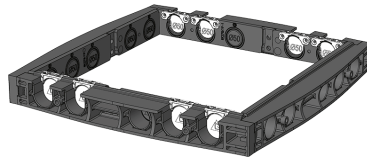
Frame 70 mm
Art. no.: 06 288 0058E
5 x Ø 50
5 x Ø 50
Weight: 6.0 kg



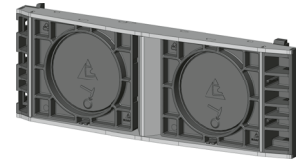
Frame 350 mm
Art. no.: 06 288 0059E
6 x Ø30 / 3 x Ø 110 / 2 x Ø 160
6 x Ø30 / 3 x Ø 110 / 2 x Ø 160
Weight: 22.0 kg



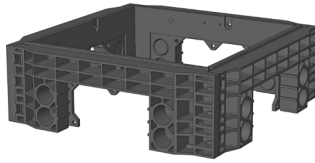
Frame 220 mm overbuild
Art. no.: 06 288 0083E
3 x Ø 110
4 x Ø 50 / 1 x rectangular
Weight: 13.0 kg



Frame 70 mm overbuild
Art. no.: 06 288 0358E
4 x overbuild / 1 x Ø 50
5 x Ø 50
Weight: 5.0 kg



Vario Module
Art. no.: Art. no.: 06 278 0351E
CD550 2 x 160 mm



Frame 220 mm overbuild
Art. no.: 06 288 0084E
4 x Ø 50 / 1 x rectangular
1 x rectangular
Weight: 13.0 kg



Frame 70 mm overbuild
Art. no.: 06 288 0359E
4 x overbuild / 1 x Ø 50
4 x overbuild / 1 x Ø 50
Weight: 4.5 kg

Änderungen vorbehalten | Stand 04-2024



QualityBox PC EK288

Order numbers

Clear dimensions: 550 x 550 mm

External dimensions: 695 x 695 mm

Manhole with cast-iron cover, lockable⁴	Order number
Basic kit B 125, without lock, locks retrofittable	06 288 2355
Basic kit D 400, hex locking mechanism	06 288 2326
Basic kit D 400, hexagon socket locking mechanism	06 288 2488
Basic kit D 400, LIC-LOCK locking mechanism	06 288 2539
Basic kit D 400, COLT/TELENET locking mechanism	06 288 2607
Accessories for cast-iron cover, lockable	
1 x hex locking mechanism	50 000 6020
1 x hexagon socket locking mechanism	50 000 6040
1 x LIC-LOCK locking mechanism	50 000 6060
1 x COLT/TELENET locking mechanism	50 000 6080
Sealing plug for locking mechanism, black	70 046 0716
Cast-iron cover B 125, 1-piece	70 034 3581E
Cast-iron cover D 400, 1-piece ⁴	70 034 3580E
Steel frame	70 034 4980E
Manhole with concrete-lined steel cover, lockable⁴	Order number
Basic kit B 125, without lock, locks retrofittable	06 288 2281
Basic kit D 400, hex locking mechanism	06 288 2282
Basic kit D 400, hexagon socket locking mechanism	06 288 2283
Basic kit D 400, LIC-LOCK locking mechanism	06 288 2284
Basic kit D 400, COLT/TELENET locking mechanism	06 288 2285
Accessories for concrete-lined steel cover, lockable	
2 x hex locking mechanisms	50 000 6100
2 x hexagon socket locking mechanisms	50 000 7100
2 x LIC-LOCK locking mechanisms	50 000 8100
2 x COLT/TELENET locking mechanisms	50 000 9100
Sealing plug for locking mechanism, black	70 046 0716
Concrete-lined steel cover, B 125, 1-piece	70 040 2685E
Concrete-lined steel cover, D 400, 1-piece ⁴	70 040 2680E
Steel frame	70 039 7180E
Manhole with paveable steel cover, lockable⁴	Order number
Basic kit B 125, without lock, locks retrofittable	06 288 2134
Basic kit D 400, without lock, locks retrofittable	06 288 2608
Accessories for paveable steel cover, lockable	
2 x hex locking mechanisms	50 000 6150
2 x hexagon socket locking mechanisms	50 000 6160
2 x LIC-LOCK locking mechanisms	50 000 6170
2 x COLT/TELENET locking mechanisms	50 000 6180
Sealing plug for locking mechanism, black	70 046 0716
Paveable steel cover, D 400, 1-piece ⁴	70 088 2200E
Steel frame	70 088 2220E
For all basic kits	Order number
Top frame, height 66 mm	06 288 0091E
Top frame, height 140 mm	06 288 0082E
Base plate, height 5 mm	06 288 0054E