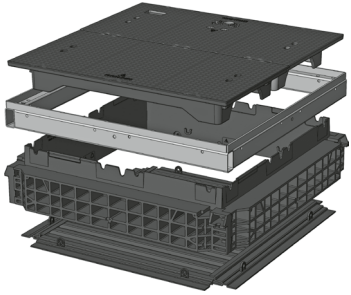


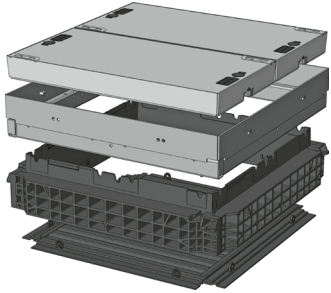


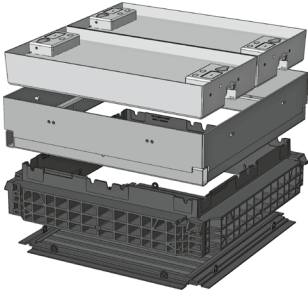
QualityBox PC EK328

Basic kits

Clear dimensions: 800 x 800 mm
External dimensions: 960 x 960 mm

Basic kit with cast-iron cover:			Clear height: 139 mm
Test classes according to DIN EN 124	B 125²	D 400³	
Complete cover	137.0 kg	137.0 kg	
Cover	68.5 kg	68.5 kg	
Hot-dip galvanised steel frame	24.0 kg	24.0 kg	
Top frame (standard height)	22.0 kg	22.0 kg	
Base plate	5.0 kg	5.0 kg	
Total weight of basic kit	188.0 kg	188.0 kg	
Overall height of basic kit	240 mm	240 mm	

Basic kit with concrete-lined steel cover:			Clear height: 190 mm
Test classes according to DIN EN 124	B 125²	D 400³	
Complete cover	203.0 kg	203.0 kg	
Cover	101.5 kg	101.5 kg	
Hot-dip galvanised steel frame	38.5 kg	38.5 kg	
Top frame (standard height)	22.0 kg	22.0 kg	
Base plate	5.0 kg	5.0 kg	
Total weight of basic kit	265.5 kg	265.5 kg	
Overall height of basic kit	310 mm	310 mm	

Basic kit with paveable steel cover: (paveable height 45 mm)			Clear height: 190 mm
Test classes according to DIN EN 124	B 125²	D 400³	
Complete cover (non-paveable)	214.0 kg	214.0 kg	
Cover (non-paveable)	107.0 kg	107.0 kg	
Hot-dip galvanised steel frame	47.0 kg	47.0 kg	
Top frame (standard height)	22.0 kg	22.0 kg	
Base plate	5.0 kg	5.0 kg	
Total weight of basic kit	288.0 kg	288.0 kg	
Overall height of basic kit	355 mm	355 mm	

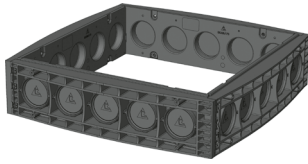


QualityBox PC EK328

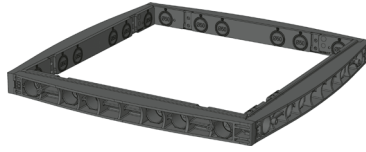
Frame / Vario Module

Clear dimensions: 800 x 800 mm
External dimensions: 960 x 960 mm

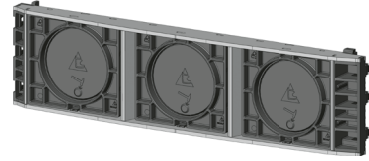
220 mm **70 mm** **Vario Module**



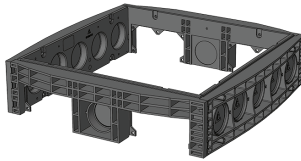
Frame 220 mm
Art. no.: 06 328 0052E
5 x Ø 110
5 x Ø 110
Weight: 20.5 kg



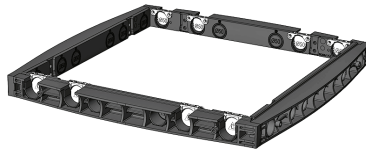
Frame 70 mm
Art. no.: 06 328 0058E
6 x Ø 50
6 x Ø 50
Weight: 8.0 kg



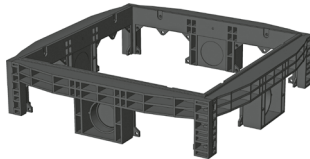
Vario Module
Art. no.: 06 328 0350E
CD800 3 x 160 mm



Frame 220 mm overbuild
Art. no.: 06 328 0061E
2 x rectangular / 1 x Ø 110
5 x Ø 110
Weight: 20.5 kg



Frame 70 mm overbuild
Art. no.: 06 328 0358E
4 x overbuild / 2 x Ø 50
6 x Ø 50
Weight: 8.0 kg



Frame 220 mm overbuild
Art. no.: 06 328 0094E
2 x rectangular / 1 x Ø 110
2 x rectangular / 1 x Ø 110
Weight: 20.0 kg



Frame 70 mm overbuild
Art. no.: 06 328 0359E
4 x overbuild / 2 x Ø 50
4 x overbuild / 2 x Ø 50
Weight: 8.0 kg

Änderungen vorbehalten | Stand 04-2024



QualityBox PC EK328

Order numbers

Clear dimensions: 800 x 800 mm

External dimensions: 960 x 960 mm

Manhole with cast-iron cover, lockable⁴	Order number
Basic kit B 125, without lock, locks retrofittable	06 328 2273
Basic kit D 400, hex locking mechanism	06 328 2306
Basic kit D 400, hexagon socket locking mechanism	06 328 2397
Basic kit D 400, LIC-LOCK locking mechanism	06 328 2398
Basic kit D 400, COLT/TELENET locking mechanism	06 328 2557
Accessories for cast-iron cover, lockable	
1 x hex locking mechanism	50 000 6020
1 x hexagon socket locking mechanism	50 000 6040
1 x LIC-LOCK locking mechanism	50 000 6060
1 x COLT/TELENET locking mechanism	50 000 6080
Sealing plug for locking mechanism, black	70 046 0716
Cast-iron cover B 125, 2-piece	70 052 0040E
Cast-iron cover D 400, 2-piece ⁴	70 052 0050E
Steel frame	70 034 5080E
Manhole with concrete-lined steel cover, lockable⁴	Order number
Basic kit B 125, without lock, locks retrofittable	06 328 2205
Basic kit D 400, hex locking mechanism	06 328 2206
Basic kit D 400, hexagon socket locking mechanism	06 328 2207
Basic kit D 400, LIC-LOCK locking mechanism	06 328 2208
Basic kit D 400, COLT/TELENET locking mechanism	06 328 2209
Accessories for concrete-lined steel cover, lockable	
4 x hex locking mechanisms	50 000 6300
4 x hexagon socket locking mechanisms	50 000 7300
4 x LIC-LOCK locking mechanisms	50 000 8300
4 x COLT/TELENET locking mechanisms	50 000 9300
Sealing plug for locking mechanism, black	70 046 0716
Concrete-lined steel cover, B 125, 2-piece	70 046 0475E
Concrete-lined steel cover, D 400, 2-piece ⁴	70 046 0470E
Steel frame	70 039 7880E
Manhole with paveable steel cover, lockable⁴	Order number
Basic kit B 125, without lock, locks retrofittable	06 328 2060
Basic kit D 400, without lock, locks retrofittable	06 328 2528
Accessories for paveable steel cover, lockable	
4 x hex locking mechanisms	50 000 6300
4 x hexagon socket locking mechanisms	50 000 7300
4 x LIC-LOCK locking mechanisms	50 000 8300
4 x COLT/TELENET locking mechanisms	50 000 9300
Sealing plug for locking mechanism, black	70 046 0716
Paveable steel cover, D 400, 2-piece ⁴	70 088 2600E
Steel frame D 400	70 088 2620E
For all basic kits	Order number
Top frame, height 66 mm	06 328 0182E
Top frame, height 140 mm	06 328 0082E
Base plate, height 5 mm	06 328 0054E