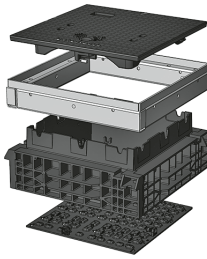


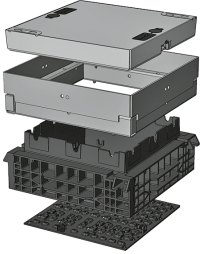


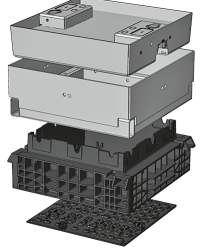
QualityBox PC EK358

Basic kits

Clear dimensions: 400 x 400 mm
External dimensions: 540 x 540 mm

Basic kit with cast-iron cover:			Clear height: 140 mm
Test classes according to DIN EN 124	B 125²	D 400³	
Cover	29.0 kg	29.0 kg	
Hot-dip galvanised steel frame	13.0 kg	13.0 kg	
Top frame (standard height)	7.5 kg	7.5 kg	
Base plate	1.5 kg	1.5 kg	
Total weight of basic kit	51.0 kg	51.0 kg	
Overall height of basic kit	240 mm	240 mm	

Basic kit with concrete-lined steel cover:			Clear height: 190 mm
Test classes according to DIN EN 124	B 125²	D 400³	
Cover	49.0 kg	49.0 kg	
Hot-dip galvanised steel frame	20.0 kg	20.0 kg	
Top frame (standard height)	7.5 kg	7.5 kg	
Base plate	1.5 kg	1.5 kg	
Total weight of basic kit	78.0 kg	78.0 kg	
Overall height of basic kit	295 mm	295 mm	

Basic kit with paveable steel cover: (paveable height 45 mm)			Clear height: 190 mm
Test classes according to DIN EN 124	B 125²	D 400³	
Cover (non-paveable)	55.0 kg	55.0 kg	
Hot-dip galvanised steel frame	24.0 kg	24.0 kg	
Top frame (standard height)	7.5 kg	7.5 kg	
Base plate	1.5 kg	1.5 kg	
Total weight of basic kit	88.0 kg	88.0 kg	
Overall height of basic kit	340 mm	340 mm	



QualityBox PC EK358

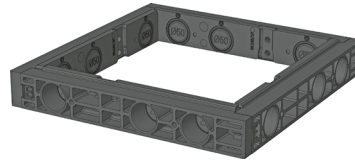
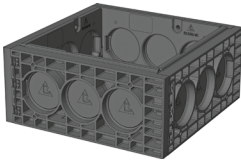
Frame

Clear dimensions: 400 x 400 mm

External dimensions: 540 x 540 mm

220 mm

70 mm



Frame 220 mm

Art. no.: 06 358 0052E

3 x Ø 110

3 x Ø 110

Weight: 8.5 kg

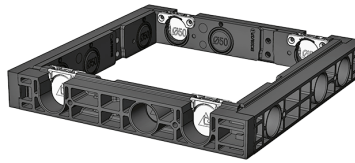
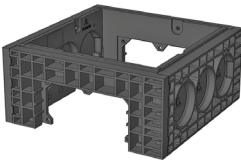
Frame 70 mm

Art. no.: 06 358 0058E

3 x Ø 50

3 x Ø 50

Weight: 4.0 kg



Frame 220 mm overbuild

Art. no.: 06 358 0073E

3 x Ø 110

1 x rectangular

Weight: 7.5 kg

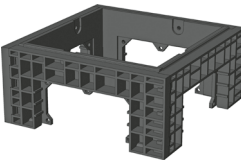
Frame 70 mm overbuild

Art. no.: 06 358 0358E

2 x overbuild / 1 x Ø 50

3 x Ø 50

Weight: 3.5 kg



Frame 220 mm overbuild

Art. no.: 06 358 0072E

1 x rectangular

1 x rectangular

Weight: 6.0 kg

Frame 70 mm overbuild

Art. no.: 06 358 0359E

2 x overbuild / 1 x Ø 50

2 x overbuild / 1 x Ø 50

Weight: 3.5 kg



QualityBox PC EK358

Order numbers

Clear dimensions: 400 x 400 mm

External dimensions: 540 x 540 mm

Manhole with cast-iron cover, lockable⁴	Order number
Basic kit B 125, without lock, locks retrofittable	06 358 1151
Basic kit D 400, hex locking mechanism	06 358 1150
Basic kit D 400, hexagon socket locking mechanism	06 358 1249
Basic kit D 400, LIC-LOCK locking mechanism	06 358 1164
Basic kit D 400, COLT/TELENET locking mechanism	06 358 1250
Accessories for cast-iron cover, lockable	
1 x hex locking mechanism	50 000 6020
1 x hexagon socket locking mechanism	50 000 6040
1 x LIC-LOCK locking mechanism	50 000 6060
1 x COLT/TELENET locking mechanism	50 000 6080
Sealing plug for locking mechanism, black	70 046 0716
Cast-iron cover B 125, 1-piece	70 033 9382E
Cast-iron cover D 400, 1-piece ⁴	70 033 9483E
Steel frame	70 034 5280E
Manhole with concrete-lined steel cover, lockable⁴	Order number
Basic kit B 125, without lock, locks retrofittable	06 358 1105
Basic kit D 400, hex locking mechanism	06 358 1106
Basic kit D 400, hexagon socket locking mechanism	06 358 1107
Basic kit D 400, LIC-LOCK locking mechanism	06 358 1108
Basic kit D 400, COLT/TELENET locking mechanism	06 358 1109
Accessories for concrete-lined steel cover, lockable	
2 x hex locking mechanisms	50 000 6100
2 x hexagon socket locking mechanisms	50 000 7100
2 x LIC-LOCK locking mechanisms	50 000 8100
2 x COLT/TELENET locking mechanisms	50 000 9100
Sealing plug for locking mechanism, black	70 046 0716
Concrete-lined steel cover, B 125, 1-piece	70 040 6385E
Concrete-lined steel cover, D 400, 1-piece ⁴	70 040 6380E
Steel frame	70 039 6680E
Manhole with paveable steel cover, lockable⁴	Order number
Basic kit B 125, without lock, locks retrofittable	06 358 1034
Basic kit D 400, without lock, locks retrofittable	06 358 1251
Accessories for paveable steel cover, lockable	
2 x hex locking mechanisms	50 000 6150
2 x hexagon socket locking mechanisms	50 000 6160
2 x LIC-LOCK locking mechanisms	50 000 6170
2 x COLT/TELENET locking mechanisms	50 000 6180
Sealing plug for locking mechanism, black	70 046 0716
Paveable steel cover, D 400, 1-piece ⁴	70 088 1700E
Steel frame	70 088 1720E
For all basic kits	Order number
Top frame, height 140 mm	06 358 0082E
Base plate, height 5 mm	06 358 0054E