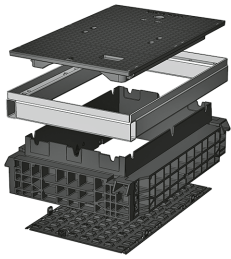


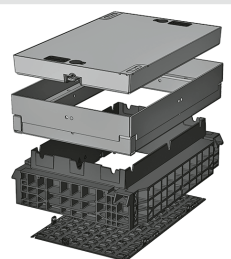


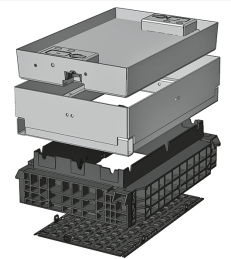
QualityBox PC EK368

Basic kits

Clear dimensions: 400 x 650 mm
External dimensions: 550 x 790 mm

Basic kit with cast-iron cover:			Clear height: 139 mm
Test classes according to DIN EN 124	B 125²	D 400³	
Cover	30.0 kg	41.0 kg	
Hot-dip galvanised steel frame	16.5 kg	16.5 kg	
Top frame (standard height)	11.0 kg	11.0 kg	
Base plate	2.0 kg	2.0 kg	
Total weight of basic kit	59.5 kg	70.5 kg	
Overall height of basic kit	240 mm	240 mm	

Basic kit with concrete-lined steel cover:			Clear height: 190 mm
Test classes according to DIN EN 124	B 125²	D 400³	
Cover	74.5 kg	74.5 kg	
Hot-dip galvanised steel frame	25.0 kg	25.0 kg	
Top frame (standard height)	11.0 kg	11.0 kg	
Base plate	2.0 kg	2.0 kg	
Total weight of basic kit	112.5 kg	112.5 kg	
Overall height of basic kit	295 mm	295 mm	

Basic kit with paveable steel cover: (paveable height 45 mm)			Clear height: 190 mm
Test classes according to DIN EN 124	B 125²	D 400³	
Cover (non-paveable)	80.0 kg	80.0 kg	
Hot-dip galvanised steel frame	30.5 kg	30.5 kg	
Top frame (standard height)	11.0 kg	11.0 kg	
Base plate	2.0 kg	2.0 kg	
Total weight of basic kit	123.5 kg	123.5 kg	
Overall height of basic kit	340 mm	340 mm	



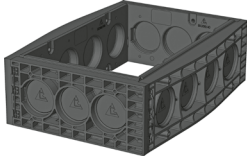
QualityBox PC EK368

Frame

Clear dimensions: 400 x 650 mm
External dimensions: 550 x 790 mm

220 mm

70 mm



Frame 220 mm

Art. no.: 06 368 0052E
3 x Ø 110
4 x Ø 110
Weight: 12.0 kg

Frame 70 mm

Art. no.: 06 368 0058E
3 x Ø 50
6 x Ø 50
Weight: 5.0 kg

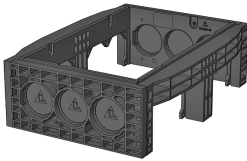


Frame 220 mm overbuild

Art. no.: 06 368 0073E
1 x rectangular
4 x Ø 110
Weight: 11.0 kg

Frame 70 mm overbuild

Art. no.: 06 368 0358E
2 x overbuild / 1 x Ø 50
6 x Ø 50
Weight: 5.0 kg

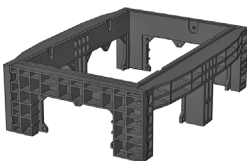


Frame 220 mm overbuild

Art. no.: 06 368 0074E
3 x Ø 110
2 x rectangular
Weight: 11.0 kg

Frame 70 mm overbuild

Art. no.: 06 368 0360E
3 x Ø 50
4 x overbuild / 2 x Ø 50
Weight: 5.0 kg



Frame 220 mm overbuild

Art. no.: 06 368 0072E
1 x rectangular
2 x rectangular
Weight: 10.0 kg

Frame 70 mm overbuild

Art. no.: 06 368 0359E
2 x overbuild / 1 x Ø 50
4 x overbuild / 2 x Ø 50
Weight: 4.5 kg



QualityBox PC EK368

Order numbers

Clear dimensions: 400 x 650 mm

External dimensions: 550 x 790 mm

Manhole with cast-iron cover, lockable⁴	Order number
Basic kit B 125, without lock, locks retrofittable	06 368 1349
Basic kit D 400, hex locking mechanism	06 368 1336
Basic kit D 400, hexagon socket locking mechanism	06 368 1528
Basic kit D 400, LIC-LOCK locking mechanism	06 368 1529
Basic kit D 400, COLT/TELENET locking mechanism	06 368 1530
Accessories for cast-iron cover, lockable	
1 x hex locking mechanism	50 000 6020
1 x hexagon socket locking mechanism	50 000 6040
1 x LIC-LOCK locking mechanism	50 000 6060
1 x COLT/TELENET locking mechanism	50 000 6080
Sealing plug for locking mechanism, black	70 046 0716
Cast-iron cover B 125, 1-piece	70 034 0282E
Cast-iron cover D 400, 1-piece ⁴	70 034 0181E
Steel frame	70 034 5380E

Manhole with concrete-lined steel cover, lockable⁴	Order number
Basic kit B 125, without lock, locks retrofittable	06 368 1213
Basic kit D 400, hex locking mechanism	06 368 1214
Basic kit D 400, hexagon socket locking mechanism	06 368 1215
Basic kit D 400, LIC-LOCK locking mechanism	06 368 1216
Basic kit D 400, COLT/TELENET locking mechanism	06 368 1217
Accessories for concrete-lined steel cover, lockable	
2 x hex locking mechanisms	50 000 6100
2 x hexagon socket locking mechanisms	50 000 7100
2 x LIC-LOCK locking mechanisms	50 000 8100
2 x COLT/TELENET locking mechanisms	50 000 9100
Sealing plug for locking mechanism, black	70 046 0716
Concrete-lined steel cover, B 125, 1-piece	70 046 3050E
Concrete-lined steel cover, D 400, 1-piece ⁴	70 046 3000E
Steel frame	70 039 6880E

Manhole with paveable steel cover, lockable⁴	Order number
Basic kit B 125, without lock, locks retrofittable	06 368 1062
Basic kit D 400, without lock, locks retrofittable	06 368 1531
Accessories for paveable steel cover, lockable	
2 x hex locking mechanisms	50 000 6150
2 x hexagon socket locking mechanisms	50 000 6160
2 x LIC-LOCK locking mechanisms	50 000 6170
2 x COLT/TELENET locking mechanisms	50 000 6180
Sealing plug for locking mechanism, black	70 046 0716
Paveable steel cover, D 400, 1-piece ⁴	70 088 1800E
Steel frame	70 088 1820E

For all basic kits	Order number
Top frame, height 140 mm	06 368 0082E
Base plate, height 5 mm	06 368 0054E