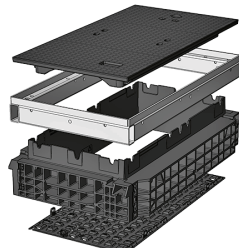


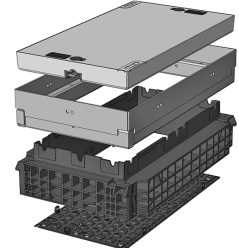


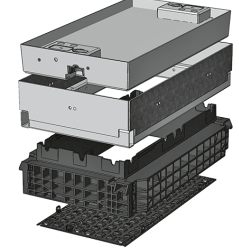
QualityBox PC EK378

Basic kits

Clear dimensions: 400 x 800 mm
External dimensions: 560 x 940 mm

Basic kit with cast-iron cover:			Clear height: 139 mm
Test classes according to DIN EN 124	B 125²	D 400³	
Cover	31.5 kg	45.0 kg	
Hot-dip galvanised steel frame	18.5 kg	18.5 kg	
Top frame (standard height)	15.0 kg	15.0 kg	
Base plate	2.5 kg	2.5 kg	
Total weight of basic kit	67.5 kg	81.0 kg	
Overall height of basic kit	240 mm	240 mm	

Basic kit with concrete-lined steel cover:			Clear height: 190 mm
Test classes according to DIN EN 124	B 125²	D 400³	
Cover	92.0 kg	92.0 kg	
Hot-dip galvanised steel frame	28.0 kg	28.0 kg	
Top frame (standard height)	15.0 kg	15.0 kg	
Base plate	2.5 kg	2.5 kg	
Total weight of basic kit	137.5 kg	137.5 kg	
Overall height of basic kit	295 mm	295 mm	

Basic kit with paveable steel cover: (paveable height 45 mm)			Clear height: 190 mm
Test classes according to DIN EN 124	B 125²	D 400³	
Cover (non-paveable)	99.0 kg	99.0 kg	
Hot-dip galvanised steel frame	34.5 kg	34.5 kg	
Top frame (standard height)	15.0 kg	15.0 kg	
Base plate	2.5 kg	2.5 kg	
Total weight of basic kit	151.0 kg	151.0 kg	
Overall height of basic kit	340 mm	340 mm	



QualityBox PC EK378

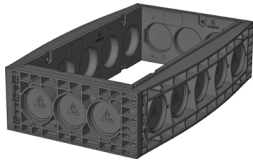
Frame / Vario Module

Clear dimensions: 400 x 800 mm
External dimensions: 560 x 940 mm

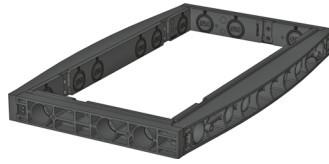
220 mm

70 mm

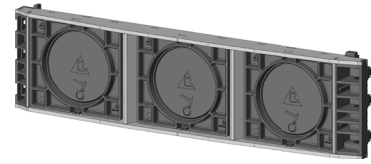
Vario Module



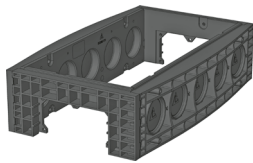
Frame 220 mm
Art. no.: 06 378 0052E
3 x Ø 110
5 x Ø 110
Weight: 14.5 kg



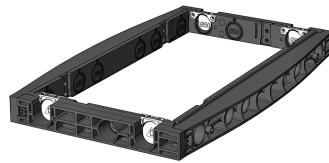
Frame 70 mm
Art. no.: 06 378 0058E
3 x Ø 50
6 x Ø 50
Weight: 6.0 kg



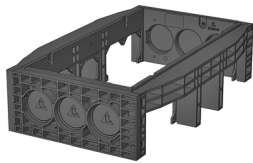
Vario Module
Art. no.: 06 328 0350E
CD800 3 x 160 mm



Frame 220 mm overbuild
Art. no.: 06 378 0077E
1 x rectangular
5 x Ø 110
Weight: 13.5 kg



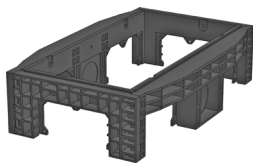
Frame 70 mm overbuild
Art. no.: 06 378 0358E
2 x overbuild / 1 x Ø 50
6 x Ø 50
Weight: 6.0 kg



Frame 220 mm overbuild
Art. no.: 06 378 0061E
3 x Ø 110
2 x rectangular / 1 x Ø 110
Weight: 14.5 kg



Frame 70 mm overbuild
Art. no.: 06 378 0360E
3 x Ø 50
4 x overbuild / 2 x Ø 50
Weight: 6.0 kg



Frame 220 mm overbuild
Art. no.: 06 378 0053E
1 x rectangular
2 x rectangular / 1 x Ø 110
Weight: 13.0 kg



Frame 70 mm overbuild
Art. no.: 06 378 0359E
2 x overbuild / 1 x Ø 50
4 x overbuild / 2 x Ø 50
Weight: 6.0 kg



QualityBox PC EK378

Order numbers

Clear dimensions: 400 x 800 mm

External dimensions: 560 x 940 mm

Manhole with cast-iron cover, lockable⁴	Order number
Basic kit B 125, without lock, locks retrofittable	06 378 1194
Basic kit D 400, hex locking mechanism	06 378 1219
Basic kit D 400, hexagon socket locking mechanism	06 378 1334
Basic kit D 400, LIC-LOCK locking mechanism	06 378 1335
Basic kit D 400, COLT/TELENET locking mechanism	06 378 1336
Accessories for cast-iron cover, lockable	
1 x hex locking mechanism	50 000 6020
1 x hexagon socket locking mechanism	50 000 6040
1 x LIC-LOCK locking mechanism	50 000 6060
1 x COLT/TELENET locking mechanism	50 000 6080
Sealing plug for locking mechanism, black	70 046 0716
Cast-iron cover B 125, 1-piece	70 035 0581E
Cast-iron cover D 400, 1-piece ⁴	70 078 7100
Steel frame	70 034 5480E
Manhole with concrete-lined steel cover, lockable⁴	Order number
Basic kit B 125, without lock, locks retrofittable	06 378 1153
Basic kit D 400, hex locking mechanism	06 378 1154
Basic kit D 400, hexagon socket locking mechanism	06 378 1155
Basic kit D 400, LIC-LOCK locking mechanism	06 378 1156
Basic kit D 400, COLT/TELENET locking mechanism	06 378 1157
Accessories for concrete-lined steel cover, lockable	
2 x hex locking mechanisms	50 000 6100
2 x hexagon socket locking mechanisms	50 000 7100
2 x LIC-LOCK locking mechanisms	50 000 8100
2 x COLT/TELENET locking mechanisms	50 000 9100
Sealing plug for locking mechanism, black	70 046 0716
Concrete-lined steel cover, B 125, 1-piece	70 045 2255E
Concrete-lined steel cover, D 400, 1-piece ⁴	70 045 2200E
Steel frame	70 045 2100E
Manhole with paveable steel cover, lockable⁴	Order number
Basic kit B 125, without lock, locks retrofittable	06 378 1038
Basic kit D 400, without lock, locks retrofittable	06 378 1344
Accessories for paveable steel cover, lockable	
2 x hex locking mechanisms	50 000 6150
2 x hexagon socket locking mechanisms	50 000 6160
2 x LIC-LOCK locking mechanisms	50 000 6170
2 x COLT/TELENET locking mechanisms	50 000 6180
Sealing plug for locking mechanism, black	70 046 0716
Paveable steel cover, D 400, 1-piece ⁴	70 088 1900E
Steel frame	70 088 1920E
For all basic kits	Order number
Top frame, height 140 mm	06 378 0082E
Base plate, height 5 mm	06 378 0054E