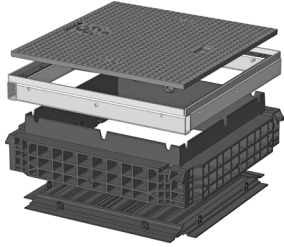


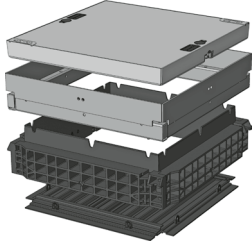


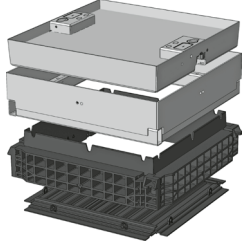
QualityBox PC EK388

Basic kits

Clear dimensions: 650 x 650 mm
External dimensions: 800 x 800 mm

Basic kit with cast-iron cover:		Clear height: 140 mm
Test classes according to DIN EN 124	D 400³	
Cover	69.0 kg	
Hot-dip galvanised steel frame	20.0 kg	
Top frame (standard height)	14.5 kg	
Base plate	3.5 kg	
Total weight of basic kit	107.0 kg	
Overall height of basic kit	240 mm	

Basic kit with concrete-lined steel cover:			Clear height: 190 mm
Test classes according to DIN EN 124	B 125²	D 400³	
Cover	125.0 kg	125.0 kg	
Hot-dip galvanised steel frame	30.5 kg	30.5 kg	
Top frame (standard height)	14.5 kg	14.5 kg	
Base plate	3.5 kg	3.5 kg	
Total weight of basic kit	173.5 kg	173.5 kg	
Overall height of basic kit	295 mm	295 mm	

Basic kit with paveable steel cover: (paveable height 45 mm)			Clear height: 190 mm
Test classes according to DIN EN 124	B 125²	D 400³	
Cover (non-paveable)	132.0 kg	132.0 kg	
Hot-dip galvanised steel frame	37.0 kg	37.0 kg	
Top frame (standard height)	14.5 kg	14.5 kg	
Base plate	3.5 kg	3.5 kg	
Total weight of basic kit	187.0 kg	187.0 kg	
Overall height of basic kit	340 mm	340 mm	



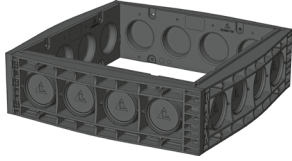
QualityBox PC EK388

Frame

Clear dimensions: 650 x 650 mm
External dimensions: 800 x 800 mm

220 mm

70 mm

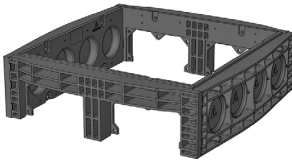


Frame 220 mm

Art. no.: 06 388 0052E
4 x Ø 110
4 x Ø 110
Weight: 15.5 kg

Frame 70 mm

Art. no.: 06 388 0058E
6 x Ø 50
6 x Ø 50
Weight: 6.0 kg



Frame 220 mm overbuild

Art. no.: 06 388 0073E
2 x rectangular
4 x Ø 110
Weight: 14.5 kg

Frame 70 mm overbuild

Art. no.: 06 388 0358E
4 x overbuild / 2 x Ø 50
6 x Ø 50
Weight: 6.0 kg



Frame 220 mm overbuild

Art. no.: 06 328 0094E
2 x rectangular
2 x rectangular
Weight: 13.5 kg

Frame 70 mm overbuild

Art. no.: 06 388 0359E
4 x overbuild / 2 x Ø 50
4 x overbuild / 2 x Ø 50
Weight: 6.0 kg



QualityBox PC EK388

Order numbers

Clear dimensions: 650 x 650 mm

External dimensions: 800 x 800 mm

Manhole with cast-iron cover, lockable⁴	Order number
Basic kit D 400, hex locking mechanism	06 388 1021
Basic kit D 400, hexagon socket locking mechanism	06 388 1022
Basic kit D 400, LIC-LOCK locking mechanism	06 388 1024
Basic kit D 400, COLT/TELENET locking mechanism	06 388 1025
Accessories for cast-iron cover, lockable	
1 x hex locking mechanism	50 000 6020
1 x hexagon socket locking mechanism	50 000 6040
1 x LIC-LOCK locking mechanism	50 000 6060
1 x COLT/TELENET locking mechanism	50 000 6080
Sealing plug for locking mechanism, black	70 046 0716
Cast-iron cover, D 400, one-piece ⁴	70 083 7900E
Steel frame	70 083 8100E
Manhole with concrete-lined steel cover, lockable⁴	Order number
Basic kit B 125, without lock, locks retrofittable	06 388 1049
Basic kit D 400, hex locking mechanism	06 388 1050
Basic kit D 400, hexagon socket locking mechanism	06 388 1051
Basic kit D 400, LIC-LOCK locking mechanism	06 388 1052
Basic kit D 400, COLT/TELENET locking mechanism	06 388 1053
Accessories for concrete-lined steel cover, lockable	
2 x hex locking mechanisms	50 000 6100
2 x hexagon socket locking mechanisms	50 000 7100
2 x LIC-LOCK locking mechanisms	50 000 8100
2 x COLT/TELENET locking mechanisms	50 000 9100
Sealing plug for locking mechanism, black	70 046 0716
Concrete-lined steel cover, B 125, 1-piece	70 040 4585E
Concrete-lined steel cover, D 400, 1-piece ⁴	70 040 4580E
Steel frame	70 039 7580E
Manhole with paveable steel cover, lockable⁴	Order number
Basic kit B 125, without lock, locks retrofittable	06 388 1003
Basic kit D 400, without lock, locks retrofittable	06 388 1155
Accessories for paveable steel cover, lockable	
2 x hex locking mechanisms	50 000 6150
2 x hexagon socket locking mechanisms	50 000 6160
2 x LIC-LOCK locking mechanisms	50 000 6170
2 x COLT/TELENET locking mechanisms	50 000 6180
Sealing plug for locking mechanism, black	70 046 0716
Paveable steel cover, D 400, 1-piece ⁴	70 088 2500E
Steel frame	70 088 2520E
For all basic kits	Order number
Top frame, height 140 mm	06 388 0082E
Base plate, height 5 mm	06 388 0054E