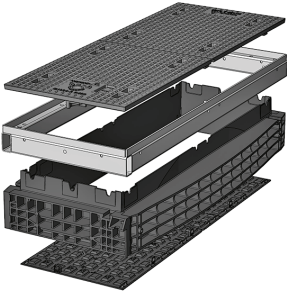


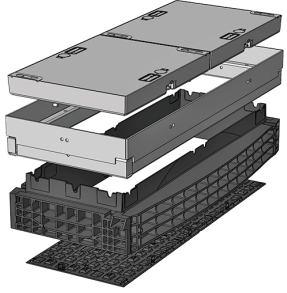


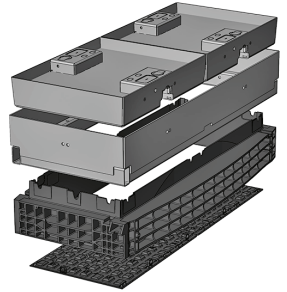
QualityBox PC EK478

Basic kits

Clear dimensions: 400 x 1165 mm
External dimensions: 590 x 1300 mm

Basic kit with cast-iron cover:		Clear height: 139 mm
Test classes according to DIN EN 124	D 400³	
Complete cover	70.0 kg	
Cover	35.0 kg	
Hot-dip galvanised steel frame	23.5 kg	
Top frame (standard height)	16.0 kg	
Base plate	4.0 kg	
Total weight of basic kit	113.5 kg	
Overall height of basic kit	240 mm	

Basic kit with concrete-lined steel cover:			Clear height: 190 mm
Test classes according to DIN EN 124	B 125²	D 400³	
Complete cover	129.0 kg	129.0 kg	
Cover	64.5 kg	64.5 kg	
Hot-dip galvanised steel frame	36.0 kg	36.0 kg	
Top frame (standard height)	16.0 kg	16.0 kg	
Base plate	4.0 kg	4.0 kg	
Total weight of basic kit	185.0 kg	185.0 kg	
Overall height of basic kit	295 mm	295 mm	

Basic kit with paveable steel cover: (paveable height 45 mm)			Clear height: 190 mm
Test classes according to DIN EN 124	B 125²	D 400³	
Complete cover (non-paveable)	140.0 kg	140.0 kg	
Cover (non-paveable)	70.0 kg	70.0 kg	
Hot-dip galvanised steel frame	43.5 kg	43.5 kg	
Top frame (standard height)	16.0 kg	16.0 kg	
Base plate	4.0 kg	4.0 kg	
Total weight of basic kit	203.5 kg	203.5 kg	
Overall height of basic kit	340 mm	340 mm	

Änderungen vorbehalten | Stand 04-2024

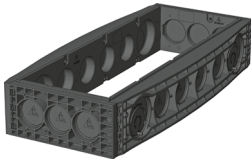


QualityBox PC EK478

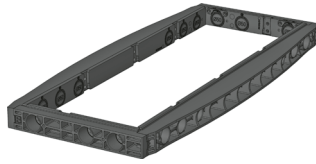
Frame / Vario Module

Clear dimensions: 400 x 1165 mm
External dimensions: 590 x 1300 mm

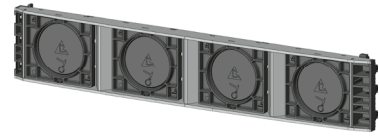
220 mm **70 mm** **Vario Module**



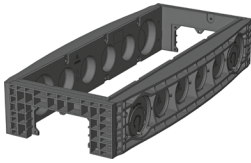
Frame 220 mm
Art. no.: 06 478 0052E
3 x Ø 110
6 x Ø 110 / 2 x Ø 160
Weight: 15.5 kg



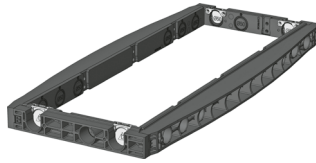
Frame 70 mm
Art. no.: 06 478 0058E
3 x Ø 50
6 x Ø 50
Weight: 8.5 kg



Vario Module
Art. no.: 06 338 0350E
CD1165 4 x 160 mm



Frame 220 mm overbuild
Art. no.: 06 478 0073E
1 x rectangular
6 x Ø 110 / 2 x Ø 160
Weight: 14.5 kg



Frame 70 mm overbuild
Art. no.: 06 478 0358E
2 x overbuild / 1 x Ø 50
6 x Ø 50
Weight: 8.5 kg



Frame 220 mm overbuild
Art. no.: 06 478 0061E
3 x Ø 110
3 x 110 / 2x rectangular
Weight: 17.5 kg



Frame 70 mm overbuild
Art. no.: 06 478 0360E
3 x Ø 50
4 x overbuild / 2 x Ø 50
Weight: 8.5 kg



Frame 220 mm overbuild
Art. no.: 06 478 0056E
3 x 110 / 2x rectangular
1 x rectangular
Weight: 16.0 kg



Frame 70 mm overbuild
Art. no.: 06 478 0359E
2 x overbuild / 1 x Ø 50
4 x overbuild / 2 x Ø 50
Weight: 8.5 kg

Änderungen vorbehalten | Stand 04-2024



QualityBox PC EK478

Order numbers

Clear dimensions: 400 x 1165 mm

External dimensions: 590 x 1300 mm

Manhole with cast-iron cover, lockable⁴	Order number
Basic kit D 400, hex locking mechanism	06 478 1149
Basic kit D 400, hexagon socket locking mechanism	06 478 1213
Basic kit D 400, LIC-LOCK locking mechanism	06 478 1214
Basic kit D 400, COLT/TELENET locking mechanism	06 478 1215
Accessories for cast-iron cover, lockable	
1 x hex locking mechanism	50 000 6020
1 x hexagon socket locking mechanism	50 000 6040
1 x LIC-LOCK locking mechanism	50 000 6060
1 x COLT/TELENET locking mechanism	50 000 6080
Sealing plug for locking mechanism, black	70 046 0716
Cast-iron cover D 400, 2-piece ⁴	70 052 0020E
Steel frame	70 034 5980E
Manhole with concrete-lined steel cover, lockable⁴	Order number
Basic kit B 125, without lock, locks retrofittable	06 478 1093
Basic kit D 400, hex locking mechanism	06 478 1094
Basic kit D 400, hexagon socket locking mechanism	06 478 1095
Basic kit D 400, LIC-LOCK locking mechanism	06 478 1096
Basic kit D 400, COLT/TELENET locking mechanism	06 478 1097
Accessories for concrete-lined steel cover, lockable	
4 x hex locking mechanisms	50 000 6200
4 x hexagon socket locking mechanisms	50 000 7200
4 x LIC-LOCK locking mechanisms	50 000 8200
4 x COLT/TELENET locking mechanisms	50 000 9200
Sealing plug for locking mechanism, black	70 046 0716
Concrete-lined steel cover, B 125, 2-piece	70 040 6775E
Concrete-lined steel cover, D 400, 2-piece ⁴	70 040 6770E
Steel frame	70 039 7080E
Manhole with paveable steel cover, lockable⁴	Order number
Basic kit B 125, without lock, locks retrofittable	06 478 1034
Basic kit D 400, without lock, locks retrofittable	06 478 1216
Accessories for paveable steel cover, lockable	
4 x hex locking mechanisms	50 000 6300
4 x hexagon socket locking mechanisms	50 000 7300
4 x LIC-LOCK locking mechanisms	50 000 8300
4 x COLT/TELENET locking mechanisms	50 000 9300
Sealing plug for locking mechanism, black	70 046 0716
Paveable steel cover, D 400, 2-piece ⁴	70 088 2000E
Steel frame	70 088 2020E
For all basic kits	Order number
Top frame, height 140 mm	06 478 0082E
Base plate, height 5 mm	06 478 0054E