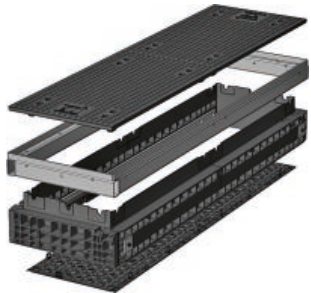


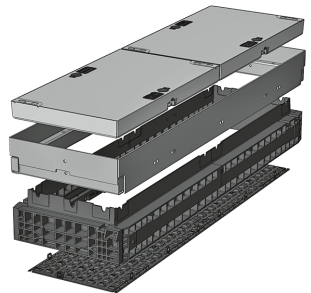


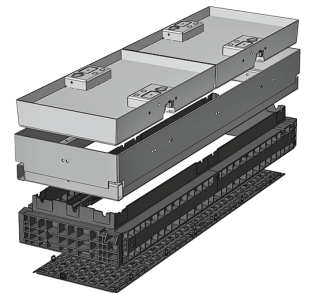
# QualityBox PC EK628

## Basic kits

Clear dimensions: 400 x 1600 mm  
External dimensions: 550 x 1730 mm

Basic kit with <b>cast-iron</b> cover:		Clear height: 190 mm
Test classes according to DIN EN 124	<b>D 400<sup>3</sup></b>	
Complete cover	95.0 kg	
Cover	47.5 kg	
Hot-dip galvanised steel frame	29.5 kg	
Top frame (standard height)	43.5 kg	
Base plate	5.0 kg	
<b>Total weight of basic kit</b>	<b>173.0 kg</b>	
<b>Overall height of basic kit</b>	<b>240 mm</b>	

Basic kit with <b>concrete-lined steel</b> cover:			Clear height: 190 mm
Test classes according to DIN EN 124	<b>B 125<sup>2</sup></b>	<b>D 400<sup>3</sup></b>	
Complete cover	173.0 kg	173.0 kg	
Cover	86.5 kg	86.5 kg	
Hot-dip galvanised steel frame	45.0 kg	45.0 kg	
Top frame (standard height)	43.5 kg	43.5 kg	
Base plate	5.0 kg	5.0 kg	
<b>Total weight of basic kit</b>	<b>266.5 kg</b>	<b>266.5 kg</b>	
<b>Overall height of basic kit</b>	<b>295 mm</b>	<b>295 mm</b>	

Basic kit with <b>paveable steel</b> cover: (paveable height 45 mm)			Clear height: 190 mm
Test classes according to DIN EN 124	<b>B 125<sup>2</sup></b>	<b>D 400<sup>3</sup></b>	
Complete cover (non-paveable)	185.0 kg	185.0 kg	
Cover (non-paveable)	92.5 kg	92.5 kg	
Hot-dip galvanised steel frame	56.0 kg	56.0 kg	
Top frame (standard height)	43.5 kg	43.5 kg	
Base plate	5.0 kg	5.0 kg	
<b>Total weight of basic kit</b>	<b>289.5 kg</b>	<b>289.5 kg</b>	
<b>Overall height of basic kit</b>	<b>340 mm</b>	<b>340 mm</b>	

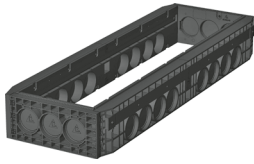


# QualityBox PC EK628

Frame / Vario Module

Clear dimensions: 400 x 1600 mm  
External dimensions: 550 x 1730 mm

220 mm	70 mm	Vario Module
--------	-------	--------------



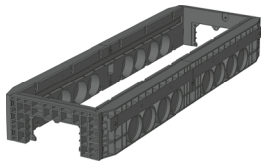
**Frame 220 mm**  
Art. no.: 06 628 0052E  
3 x Ø 110  
8 x Ø 110  
Weight: 52.0 kg



**Frame 70 mm**  
Art. no.: 06 628 0058E  
3 x Ø 50  
Weight: 18.5 kg



**Vario Module**  
Art. no.: 06 618 0350E  
CD1600 6 x 160 mm



**Frame 220 mm overbuild**  
Art. no.: 06 628 0076E  
1 x rectangular  
8 x Ø 110  
Weight: 50.5 kg



**Frame 70 mm overbuild**  
Art. no.: 06 628 0358E  
2 x overbuild / 1 x Ø 50  
Weight: 18.0 kg



**Frame 220 mm overbuild**  
Art. no.: 06 628 0074E  
3 x Ø 110  
4 x rectangular  
Weight: 46.0 kg



**Frame 220 mm overbuild**  
Art. no.: 06 628 0073E  
1 x rectangular  
4 x rectangular  
Weight: 45.0 kg

Änderungen vorbehalten | Stand 04-2024



## QualityBox PC EK628

### Order numbers

Clear dimensions: 400 x 1600 mm

External dimensions: 550 x 1730 mm

<b>Manhole with cast-iron cover, lockable <sup>4</sup></b>	<b>Order number</b>
Basic kit D 400, hex locking mechanism	06 628 1204
Basic kit D 400, hexagon socket locking mechanism	06 628 1205
Basic kit D 400, LIC-LOCK locking mechanism	06 628 1206
Basic kit D 400, COLT/TELENET locking mechanism	06 628 1207
<b>Accessories for cast-iron cover, lockable</b>	
1 x hex locking mechanism	50 000 6020
1 x hexagon socket locking mechanism	50 000 6040
1 x LIC-LOCK locking mechanism	50 000 6060
1 x COLT/TELENET locking mechanism	50 000 6080
Sealing plug for locking mechanism, black	70 046 0716
Cast-iron cover D 400, 2-piece <sup>4</sup>	70 078 7150E
Steel frame	70 040 9704E
<b>Manhole with concrete-lined steel cover, lockable <sup>4</sup></b>	<b>Order number</b>
Basic kit B 125, without lock, locks retrofittable	06 628 1029
Basic kit D 400, hex locking mechanism	06 628 1030
Basic kit D 400, hexagon socket locking mechanism	06 628 1031
Basic kit D 400, LIC-LOCK locking mechanism	06 628 1032
Basic kit D 400, COLT/TELENET locking mechanism	06 628 1033
<b>Accessories for concrete-lined steel cover, lockable</b>	
4 x hex locking mechanisms	50 000 6200
4 x hexagon socket locking mechanisms	50 000 7200
4 x LIC-LOCK locking mechanisms	50 000 8200
4 x COLT/TELENET locking mechanisms	50 000 9200
Sealing plug for locking mechanism, black	70 046 0716
Concrete-lined steel cover, B 125, 2-piece	70 046 1275E
Concrete-lined steel cover, D 400, 2-piece <sup>4</sup>	70 046 1270E
Steel frame	70 046 0705E
<b>Manhole with paveable steel cover, lockable <sup>4</sup></b>	<b>Order number</b>
Basic kit B 125, without lock, locks retrofittable	06 628 1049
Basic kit D 400, without lock, locks retrofittable	06 628 1050
<b>Accessories for paveable steel cover, lockable</b>	
4 x hex locking mechanisms	50 000 6300
4 x hexagon socket locking mechanisms	50 000 7300
4 x LIC-LOCK locking mechanisms	50 000 8300
4 x COLT/TELENET locking mechanisms	50 000 9300
Sealing plug for locking mechanism, black	70 046 0716
Paveable steel cover, D 400, 2-section <sup>4</sup>	70 088 2100E
Steel frame	70 088 2120E
<b>For all basic kits</b>	<b>Order number</b>
Top frame, height 140 mm	06 628 0082E
Base plate, height 5 mm	06 628 0054E