

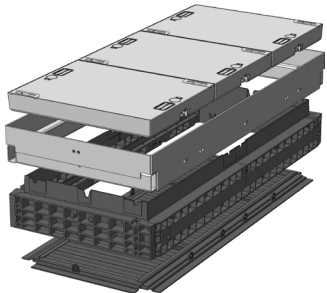


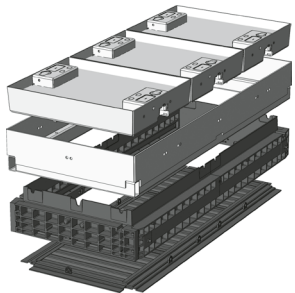
## QualityBox PC EK648

Basic kits

Clear dimensions: 550 x 1400 mm

External dimensions: 720 x 1540 mm

Basic kit with <b>concrete-lined steel</b> cover:			Clear height: 190 mm
Test classes according to DIN EN 124	<b>B 125<sup>2</sup></b>	<b>D 400<sup>3</sup></b>	
Complete cover	199.5 kg	199.5 kg	
Cover	66.5 kg	66.5 kg	
Hot-dip galvanised steel frame	44.5 kg	44.5 kg	
Top frame (standard height)	29.0 kg	29.0 kg	
Base plate	6.0 kg	6.0 kg	
<b>Total weight of basic kit</b>	<b>279.0 kg</b>	<b>279.0 kg</b>	
<b>Overall height of basic kit</b>	<b>295 mm</b>	<b>295 mm</b>	

Basic kit with <b>paveable steel</b> cover: (paveable height 45 mm)			Clear height: 190 mm
Test classes according to DIN EN 124	<b>B 125<sup>2</sup></b>	<b>D 400<sup>3</sup></b>	
Complete cover (non-paveable)	217.0 kg	217.0 kg	
Cover (non-paveable)	72.5 kg	72.5 kg	
Hot-dip galvanised steel frame	53.5 kg	53.5 kg	
Top frame (standard height)	29.0 kg	29.0 kg	
Base plate	6.0 kg	6.0 kg	
<b>Total weight of basic kit</b>	<b>305.5 kg</b>	<b>305.5 kg</b>	
<b>Overall height of basic kit</b>	<b>355 mm</b>	<b>355 mm</b>	

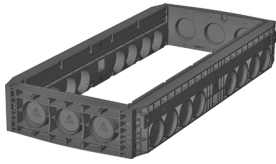


# QualityBox PC EK648

Frames / Vario Modules

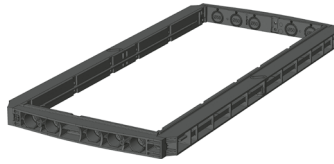
Clear dimensions: 550 x 1400 mm  
External dimensions: 720 x 1540 mm

**220 mm**                      **70 mm**                      **Vario Module**



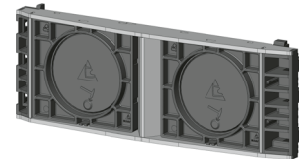
**Frame 220 mm**  
Art. no.: 06 648 0052E  
3 x Ø 110 / 8 x Ø 110

Weight: 41.5 kg

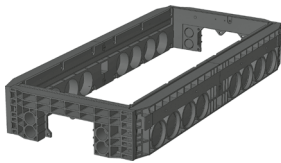


**Frame 70 mm**  
Art. no.: 06 648 0058E  
5 x Ø 50

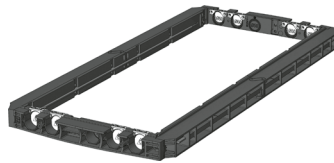
Weight: 18.5 kg



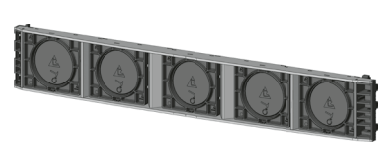
**Vario Module**  
Art. no.: 06 278 0351E  
CD550 2 x 160 mm



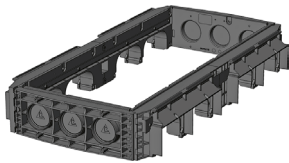
**Frame 220 mm overbuild**  
Art. no.: 06 648 0076E  
4 x Ø 50 / 1 x rectangular  
8 x Ø 110  
Weight: 42.0 kg



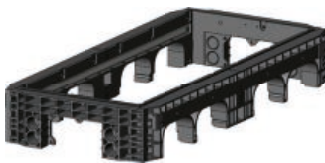
**Frame 70 mm overbuild**  
Art. no.: 06 648 0358E  
4 x overbuild / 1 x Ø 50  
Weight: 18.0 kg



**Vario Module**  
Art. no.: 06 578 0350E  
CD1400 5 x 160 mm



**Frame 220 mm overbuild**  
Art. no.: 06 648 0085E  
3 x Ø 110  
4 x rectangular  
Weight: 36.0 kg



**Frame 220 mm overbuild**  
Art. no.: 06 648 0073E  
4 x Ø 50 / 1 x rectangular  
4 x rectangular  
Weight: 36.0 kg

Änderungen vorbehalten | Stand 04-2024



## QualityBox PC EK648

### Order numbers

Clear dimensions: 550 x 1400 mm

External dimensions: 720 x 1540 mm

<b>Manhole with concrete-lined steel cover, lockable <sup>4</sup></b>	<b>Order number</b>
Basic kit B 125, without lock, locks retrofittable	06 648 1003
Basic kit D 400, hex locking mechanism	06 648 1004
Basic kit D 400, hexagon socket locking mechanism	06 648 1005
Basic kit D 400, LIC-LOCK locking mechanism	06 648 1006
Basic kit D 400, COLT/TELENET locking mechanism	06 648 1007
<b>Accessories for concrete cover, lockable</b>	
6 x hex locking mechanisms	50 000 6400
6 x hexagon socket locking mechanisms	50 000 7400
6 x LIC-LOCK locking mechanisms	50 000 8400
6 x COLT/TELENET locking mechanisms	50 000 9400
Sealing plug for locking mechanism, black	70 046 0716
Concrete-lined steel cover, B 125, 3-piece	70 045 6575E
Concrete-lined steel cover, D 400, 3-piece <sup>4</sup>	70 045 6570E
Steel frame	70 041 9980E
<b>Manhole with paveable steel cover, lockable <sup>4</sup></b>	<b>Order number</b>
Basic kit B 125, without lock, locks retrofittable	06 648 1011
Basic kit D 400, without lock, locks retrofittable	06 648 1021
<b>Accessories for paveable steel cover, lockable</b>	
6 x hex locking mechanisms	50 000 6500
6 x hexagon socket locking mechanisms	50 000 7500
6 x LIC-LOCK locking mechanisms	50 000 8500
6 x COLT/TELENET locking mechanisms	50 000 9500
Sealing plug for locking mechanism, black	70 046 0716
Paveable steel cover, D 400, 3-piece <sup>4</sup>	70 088 2400E
Steel frame	70 088 2420E
<b>For all basic kits</b>	<b>Order number</b>
Top frame, height 140 mm	06 648 0082E
Base plate, height 5 mm	06 648 0054E