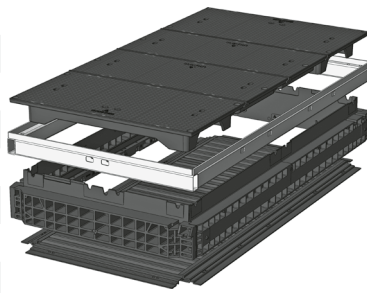


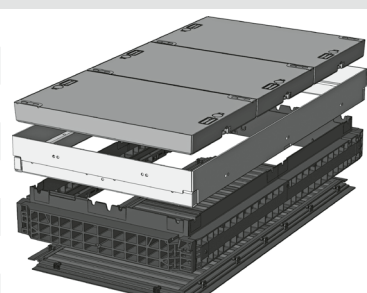


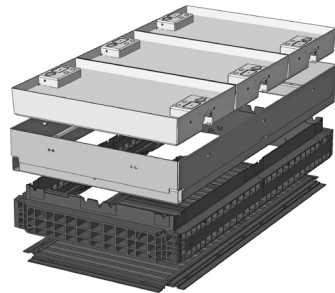
QualityBox PC EK708

Basic kits

Clear dimensions: 800 x 1600 mm
External dimensions: 960 x 1760 mm

Basic kit with cast-iron cover:		Clear height: 100 mm
Test classes according to DIN EN 124	B 125²	
Complete cover	216.0 kg	
Cover	54.0 kg	
Hot-dip galvanised steel frame	34.5 kg	
Top frame (standard height)	51.0 kg	
Base plate	10.0 kg	
Total weight of basic kit	311.5 kg	
Overall height of basic kit	240 mm	

Basic kit with concrete-lined steel cover:			Clear height: 190 mm
Test classes according to DIN EN 124	B 125²	D 400³	
Complete cover	381.0 kg	381.0 kg	
Cover	127.0 kg	127.0 kg	
Hot-dip galvanised steel frame	56.0 kg	56.0 kg	
Top frame (standard height)	51.0 kg	51.0 kg	
Base plate	10.0 kg	10.0 kg	
Total weight of basic kit	498.0 kg	498.0 kg	
Overall height of basic kit	310 mm	310 mm	

Basic kit with paveable steel cover: (paveable height 45 mm)			Clear height: 190 mm
Test classes according to DIN EN 124	B 125²	D 400³	
Complete cover (non-paveable)	399.0 kg	399.0 kg	
Cover (non-paveable)	133.0 kg	133.0 kg	
Hot-dip galvanised steel frame	68.5 kg	68.5 kg	
Top frame (standard height)	51.0 kg	51.0 kg	
Base plate	10.0 kg	10.0 kg	
Total weight of basic kit	528.5 kg	528.5 kg	
Overall height of basic kit	355 mm	355 mm	

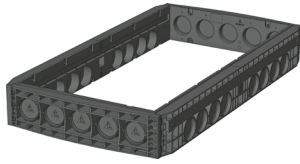


QualityBox PC EK708

Frames / Vario Modules

Clear dimensions: 800 x 1600 mm
External dimensions: 960 x 1760 mm

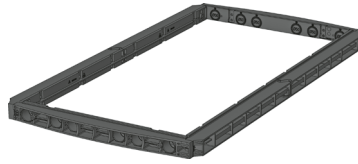
220 mm **70 mm** **Vario Module**



Frame 220 mm

Art. no.: 06 708 0052E
5 x Ø 110 / 8 x Ø 110

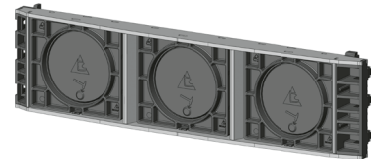
Weight: 58.0 kg



Frame 70 mm

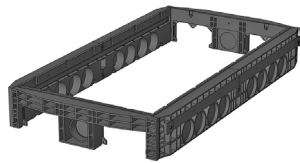
Art. no.: 06 708 0058E
6 x Ø 50

Weight: 20.5 kg



Vario Module

Art. no.: 06 328 0350E
CD800 3 x 160 mm



Frame 220 mm overbuild

Art. no.: 06 708 0061E
2 x rectangular / 1 x Ø 110
8 x Ø 110

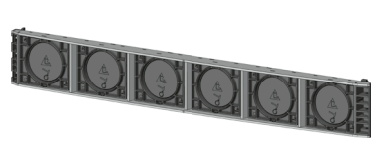
Weight: 57.5 kg



Frame 70 mm overbuild

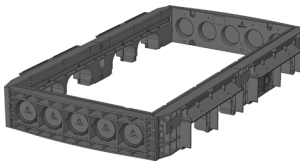
Art. no.: 06 708 0358E
4 x overbuild / 2 x Ø 50

Weight: 20.5 kg



Vario Module

Art. no.: 06 618 0350E
CD1600 6 x 160 mm

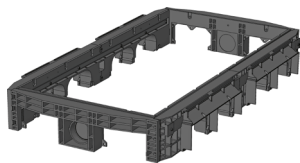


Frame 220 mm overbuild

Art. no.: 06 708 0085E
5 x Ø 110

4 x rectangular

Weight: 52.0 kg



Frame 220 mm overbuild

Art. no.: 06 708 0086E
2 x rectangular / 1 x Ø 110

4 x rectangular

Weight: 52.0 kg

**QualityBox PC EK708**

Order numbers

Clear dimensions: 800 x 1600 mm

External dimensions: 960 x 1760 mm

Manhole with cast-iron cover, screwed down	Order number
Basic kit B 125, not screwed, screw connection retrofittable	06 708 1075
Accessories for cast-iron cover, screwed down	
12 x hex screw connections	50 000 5600
12 x hexagon socket screw connections	50 000 5610
12 x LIC-LOCK screw connections	50 000 5700
12 x COLT/TELENET screw connections	50 000 5710
Sealing plug for screw connection, black	70 043 0300
Cast-iron cover B 125, 4-piece, with joint bars	70 044 6700E
Steel frame	70 044 7300E
Manhole with concrete-lined steel cover, lockable ⁴	
Order number	
Basic kit B 125, without lock, locks retrofittable	06 708 1003
Basic kit D 400, hex locking mechanism	06 708 1066
Basic kit D 400, hexagon socket locking mechanism	06 708 1067
Basic kit D 400, LIC-LOCK locking mechanism	06 708 1068
Basic kit D 400, COLT/TELENET locking mechanism	06 708 1069
Accessories for concrete-lined steel cover, lockable	
6 x hex locking mechanisms	50 000 6500
6 x hexagon socket locking mechanisms	50 000 7500
6 x LIC-LOCK locking mechanisms	50 000 8500
6 x COLT/TELENET locking mechanisms	50 000 9500
Sealing plug for locking mechanism, black	70 046 0716
Concrete-lined steel cover, B 125, 3-piece	70 046 0275E
Concrete-lined steel cover, D 400, 3-piece ⁴	70 046 0270E
Steel frame	70 042 0680E
Manhole with paveable steel cover, lockable ⁴	
Order number	
Basic kit B 125, without lock, locks retrofittable	06 708 1004
Basic kit D 400, without lock, locks retrofittable	06 708 1077
Accessories for paveable steel cover, lockable	
6 x hex locking mechanisms	50 000 6500
6 x hexagon socket locking mechanisms	50 000 7500
6 x LIC-LOCK locking mechanisms	50 000 8500
6 x COLT/TELENET locking mechanisms	50 000 9500
Sealing plug for locking mechanism, black	70 046 0716
Paveable steel cover, D 400, 3-piece ⁴	70 088 2900E
Steel frame	70 088 2920E
For all basic kits	
Order number	
Top frame, height 140 mm	06 708 0082E
Base plate, height 5 mm	06 708 0054E