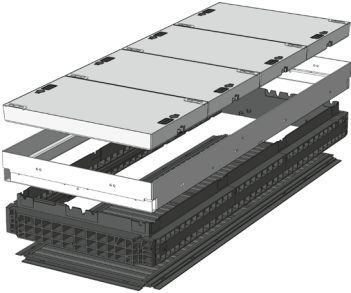




QualityBox PC EK748

Basic kit

Clear dimensions: 800 x 2200 mm
External dimensions: 960 x 2360 mm

Basic kit with concrete-lined steel cover:			Clear height: 195 mm
Test classes according to DIN EN 124	B 125²	D 400³	
Complete cover	520.0 kg	520.0 kg	
Cover	130.0 kg	130.0 kg	
Hot-dip galvanised steel frame	69.5 kg	69.5 kg	
Top frame (standard height)	52.0 kg	52.0 kg	
Base plate	13.5 kg	13.5 kg	
Total weight of basic kit	655.0 kg	655.0 kg	
Overall height of basic kit	310 mm	310 mm	



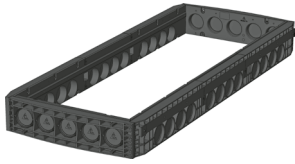
QualityBox PC EK748

Frame / Vario Module

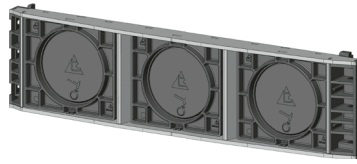
Clear dimensions: 800 x 2200 mm
External dimensions: 960 x 2360 mm

220 mm

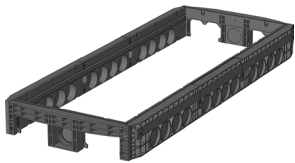
Vario Module



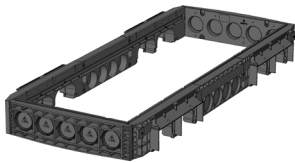
Frame 220 mm
Art. no.: 06 748 0052E
5 x Ø 110
12 x Ø 110
Weight: 78.0 kg



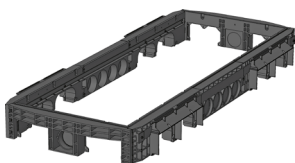
Vario Module
Art. no.: 06 328 0350E
CD800 3 x 160 mm



Frame 220 mm overbuild
Art. no.: 06 748 0061E
2 x rectangular / 1 x Ø 110
12 x Ø 110
Weight: 78.0 kg



Frame 220 mm overbuild
Art. no.: 06 748 0085E
5 x Ø 110
4 x rectangular / 4 x Ø 110
Weight: 77.0 kg



Frame 220 mm overbuild
Art. no.: 06 748 0084E
2 x rectangular / 1 x Ø 110
4 x rectangular / 4 x Ø 110
Weight: 77.0 kg



QualityBox PC EK748

Order numbers

Clear dimensions: 800 x 2200 mm

External dimensions: 960 x 2360 mm

Manhole with concrete-lined steel cover, lockable ⁴	Order number
Basic kit B 125, without lock, locks retrofittable	06 748 1000
Basic kit D 400, hex locking mechanism	06 748 1001
Basic kit D 400, hexagon socket locking mechanism	06 748 1002
Basic kit D 400, LIC-LOCK locking mechanism	06 748 1003
Basic kit D 400, COLT/TELENET locking mechanism	06 748 1004
Accessories for concrete-lined steel cover, lockable	
8 x hex locking mechanisms	50 000 6600
8 x hexagon socket locking mechanisms	50 000 7600
8 x LIC-LOCK locking mechanisms	50 000 8600
8 x COLT/TELENET locking mechanisms	50 000 9600
Sealing plug for locking mechanism, black	70 046 0716
Concrete-lined steel cover, B 125, 4-piece	70 049 7475E
Concrete-lined steel cover, D 400, 4-piece ⁴	70 049 7470E
Steel frame	70 049 6380E
For all basic kits	Order number
Top frame, height 140 mm	06 748 0082E
Base plate, height 5 mm	06 748 0054E