

EK510 connect – Underground distribution systems

Product features – Body

▲ Innovative manhole structure with 3D ribFrame

Modular, resistant, and durable system solution that can be adapted to the specific location

▲ Modular manhole structure

Flexible, adapts to the respective situation, and easy to handle

▲ Modified polycarbonate (PC)

Hard-wearing, certified groundwater compatibility, UV-resistant



Product features – Cover

▲ Submersion hood (swivelling)

Ideal for areas at risk of flooding

▲ Locking mechanism and cable outlet flush with the ground

No risk of tripping; secure cable routing with shear protection

▲ Cover/submersion hood safety catch

Enhanced accident prevention and safe operation of the equipment compartment

▲ Lock accessible only with a special construction key

Protection against unauthorised access – Security

▲ Opening support for cover and submersion hood

Can be operated by non-professionals by means of two stainless steel gas springs. Cover and submersion hood are connected

▲ Step protection/trip guard

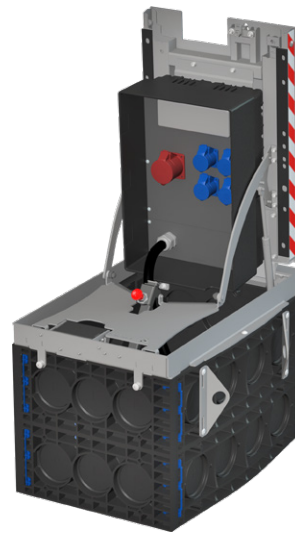
Prevents people from falling in when the cover is open

▲ Positive opening function

Access also when iced over; dirt-resistant

▲ Sockets with electrical circuit-breaker and PRCD

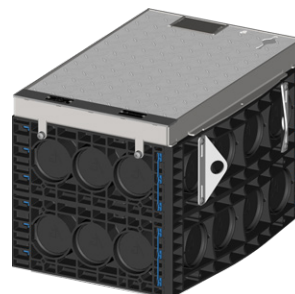
High safety standards and accident prevention in accordance with VDE regulations



▲ EK510 connect – with extension



▲ EK510 connect - submersion hood without extension



▲ EK510 connect - with chequered stud plate cover

Submersion hood extension variants

▲ Socket versions

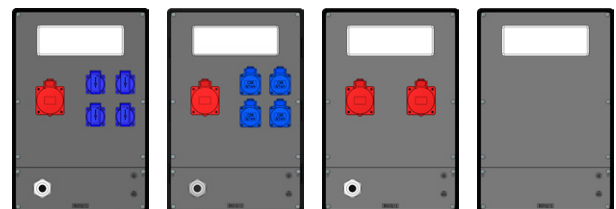
- 16 A/230 V Schuko/16 A/400 V Schuko
- 16 A/400 V CEE/32 A/400 V CEE

▲ Circuit breaker/RCD switch

- Circuit-breaker B-16 A 1-phase
- LS C-16 A/32 A 3-phase
- FI/RCD 63 A Type A

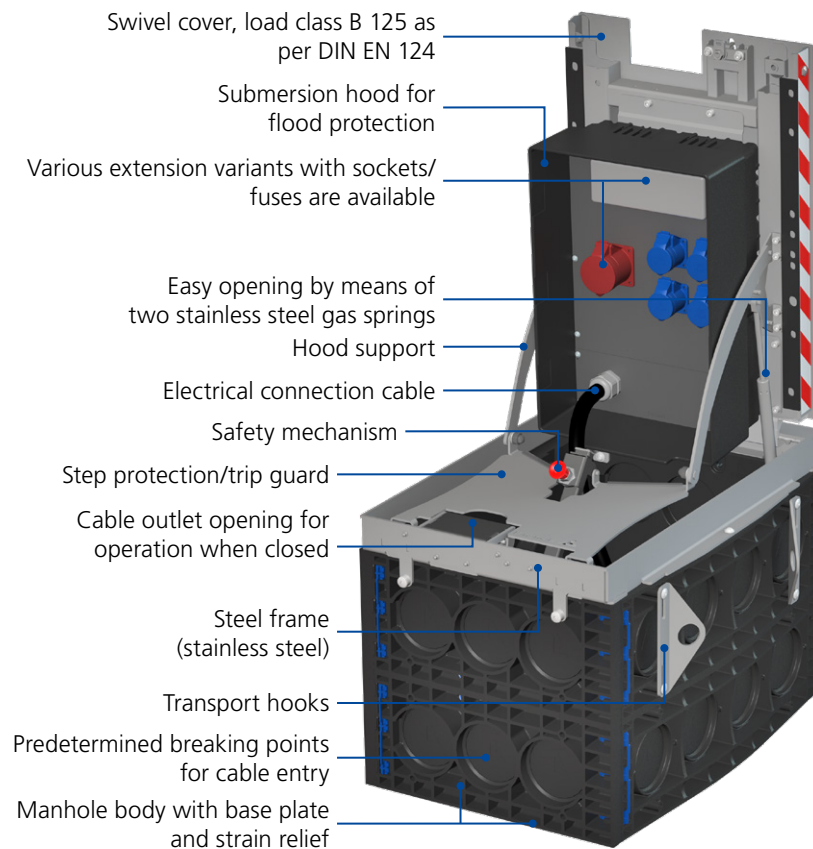
▲ Mounting panel

- Individualised extension options are possible for the submersion hood

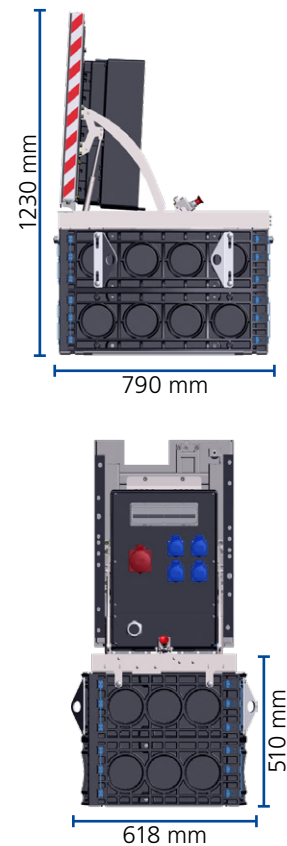


▲ Examples of socket variants

Structure



Dimensions



Technical data

Designation	EK510 connect
Clear dimensions	400 x 650 mm (WxD)
External dimensions	618x790x510mm/opens to 1230 mm (WxLxH)
Total weight	Approx. 75 kg
Cover weight	Approx. 25 kg
Max. load class	B 125 (12.5 tonnes, 125 kN) as per DIN EN 124
Max. protection	63 A
Protection rating	closed: IP48/open: IP 44 (as per DIN EN 60529)
Maximum installation space for submersion hood	339 x 518 x 123 mm (WxLxD), Max. installation depth of electrical components 60 mm with a 1 m water column
Cover material	Cover: Stainless steel (V2A) chequered stud plate look, Steel frame: Stainless steel (V2A)
Submersion hood material	polycarbonate (PC)
Mounting panel material	polycarbonate (PC)
Body material	polycarbonate (PC)