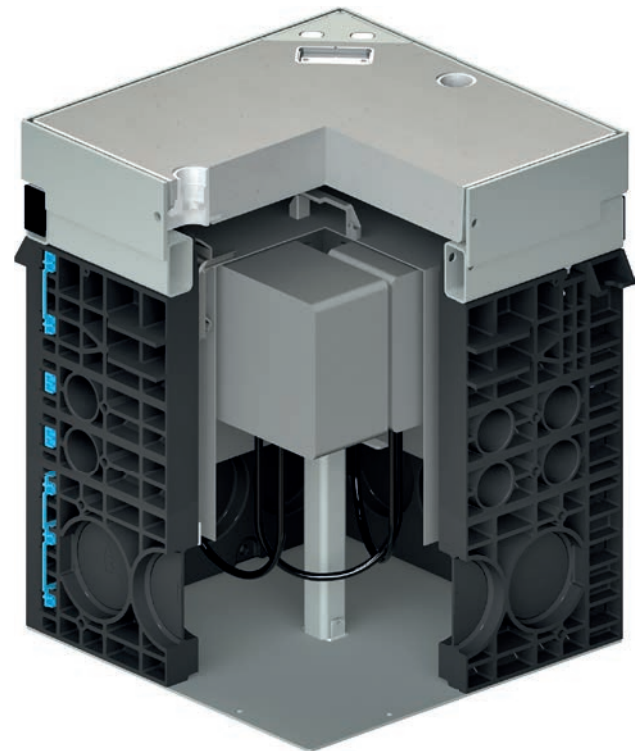


EK601 – Underground distribution system

Product features – Body

- ▲ **Innovative manhole structure with 3D-ribFrame**
Modular, resistant, and durable system solution that can be adapted to the specific location
- ▲ **Modular manhole structure**
Flexible, adapts to the respective situation, and easy to handle
- ▲ **Modified polycarbonate (PC)**
Hard-wearing, certified groundwater compatibility, UV-resistant



▲ EK601 - Cross-sectional model revealing the fixtures

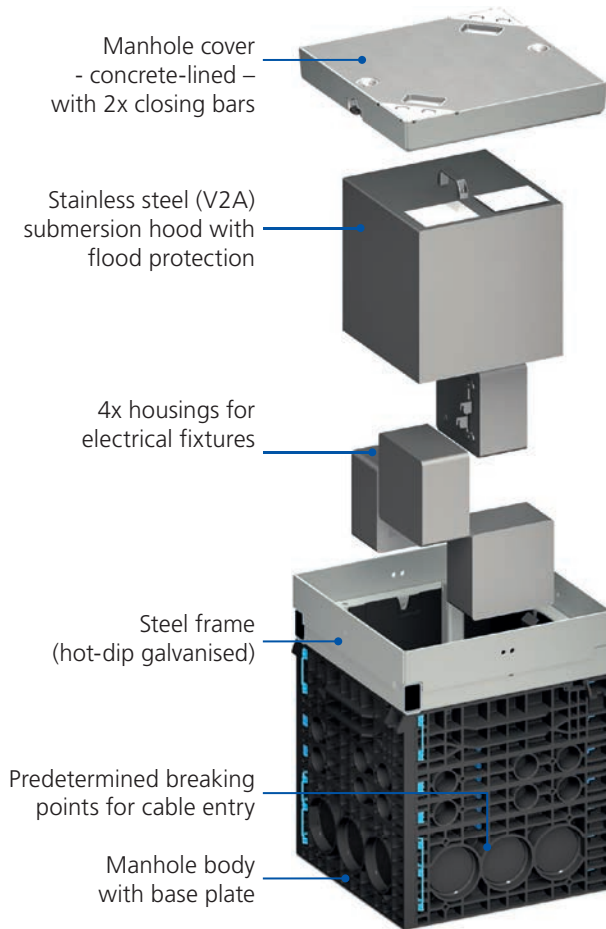
Product features – Cover

- ▲ **Submersion hood (removable)**
Ideal for areas at risk of flooding
- ▲ **Various manhole cover types**
Variable surface material, design and structure can be adapted; blends into the cityscape
- ▲ **Locking mechanism requires a special key**
Protection against unauthorised access – Security
- ▲ **Solid cover**
Cover/lid can be safely removed by mechanical lifting equipment
- ▲ **Opening support for submersion hood**
Ease of opening due to low weight of submersion hood, or using two stainless steel gas springs

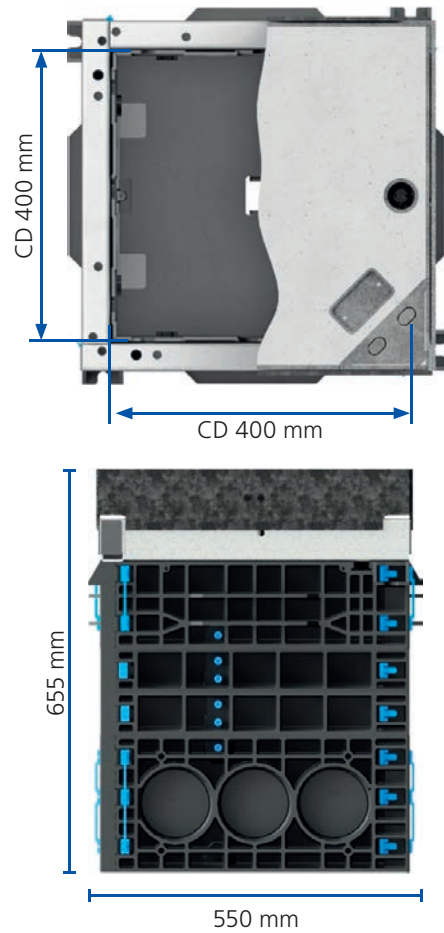
Submersion hood extension variants

- ▲ **Installation housing**
- Individualised extension options are possible in the installation housings (4x)

Structure



Dimensions



Technical data

Designation	EK601
Clear dimensions	400 x 400 mm (WxD)
External dimensions	550 x 550 x 655 mm (WxLxH)
Total weight	Approx. 125 kg
Cover weight	Approx. 55 kg
Max. load class	D 400 (40 tonnes, 400 kN) as per DIN EN 124
Passive heat dissipation	4 x 10 W
Protection rating	closed: IP 58 (as per DIN EN 60529)
Maximum installation space for submersion hood	190 x 190 x 115 mm (WxLxD)
Cover material	Cover: concrete, cast iron Steel frame: steel (hot-dip galvanised)
Submersion hood material	Stainless steel (V2A)
Housing material	polycarbonate (PC)
Body material	polycarbonate (PC)