

# Optical fibre underground distribution system CD 800 x 1400

## Optical fibre underground distribution system

The robustness of the optical fibre underground distribution system and its excellent resistance to extreme environmental influences such as moisture, flooding, dust, vibrations and strong temperature fluctuations make it an extremely reliable solution. Its easy installation and maintenance-friendly folding mechanism offer clear advantages compared to conventional fibre enclosure and splice distributor combinations. In addition, the high flexibility and scalability of the EK881 optical fibre underground distribution system enable various expansion scenarios, making it ideal for the uncomplicated extension and adaptation of optical fibre networks. The design advantages ensure quick and easy access and create more space for additional splice fibre trays.



▲ Optical fibre underground distribution system closed with 3-section concrete cover

### Product features: manhole system

▲ **Innovative manhole design**

Modular, resistant, and durable system solution that can be adapted to the specific location

▲ **Manhole material: modified polycarbonate (PC)**

Hard-wearing, certified groundwater compatibility, UV-resistant

▲ **3-section concrete cover**

Load class D400 according to EN124-4

▲ **Locking mechanism with special key possible**

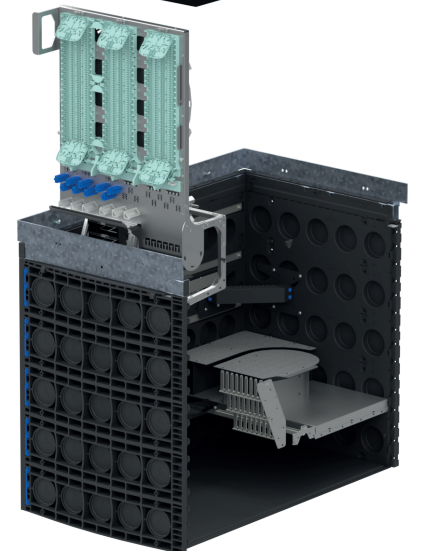
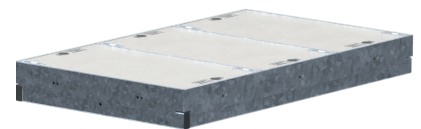
Protection against unauthorised access – Security

▲ **Entry and exit aid**

New entry and exit aid enables easier access and more safety

▲ **Diving-bell cabinet**

Diving-bell cabinet protects the optical fibre installation kit against water ingress



▲ Optical fibre underground distribution system with concrete cover and diving-bell cabinet removed with optical fibre installation kit swung out

### Product features: optical fibre installation kit

▲ **Swivel frame with safety catch**

Installation area can be opened for easy handling and secure locking in position

▲ **Optimised micro-duct pipe and cable routing in the manhole**

Optimised for compliance with the minimum bending radii and for protection of the pipes/cables

▲ **Tread area for installation**

Tread area with non-slip surface for safe work in the manhole

▲ **Combined fibre enclosure and fibre distribution cabinet function**

Function of a fibre enclosure and fibre distribution cabinet combined in one optical fibre installation kit

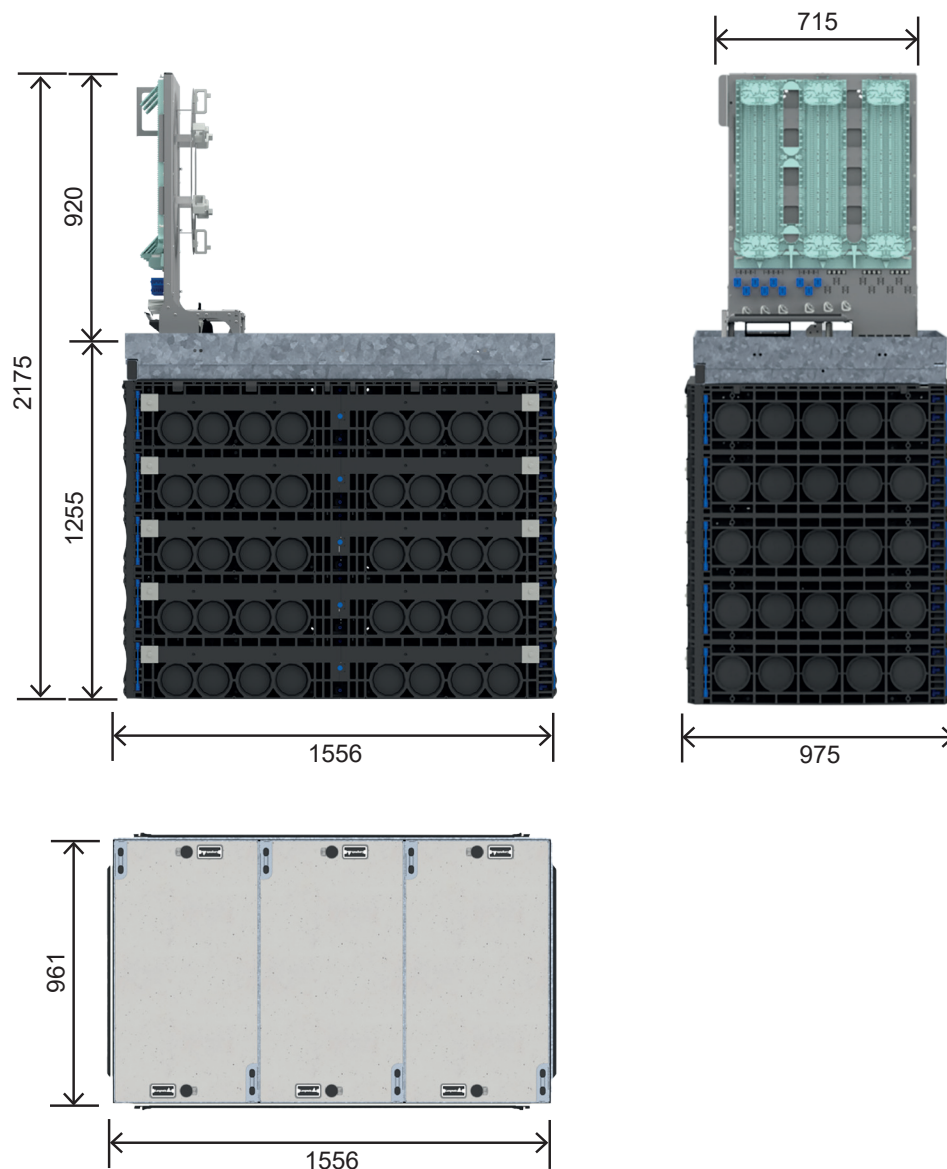
▲ **Excess cable tray**

Large excess cable tray on the rear of the installation kit

## Technical data

<b>Designation</b>	Optical fibre underground distribution system CD 800 x 1400
<b>Clear dimensions</b>	800 x 1400 mm (W x D)
<b>Overall external dimensions</b>	975 x 1556 x 1255 mm (W x L x H)
<b>Height above soil with opened cover</b>	approx. 920 mmv
<b>Total weight</b>	Approx. 700 kg
<b>Weight of 3-section cover</b>	Approx. 340 kg
<b>Max. load class</b>	D400 (40 tonnes, 400 kN) as per DIN EN 124
<b>Protection rating</b>	Closed: IP47
<b>Cover material</b>	Concrete
<b>Diving-bell cabinet material</b>	Aluminium
<b>Body material</b>	Polycarbonate (PC)

## External dimensions of manhole system (mm)

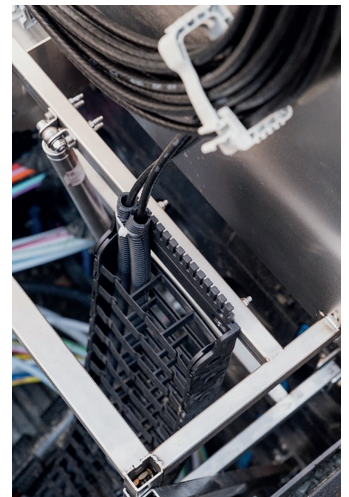


## Technical data – Optical fibre installation kit

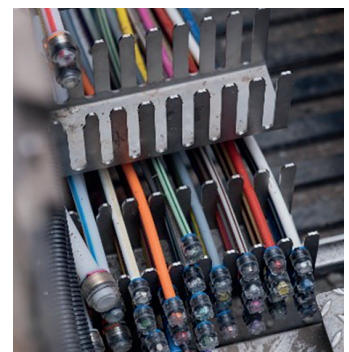
- ▲ Access area:
  - Inlet with fixing and organiser for micro-duct pipes/  
main cables up to 9 x Ø 20 mm
  - Inlet and/or outlet for micro-duct pipes up to 168 x Ø 7 mm or  
120 x Ø 10 mm
  - Optimised cable routing throughout, from entry port, sealing  
and strain relief to the splice section
  - Strain relief for the strength members
  - Use of conventional micro-duct gas stops possible
- ▲ Excess cable tray
  - Excess cable tray for inlet and outlet cables
- ▲ Fibre enclosure optical fibre installation kit:
  - Sealing of the inlet cables per gel fibre enclosures  
(important for maintaining the diving bell principle)
  - Mounting panels equipped with organiser modules to hold  
E&MMS fibre tray system
  - Fibre tray slots for up to 72 shrink-splice fibre trays (5 mm)
  - Simple configuration of the splice fibre trays, tool-free  
replacement possible
  - Protective cover for the splice fibre tray area
- ▲ Fibre distribution cabinet optical fibre installation kit:
  - Micro-cable organisation for Ø 2.5 mm – 4 mm
  - Mounting panels equipped with organiser modules to hold  
E&MMS fibre tray system
  - Fibre tray slots for up to 144 shrink-splice fibre trays (5 mm)
  - Simple configuration of the splice fibre trays, tool-free replacement possible
  - Protective cover for the splice fibre tray area
- ▲ Accessories:
  - E&MMS shrink-splice fibre trays
  - Gel fibre enclosures (housing for longitudinal water protection)



▲ Optical fibre underground distribution system with fibre management system folded open



▲ Optical fibre underground distribution system with energy chain for cable routing



▲ Optical fibre underground distribution system with inlet and outlet area