

Radio ripple control receiver EK 593

Performance features

- Attachment per pole installation
- Sturdy 3-point attachment
 - > If one catch breaks away, two additional ones ensure secure hold.
 - Or optionally with top hat rail per adaptation
- RRCR can be equipped with up to 3 mechanical relays (25 or 40 A)
- Assembly possibility on fuse boxes, e.g. EK 580



Advantages

Mature technology

Langmatz has delivered more than 750.00 radio ripple control receivers in the last 15 years.

Lighting control

The power costs of street lighting can be optimised with the exact switching times, adapted to local circumstances.

Tariff switching for special contract customers

With the radio ripple control, you can also reach your customers in other network areas.

Load management

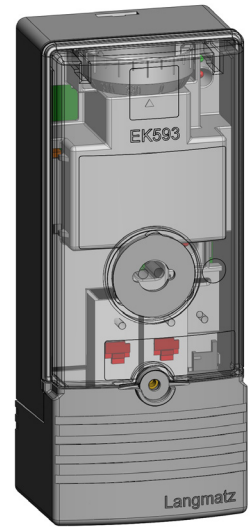
You can control the dispositive load management simply with the control program stored in the receiver and the possibility of changing it by radio command actively and precisely to the second.

Special switching

The radio ripple control can be individually programmed and implemented without any problems.

Technical data | Radio ripple control receiver

Designation	Radio ripple control receiver (RRCR) EK 593
Design	with integrated antenna and radio receiver
Housing colour	Grey, similar to RAL 7035
Protective class	II (double insulated)
Degree of protection	IP51
Mounting	3-point attachment or top hat rail per adaptation (optional)
Operating temperature	-20 to +60° Celsius
Radio transmission format	DIN 19244 FT 1.2
Decoding format	LIC-Versacom compatible with DIN 43861-2-3 or Semagyr Top compatible with DIN 43861-3-2
Parametrisation set	pre-parametrised or non-parametrised according to customer request
Parametrisation interface	optical according to IEC 1107
Interference resistance	EN 61037, EN 61000-4-2, -4-3, -4-4, 4-5, -4-8, -4-11, EN 50204
Emitted interference	EN 55022, EN 55014-1
Reception display	per LED, red and green on receiver
State display	per operating LED
Operational voltage	230 or 115 V AC
Energy input	max. 2.5 V A
Connection cross-section	max. 6 mm ² per relay output
Configuration	2 plug-in relays with 25 A switching capability each, optionally 40 A
Switching voltage	250 V / 50 Hz
Switching current	25 A per relay
Plug-in adaptation optional	Linear and offset according to DIN 43861



Material:	Polycarbonate
Colour:	Grey, similar to RAL 7035
Degree of protection::	IP52
Protection class:	II (double insulated)
Dimensions:	Height: 196 mm Width: 82 mm Depth: 63 mm
Lock:	Either lead-sealable (without screw) or with a Phillips screw

