

Power Supply Unit

SVE 6 Z 259R

Compact and Individual

The power supply unit SVE 6 Z 259R is a quality Langmatz product combining innovation with tried and tested features. The power supply unit has already been successfully used for many years in the telecommunication area. With its compact design, the power supply unit is a solution for almost every requirement, including special applications.

Advantages

Flexibility (customisable)

- Application is possible in almost all housings, such as energy terminal interface pillars, multifunction housings (MFG) etc.
- Modular design
- High-quality, recyclable polycarbonate
- Extendible (up to maximum 4 multifunction housings)

Easy Handling and Installation

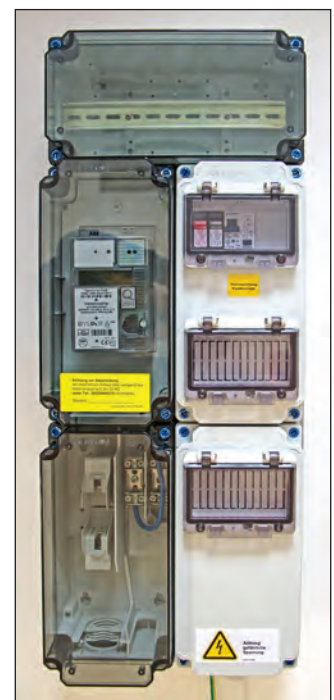
- Low net weight for easy handling during installation and transport
- Low assembly effort, pre-wired, only inlet and outlet must be connected.

Compact design

- One-phase service connection box, approved by all utility companies (parking bay for 2 cores) up to 4.6 KVA
- Meter housing for accommodating an eHz (according to VDE 4102/5.3)
- Additional empty housing for later installation of meter-related applications
- Emergency power feed possible

Quality

- Durable and resistant
- Innovative design features
- Plastic parts made from high-quality polycarbonate (PC)
- Tested according to VDE0660 Part 500



Power Supply Unit
SVE 6 Z 259R

Technical Data

Designation:	SVE 6 Z 259R
Degree of protection:	IP 54
Protection class, housing:	II
Voltage:	230 V
Nominal current load:	25 A
Maximum current load:	63 A
Dimensions, mounting plate:	approx. 340 x 770 mm; max. depth 165 mm; Module housing 150 x 300 mm
Service connection box, max. clamping cable cross-section:	Cu 6-70 mm ² rm, re, se, re and Al 10-70 mm ² rm, re, se, re
Meter housing:	Prepared for eHZ according to VDE 4102/5.3
Circuit breaker housing, 2 rows, with hinged window (2x6TU):	1 x overvoltage protection 1 x combined RCD - LSS 25 A, 10 kA 2-pole 30 mA, short time-delayed 1 x series terminal for extension kit
Series outlet terminal housing, 2 rows, with hinged window (1x6TU):	Series terminals for outlets

Extension kit

SVE/EW-Z-RCD-LSS:	1 x RCD/LSS 25 A/0.03 A (short time-delayed) 1 x terminal set 1 x cable set
SVE/EW-Z-NEA 16:	1 x switch 63 A 1 x connection cable 1 x CEED connector 16 A 1 x cable set 1 x mounting kit
SVE/EW-Z-NEA 32:	1 x switch 63 A 1 x connection cable 1 x CEE connector 32 A 1 x cable set 1 x mounting kit



Example application:
Power Supply Unit
SVE 6 Z 259R
installed in the
energy terminal interface pillar
EK 430