



QualityBox PC EK278 Basic kits

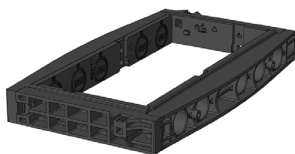
Internal dimensions: 250 x 550 mm
Outer dimensions: 400 x 695 mm

Basic kit with cast-iron cover:			Clearance height: 161 mm
Test classes according to DIN EN 124	B 125²	D 400³	
Cover	29.0 kg	32.0 kg	
Hot-dip galvanised steel frame	19.0 kg	19.0 kg	
Top frame (standard height)	8.0 kg	8.0 kg	
Base plate	2.0 kg	2.0 kg	
Total weight of basic kit	58.0 kg	61.0 kg	
Overall height of basic kit	240 mm	240 mm	

Basic kit with concrete-lined steel cover:			Clearance height: 210 mm
Test classes according to DIN EN 124	B 125²	D 400³	
Cover	45.0 kg	45.0 kg	
Hot-dip galvanised steel frame	25.0 kg	25.0 kg	
Top frame (standard height)	8.0 kg	8.0 kg	
Base plate	2.0 kg	2.0 kg	
Total weight of basic kit	80.0 kg	80.0 kg	
Overall height of basic kit	295 mm	295 mm	

Basic kit with paveable steel cover: (paveable height 45 mm)			Clearance height: 210 mm
Test classes according to DIN EN 124	B 125²	D 400³	
Cover (without paving)	51.0 kg	51.0 kg	
Hot-dip galvanised steel frame	29.0 kg	29.0 kg	
Top frame (standard height)	8.0 kg	8.0 kg	
Base plate	2.0 kg	2.0 kg	
Total weight of basic kit	90.0 kg	90.0 kg	
Overall height of basic kit	340 mm	340 mm	

Frame

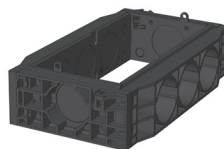


Frame 70 mm

Art. no.: 06 278 0058E

5 x Ø 50

Weight: 4 kg



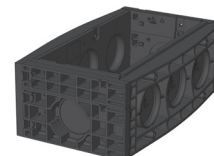
Frame 150 mm

Art. no.: 06 278 0052E

2 x Ø 30 / 1 x Ø 110

4 x Ø 30 / 3 x Ø 110

Weight: 7 kg



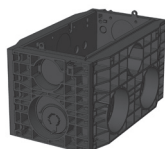
Frame 220 mm

Art. no.: 06 278 0053E

2 x Ø 30 / 1 x Ø 110

3 x Ø 110

Weight: 11 kg



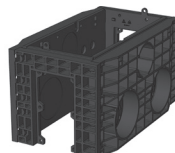
Frame 350 mm

Art. no.: 06 278 0059E

4 x Ø 30 / 1 x Ø 110 / 1 x Ø 160

6 x Ø 30 / 3 x Ø 110 / 2 x Ø 160

Weight: 15.5 kg



Frame 350 mm

Art. no.: 06 278 0089E

1 x rectangular

6 x Ø 30 / 3 x Ø 110 / 2 x Ø 160

Weight: 13.5 kg



QualityBox PC EK278 Order numbers

Internal dimensions: 250 x 550 mm

Outer dimensions: 400 x 695 mm

Manhole with cast-iron cover, lockable ⁴	Order number
Basic kit B 125, not locked, locks retrofittable	06 278 2337
Basic kit D 400, hex locking mechanism	06 278 2343
Basic kit D 400, hex socket locking mechanism	06 278 2344
Basic kit D 400, LIC-lock locking mechanism	06 278 2345
Basic kit D 400, COLT/TELENET locking mechanism	06 278 2346
Accessories for cast-iron cover, lockable	
1 x hex locking mechanism	50 000 6020
1 x hex socket locking mechanism	50 000 6040
1 x LIC-lock locking mechanism	50 000 6060
1 x COLT/TELENET locking mechanism	50 000 6080
Sealing plug for locking mechanism, black	70 046 0716
Cast-iron cover B 125, 1-piece	70 035 3081E
Cast-iron cover D 400, 1-piece	70 035 3080E
Steel frame	70 035 4080E
Manhole with concrete-lined steel cover, lockable ⁴	Order number
Basic kit B 125, not locked, locks retrofittable	06 278 2150
Basic kit D 400, hex locking mechanism	06 278 2151
Basic kit D 400, hex socket locking mechanism	06 278 2151
Basic kit D 400, LIC-lock locking mechanism	06 278 2153
Basic kit D 400, COLT/TELENET locking mechanism	06 278 2154
Accessories for concrete-lined steel cover, lockable	
2 x hex locking mechanism	50 000 6100
2 x hex socket locking mechanism	50 000 7100
2 x LIC-lock locking mechanisms	50 000 8100
2 x COLT/TELENET locking mechanism	50 000 9100
Sealing plug for locking mechanism, black	70 046 0716
Concrete-lined steel cover, B 125, 1-piece	70 040 5785E
Concrete-lined steel cover, D 400, 1-piece	70 040 5780E
Steel frame	70 039 6280E
Manhole with paveable steel cover, lockable ⁴	Order number
Basic kit B 125, not locked, locks retrofittable	06 278 2066
Basic kit D 400, unlocked, locks retrofittable	06 278 2261
Accessories for paveable steel cover, lockable	
2 x hex locking mechanism	50 000 6150
2 x hex socket locking mechanism	50 000 6160
2 x LIC-lock locking mechanisms	50 000 6170
2 x COLT/TELENET locking mechanism	50 000 6180
Sealing plug for locking mechanism, black	70 046 0716
Paveable steel cover, D 400, 1-piece	70 088 1600E
Steel frame	70 088 1620E
For all basic kits	Order number
Top frame, height 66 mm	06 278 0091E
Top frame, height 140 mm	06 278 0082E
Base plate	06 278 0054E