



QualityBox PC EK288 Basic kits

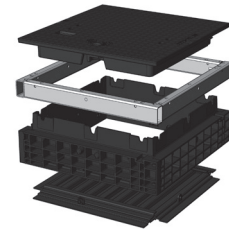
Internal dimensions: 550 x 550 mm

Outer dimensions: 695 x 695 mm

Basic kit with **cast-iron** cover:

Clearance height: 139 mm

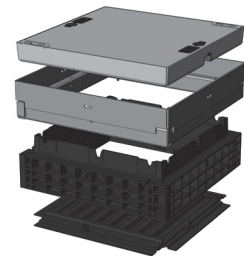
| | | |
|--------------------------------------|--------------------------|--------------------------|
| Test classes according to DIN EN 124 | B 125² | D 400³ |
| Cover | 59.5 kg | 59.5 kg |
| Hot-dip galvanised steel frame | 25.5 kg | 25.5 kg |
| Top frame (standard height) | 9.5 kg | 9.5 kg |
| Base plate | 3.5 kg | 3.5 kg |
| Total weight of basic kit | 98.0 kg | 98.0 kg |
| Overall height of basic kit | 240 mm | 240 mm |



Basic kit with **concrete-lined steel** cover:

Clearance height: 190 mm

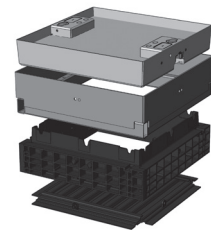
| | | |
|--------------------------------------|--------------------------|--------------------------|
| Test classes according to DIN EN 124 | B 125² | D 400³ |
| Cover | 90.0 kg | 90.0 kg |
| Hot-dip galvanised steel frame | 34.0 kg | 34.0 kg |
| Top frame (standard height) | 9.5 kg | 9.5 kg |
| Base plate | 3.5 kg | 3.5 kg |
| Total weight of basic kit | 137.0 kg | 137.0 kg |
| Overall height of basic kit | 295 mm | 295 mm |



Basic kit with **paveable steel** cover: (paveable height 45 mm)

Clearance height: 190 mm

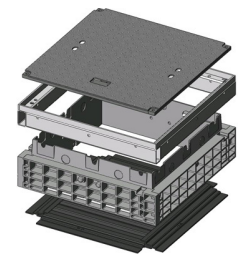
| | | |
|--------------------------------------|--------------------------|--------------------------|
| Test classes according to DIN EN 124 | B 125² | D 400³ |
| Cover (without paving) | 95.0 kg | 95.0 kg |
| Hot-dip galvanised steel frame | 39.0 kg | 39.0 kg |
| Top frame (standard height) | 9.5 kg | 9.5 kg |
| Base plate | 3.5 kg | 3.5 kg |
| Total weight of basic kit | 147.0 kg | 147.0 kg |
| Overall height of basic kit | 340 mm | 340 mm |



Basic kit with **chequered stud plate** cover:

Clearance height: 140 mm

| | |
|--------------------------------------|-------------------------|
| Test classes according to DIN EN 124 | A 15¹ |
| Cover | 24.0 kg |
| Hot-dip galvanised steel frame | 25.5 kg |
| Top frame (standard height) | 9.5 kg |
| Base plate | 3.5 kg |
| Total weight of basic kit | 62.5 kg |
| Overall height of basic kit | 240 mm |





QualityBox PC EK288 Frame

Internal dimensions: 550 x 550 mm
Outer dimensions: 695 x 695 mm



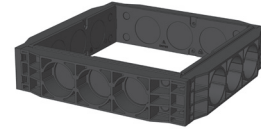
Frame 70 mm

Art. no.: 06 288 0058E
5 x Ø 50
5 x Ø 50
Weight: 5.1 kg



Frame 70 mm overbuild

Art. no.: 06 288 0358E
4 x overbuild / 1 x Ø 50
5 x Ø 50
Weight: 5.1 kg



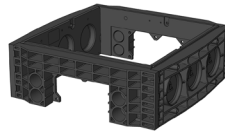
Frame 150 mm

Art. no.: 06 288 0052E
4 x Ø 30 / 3 x Ø 110
4 x Ø 30 / 3 x Ø 110
Weight: 10 kg



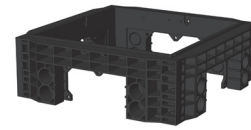
Frame 220 mm

Art. no.: 06 288 0053E
3 x Ø 110
3 x Ø 110
Weight: 16 kg



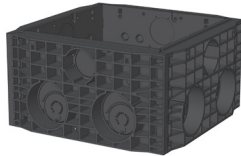
Frame 220 mm

Art. no.: 06 288 0083E
3 x Ø 110
4 x Ø 50 / 1 x rectangular
Weight: 14 kg



Frame 220 mm

Art. no.: 06 288 0084E
4 x Ø 50 / 1 x rectangular
4 x Ø 50 / 1 x rectangular
Weight: 13 kg



Frame 350 mm

Art. no.: 06 288 0059E
6 x Ø 30 / 3 x Ø 110 / 2 x Ø 160
6 x Ø 30 / 3 x Ø 110 / 2 x Ø 160
Weight: 24 kg



QualityBox PC EK288 Order numbers

Internal dimensions: 550 x 550 mm

Outer dimensions: 695 x 695 mm

| Manhole with cast-iron cover, lockable ⁴ | Order number |
|---|---------------------|
| Basic kit B 125, not locked, locks retrofittable | 06 288 2355 |
| Basic kit D 400, hex locking mechanism | 06 288 2326 |
| Basic kit D 400, hex socket locking mechanism | 06 288 2488 |
| Basic kit D 400, LIC-lock locking mechanism | 06 288 2539 |
| Basic kit D 400, COLT/TELENET locking mechanism | 06 288 2607 |
| Accessories for cast-iron cover, lockable | |
| 1 x hex locking mechanism | 50 000 6020 |
| 1 x hex socket locking mechanism | 50 000 6040 |
| 1 x LIC-lock locking mechanism | 50 000 6060 |
| 1 x COLT/TELENET locking mechanism | 50 000 6080 |
| Sealing plug for locking mechanism, black | 70 046 0716 |
| Cast-iron cover B 125, 1-piece | 70 034 3581E |
| Cast-iron cover D 400, 1-piece | 70 034 3580E |
| Steel frame | 70 034 4980E |
| Manhole with concrete-lined steel cover, lockable ⁴ | |
| Basic kit B 125, not locked, locks retrofittable | 06 288 2281 |
| Basic kit D 400, hex locking mechanism | 06 288 2282 |
| Basic kit D 400, hex socket locking mechanism | 06 288 2283 |
| Basic kit D 400, LIC-lock locking mechanism | 06 288 2284 |
| Basic kit D 400, COLT/TELENET locking mechanism | 06 288 2285 |
| Accessories for concrete-lined steel cover, lockable | |
| 2 x hex locking mechanism | 50 000 6100 |
| 2 x hex socket locking mechanism | 50 000 7100 |
| 2 x LIC-lock locking mechanisms | 50 000 8100 |
| 2 x COLT/TELENET locking mechanism | 50 000 9100 |
| Sealing plug for locking mechanism, black | 70 046 0716 |
| Concrete-lined steel cover, B 125, 1-piece | 70 040 2685E |
| Concrete-lined steel cover, D 400, 1-piece | 70 040 2680E |
| Steel frame | 70 039 7180E |
| Manhole with paveable steel cover, lockable ⁴ | |
| Basic kit B 125, not locked, locks retrofittable | 06 288 2134 |
| Basic kit D 400, unlocked, locks retrofittable | 06 288 2608 |
| Accessories for paveable steel cover, lockable | |
| 2 x hex locking mechanism | 50 000 6150 |
| 2 x hex socket locking mechanism | 50 000 6160 |
| 2 x LIC-lock locking mechanisms | 50 000 6170 |
| 2 x COLT/TELENET locking mechanism | 50 000 6180 |
| Sealing plug for locking mechanism, black | 70 046 0716 |
| Paveable steel cover, D 400, 1-piece | 70 088 2200E |
| Steel frame | 70 088 2220E |



QualityBox PC EK288 Order numbers

Internal dimensions: 550 x 550 mm

Outer dimensions: 695 x 695 mm

| Manhole with chequered stud plate cover, screwed down | Order number |
|---|---------------------|
| Basic kit A 15, hex screw connection | 06 288 2787 |
| Basic kit A 15, hex socket screw connection | 06 288 2788 |
| Basic kit A 15, LIC-lock screw connection | 06 288 2789 |
| Basic kit A 15, COLT/TELENET screw connection | 06 288 2790 |
| Accessories for chequered stud plate cover, screwed down | |
| 4 x hex screw connection | 50 000 2200 |
| 4 x hex socket screw connection | 50 000 2300 |
| 4 x LIC-lock screw connections | 50 000 2400 |
| 4 x COLT/TELENET screw connection | 50 000 2450 |
| Chequered stud plate cover, A 15, 1-piece | 70 058 6600E |
| Steel frame | 70 034 4900E |
| For all basic kits | Order number |
| Top frame, height 66 mm | 06 288 0091E |
| Top frame, height 140 mm | 06 288 0082E |
| Base plate, height 5 mm | 06 288 0054E |