



QualityBox PC EK328

Basic kits

Internal dimensions: 800 x 800 mm

Outer dimensions: 960 x 960 mm

Basic kit with cast-iron cover:			Clearance height: 139 mm
Test classes according to DIN EN 124	B 125²	D 400³	
Complete cover	135.5 kg	135.5 kg	
Single cover	67.75 kg	67.75 kg	
Hot-dip galvanised steel frame	30.0 kg	30.0 kg	
Top frame (standard height)	21.5 kg	21.5 kg	
Base plate	6.5 kg	6.5 kg	
Total weight of basic kit	193.5 kg	193.5 kg	
Overall height of basic kit	240 mm	240 mm	

Basic kit with concrete-lined steel cover:			Clearance height: 190 mm
Test classes according to DIN EN 124	B 125²	D 400³	
Complete cover	203.0 kg	203.0 kg	
Single cover	101.5 kg	101.5 kg	
Hot-dip galvanised steel frame	43.0 kg	43.0 kg	
Top frame (standard height)	21.5 kg	21.5 kg	
Base plate	6.5 kg	6.5 kg	
Total weight of basic kit	274.0 kg	274.0 kg	
Overall height of basic kit	310 mm	310 mm	

Basic kit with paveable steel cover: (paveable height 45 mm)			Clearance height: 190 mm
Test classes according to DIN EN 124	B 125²	D 400³	
Complete cover (without paving)	214.0 kg	214.0 kg	
Single cover (without paving)	107.0 kg	107.0 kg	
Hot-dip galvanised steel frame	50.0 kg	50.0 kg	
Top frame (standard height)	21.5 kg	21.5 kg	
Base plate	6.5 kg	6.5 kg	
Total weight of basic kit	292.0 kg	292.0 kg	
Overall height of basic kit	355 mm	355 mm	

Basic kit with chequered stud plate cover:			Clearance height: 140 mm
Test classes according to DIN EN 124	A 15¹		
Cover	49.0 kg		
Hot-dip galvanised steel frame	23.0 kg		
Top frame (standard height)	21.0 kg		
Base plate	6.5 kg		
Total weight of basic kit	99.5 kg		
Overall height of basic kit	240 mm		



QualityBox PC EK328 Frame elements

Internal dimensions: 800 x 800 mm
Outer dimensions: 960 x 960 mm



Frame 70 mm

Art. no.: 06 328 0058E

6 x Ø 50

6 x Ø 50

Weight: 7.8 kg



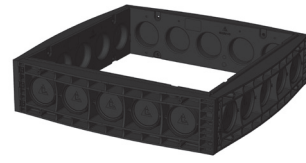
Frame 70 mm overbuild

Art. no.: 06 328 0358E

4 x overbuild / 2 x Ø 50

6 x Ø 50

Weight: 7.8 kg



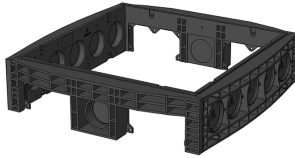
Frame 220 mm

Art. no.: 06 328 0052E

5 x Ø 110

5 x Ø 110

Weight: 25 kg



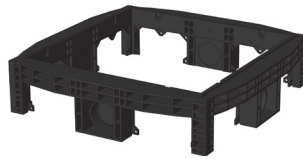
Frame 220 mm

Art. no.: 06 328 0061E

5 x Ø 110

2 x rectangular / 1 x Ø 110

Weight: 21.5 kg



Frame 220 mm

Art. no.: 06 328 0094E

2 x rectangular / 1 x Ø 110

2 x rectangular / 1 x Ø 110

Weight: 18 kg



QualityBox PC EK328

Order numbers

Internal dimensions: 800 x 800 mm

Outer dimensions: 960 x 960 mm

Manhole with cast-iron cover, lockable ⁴	Order number
Basic kit B 125, not locked, locks retrofittable	06 328 2273
Basic kit D 400, hex locking mechanism	06 328 2306
Basic kit D 400, hex socket locking mechanism	06 328 2397
Basic kit D 400, LIC-lock locking mechanism	06 328 2398
Basic kit D 400, COLT/TELENET locking mechanism	06 328 2557
Accessories for cast-iron cover, lockable	
1 x hex locking mechanism	50 000 6020
1 x hex socket locking mechanism	50 000 6040
1 x LIC-lock locking mechanism	50 000 6060
1 x COLT/TELENET locking mechanism	50 000 6080
Sealing plug for locking mechanism, black	70 046 0716
Cast-iron cover B 125, 2-piece	70 052 0040E
Cast-iron cover D 400, 2-piece	70 052 0050E
Steel frame	70 034 5080E
Manhole with concrete-lined steel cover, lockable ⁴	
Basic kit B 125, not locked, locks retrofittable	06 328 2205
Basic kit D 400, hex locking mechanism	06 328 2206
Basic kit D 400, hex socket locking mechanism	06 328 2207
Basic kit D 400, LIC-lock locking mechanism	06 328 2208
Basic kit D 400, COLT/TELENET locking mechanism	06 328 2209
Accessories for concrete-lined steel cover, lockable	
4 x hex locking mechanism	50 000 6300
4 x hex socket locking mechanism	50 000 7300
4 x LIC-lock locking mechanisms	50 000 8300
4 x COLT/TELENET locking mechanism	50 000 9300
Sealing plug for locking mechanism, black	70 046 0716
Concrete-lined steel cover, B 125, 2-piece	70 046 0475E
Concrete-lined steel cover, D 400, 2-piece	70 046 0470E
Steel frame	70 039 7880E
Manhole with paveable steel cover, lockable ⁴	
Basic kit B 125, not locked, locks retrofittable	06 328 2060
Basic kit D 400, unlocked, locks retrofittable	06 328 2528
Accessories for paveable steel cover, lockable	
4 x hex locking mechanism	50 000 6300
4 x hex socket locking mechanism	50 000 7300
4 x LIC-lock locking mechanisms	50 000 8300
4 x COLT/TELENET locking mechanism	50 000 9300
Sealing plug for locking mechanism, black	70 046 0716
Paveable steel cover, D 400, 2-piece	70 088 2600E
Steel frame D 400	70 088 2620E



QualityBox PC EK328 Order numbers

Internal dimensions: 800 x 800 mm

Outer dimensions: 960 x 960 mm

Manhole with chequered stud plate cover, screwed down	Order number
Basic kit A 15, hex screw connection	06 328 2853
Basic kit A 15, hex socket screw connection	06 328 2854
Basic kit A 15, LIC-lock screw connection	06 328 2855
Basic kit A 15, COLT/TELENET screw connection	06 328 2856
Accessories for chequered stud plate cover, screwed down	
4 x hex screw connection	50 000 2200
4 x hex socket screw connection	50 000 2300
4 x LIC-lock screw connections	50 000 2400
4 x COLT/TELENET screw connection	50 000 2450
Chequered stud plate cover, A 15, 1-piece	70 057 0200E
Steel frame	70 034 5000E
For all basic kits	Order number
Top frame, height 66 mm	06 328 0182E
Top frame, height 140 mm	06 328 0082E
Base plate, height 5 mm	06 328 0054E