



QualityBox PC EK338 Basic kits

Internal dimensions: 550 x 1165 mm

Outer dimensions: 746 x 1305 mm

Basic kit with cast-iron cover:			Clearance height: 139 mm
Test classes according to DIN EN 124	B 125²	D 400³	
Complete cover	89.0 kg	89.0 kg	
Single cover	44.5 kg	44.5 kg	
Hot-dip galvanised steel frame	34.5 kg	34.5 kg	
Top frame (standard height)	25.0 kg	25.0 kg	
Base plate	7.0 kg	7.0 kg	
Total weight of basic kit	155.5 kg	155.5 kg	
Overall height of basic kit	240 mm	240 mm	

Basic kit with concrete-lined steel cover:			Clearance height: 190 mm
Test classes according to DIN EN 124	B 125²	D 400³	
Complete cover	173.0 kg	173.0 kg	
Single cover	86.5 kg	86.5 kg	
Hot-dip galvanised steel frame	48.5 kg	48.5 kg	
Top frame (standard height)	25.0 kg	25.0 kg	
Base plate	7.0 kg	7.0 kg	
Total weight of basic kit	253.5 kg	253.5 kg	
Overall height of basic kit	295 mm	295 mm	

Basic kit with paveable steel cover: (paveable height 45 mm)			Clearance height: 190 mm
Test classes according to DIN EN 124	B 125²	D 400³	
Complete cover (without paving)	186.0 kg	186.0 kg	
Single cover (without paving)	93.0 kg	93.0 kg	
Hot-dip galvanised steel frame	56.0 kg	56.0 kg	
Top frame (standard height)	25.0 kg	25.0 kg	
Base plate	7.0 kg	7.0 kg	
Total weight of basic kit	274.0 kg	274.0 kg	
Overall height of basic kit	340 mm	340 mm	

Basic kit with chequered stud plate cover:			Clearance height: 155 mm
Test classes according to DIN EN 124	A 15¹		
Complete cover	53.0 kg		
Single cover	26.5 kg		
Hot-dip galvanised steel frame	35.0 kg		
Top frame (standard height)	25.0 kg		
Base plate	7.0 kg		
Total weight of basic kit	120.0 kg		
Overall height of basic kit	240 mm		



QualityBox PC EK338 Frame

Internal dimensions: 550 x 1165 mm

Outer dimensions: 746 x 1305 mm



Frame 70 mm

Art. no.: 06 338 0058E

5 x Ø 50

6 x Ø 50

Weight: 9.1 kg



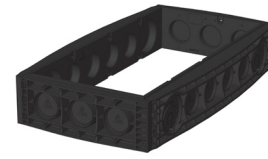
Frame 70 mm overbuild

Art. no.: 06 338 0358E

4 x overbuild / 1 x Ø 50

6 x Ø 50

Weight: 9.1 kg



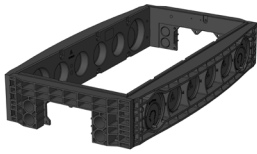
Frame 220 mm

Art. no.: 06 338 0052E

3 x Ø 110

6 x Ø 110 / 2 x Ø 160

Weight: 26.5 kg



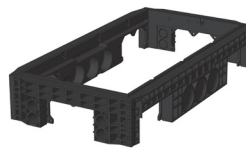
Frame 220 mm

Art. no.: 06 338 0075E

4 x Ø 50 / 1 x rectangular

6 x Ø 110 / 2 x Ø 160

Weight: 25.5 kg



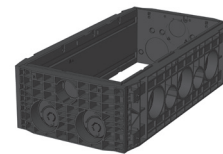
Frame 220 mm

Art. no.: 06 338 0071E

4 x Ø 50 / 1 x rectangular

3 x Ø 110 / 2 x rectangular

Weight: 27.0 kg



Frame 350 mm

Art. no.: 06 338 0059E

3 x Ø 110 / 2 x Ø 1160 / 36 x Ø 30

5 x Ø 110 / 3 x Ø 160

Weight: 53.0 kg



QualityBox PC EK338 Order numbers

Internal dimensions: 550 x 1165 mm

Outer dimensions: 746 x 1305 mm

Manhole with cast-iron cover, lockable ⁴	Order number
Basic kit B 125, not locked, locks retrofittable	06 338 2513
Basic kit D 400, hex locking mechanism	06 338 2435
Basic kit D 400, hex socket locking mechanism	06 338 2516
Basic kit D 400, LIC-lock locking mechanism	06 338 2517
Basic kit D 400, COLT/TELENET locking mechanism	06 338 2518
Accessories for cast-iron cover, lockable	
1 x hex locking mechanism	50 000 6020
1 x hex socket locking mechanism	50 000 6040
1 x LIC-lock locking mechanism	50 000 6060
1 x COLT/TELENET locking mechanism	50 000 6080
Sealing plug for locking mechanism, black	70 046 0716
Cast-iron cover B 125, 2-piece	70 052 0010E
Cast-iron cover D 400, 2-piece	70 052 0000E
Steel frame	70 034 5180E
Manhole with concrete-lined steel cover, lockable ⁴	
Basic kit B 125, not locked, locks retrofittable	06 338 2429
Basic kit D 400, hex locking mechanism	06 338 2430
Basic kit D 400, hex socket locking mechanism	06 338 2431
Basic kit D 400, LIC-lock locking mechanism	06 338 2432
Basic kit D 400, COLT/TELENET locking mechanism	06 338 2433
Accessories for concrete-lined steel cover, lockable	
4 x hex locking mechanism	50 000 6200
4 x hex socket locking mechanism	50 000 7200
4 x LIC-lock locking mechanisms	50 000 8200
4 x COLT/TELENET locking mechanism	50 000 9200
Sealing plug for locking mechanism, black	70 046 0716
Concrete-lined steel cover, B 125, 2-piece	70 040 2775E
Concrete-lined steel cover, D 400, 2-piece	70 040 2770E
Steel frame	70 039 7480E
Manhole with paveable steel cover, lockable ⁴	
Basic kit B 125, not locked, locks retrofittable	06 338 2155
Basic kit D 400, unlocked, locks retrofittable	06 338 2536
Accessories for paveable steel cover, lockable	
4 x hex locking mechanism	50 000 6300
4 x hex socket locking mechanism	50 000 7300
4 x LIC-lock locking mechanisms	50 000 8300
4 x COLT/TELENET locking mechanism	50 000 9300
Sealing plug for locking mechanism, black	70 046 0716
Paveable steel cover, D 400, 2-piece	70 088 2300E
Steel frame	70 088 2320E



QualityBox PC EK338 Order numbers

Internal dimensions: 550 x 1165 mm

Outer dimensions: 746 x 1305 mm

Manhole with chequered stud plate cover, screwed down	Order number
Basic kit A 15, hex screw connection	06 338 3038
Basic kit A 15, hex socket screw connection	06 338 3039
Basic kit A 15, LIC-lock screw connection	06 338 3040
Basic kit A 15, COLT/TELENET screw connection	06 338 3041
Accessories for chequered stud plate cover, screwed down	
8 x hex screw connection	50 000 2600
8 x hex socket screw connection	50 000 2700
8 x LIC-lock screw connections	50 000 2800
8 x COLT/TELENET screw connection	50 000 2850
Chequered stud plate cover, A 15, 2-piece	70 055 3850E
Steel frame	70 034 5100E
For all basic kits	Order number
Top frame, height 140 mm	06 338 0082E
Base plate, height 5 mm	06 338 0054E