



## QualityBox PC EK368 Basic kits

Internal dimensions: 400 x 650 mm

Outer dimensions: 550 x 790 mm

Basic kit with <b>cast-iron</b> cover:			Clearance height: 139 mm
Test classes according to DIN EN 124	<b>B 125<sup>2</sup></b>	<b>D 400<sup>3</sup></b>	
Cover	50.0 kg	50.0 kg	
Hot-dip galvanised steel frame	23.0 kg	23.0 kg	
Top frame (standard height)	11.0 kg	11.0 kg	
Base plate	3.0 kg	3.0 kg	
<b>Total weight of basic kit</b>	<b>87.0 kg</b>	<b>87.0 kg</b>	
<b>Overall height of basic kit</b>	<b>240 mm</b>	<b>240 mm</b>	

Basic kit with <b>concrete-lined steel</b> cover:			Clearance height: 190 mm
Test classes according to DIN EN 124	<b>B 125<sup>2</sup></b>	<b>D 400<sup>3</sup></b>	
Cover	64.0 kg	64.0 kg	
Hot-dip galvanised steel frame	32.0 kg	32.0 kg	
Top frame (standard height)	11.0 kg	11.0 kg	
Base plate	3.0 kg	3.0 kg	
<b>Total weight of basic kit</b>	<b>110.0 kg</b>	<b>110.0 kg</b>	
<b>Overall height of basic kit</b>	<b>295 mm</b>	<b>295 mm</b>	

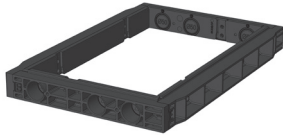
Basic kit with <b>paveable steel</b> cover: (paveable height 45 mm)			Clearance height: 190 mm
Test classes according to DIN EN 124	<b>B 125<sup>2</sup></b>	<b>D 400<sup>3</sup></b>	
Cover (without paving)	80.0 kg	80.0 kg	
Hot-dip galvanised steel frame	35.0 kg	35.0 kg	
Top frame (standard height)	11.0 kg	11.0 kg	
Base plate	3.0 kg	3.0 kg	
<b>Total weight of basic kit</b>	<b>129.0 kg</b>	<b>129.0 kg</b>	
<b>Overall height of basic kit</b>	<b>340 mm</b>	<b>340 mm</b>	

Basic kit with <b>chequered stud plate</b> cover:			Clearance height: 160 mm
Test classes according to DIN EN 124	<b>A 15<sup>1</sup></b>		
Cover	25.0 kg		
Hot-dip galvanised steel frame	23.0 kg		
Top frame (standard height)	11.0 kg		
Base plate	3.0 kg		
<b>Total weight of basic kit</b>	<b>62.0 kg</b>		
<b>Overall height of basic kit</b>	<b>240 mm</b>		



## QualityBox PC EK368 Frame

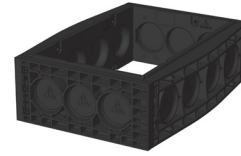
Internal dimensions: 400 x 650 mm  
Outer dimensions: 550 x 790 mm



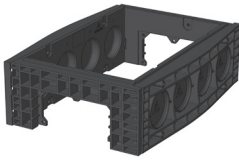
**Frame 70 mm**  
Art. no.: 06 368 0058E  
3 x Ø 50  
3 x Ø 50  
Weight: 3.8 kg



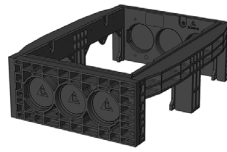
**Frame 70 mm  
overbuild**  
Art. no.: 06 368 0358E  
2 x overbuild / 1 x Ø 50  
3 x Ø 50  
Weight: 3.8 kg



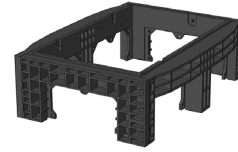
**Frame 220 mm**  
Art. no.: 06 368 0052E  
3 x Ø 110  
4 x Ø 110  
Weight: 13.5 kg



**Frame 220 mm**  
Art. no.: 06 368 0073E  
1 x rectangular  
4 x Ø 110  
Weight: 12.5 kg



**Frame 220 mm**  
Art. no.: 06 368 0074E  
3 x Ø 110  
2 x rectangular  
Weight: 11.5 kg



**Frame 220 mm**  
Art. no.: 06 368 0072E  
1 x rectangular  
2 x rectangular  
Weight: 10.5 kg



## QualityBox PC EK368 Order numbers

Internal dimensions: 400 x 650 mm

Outer dimensions: 550 x 790 mm

<b>Manhole with cast-iron cover, lockable <sup>4</sup></b>	<b>Order number</b>
Basic kit B 125, not locked, locks retrofittable	06 368 1349
Basic kit D 400, hex locking mechanism	06 368 1336
Basic kit D 400, hex socket locking mechanism	06 368 1528
Basic kit D 400, LIC-lock locking mechanism	06 368 1529
Basic kit D 400, COLT/TELENET locking mechanism	06 368 1530
<b>Accessories for cast-iron cover, lockable</b>	
1 x hex locking mechanism	50 000 6020
1 x hex socket locking mechanism	50 000 6040
1 x LIC-lock locking mechanism	50 000 6060
1 x COLT/TELENET locking mechanism	50 000 6080
Sealing plug for locking mechanism, black	70 046 0716
Cast-iron cover B 125, 1-piece	70 034 0282E
Cast-iron cover D 400, 1-piece	70 034 0181E
Steel frame	70 034 5380E
<b>Manhole with concrete-lined steel cover, lockable <sup>4</sup></b>	
<b>Order number</b>	
Basic kit B 125, not locked, locks retrofittable	06 368 1213
Basic kit D 400, hex locking mechanism	06 368 1214
Basic kit D 400, hex socket locking mechanism	06 368 1215
Basic kit D 400, LIC-lock locking mechanism	06 368 1216
Basic kit D 400, COLT/TELENET locking mechanism	06 368 1217
<b>Accessories for concrete-lined steel cover, lockable</b>	
2 x hex locking mechanism	50 000 6100
2 x hex socket locking mechanism	50 000 7100
2 x LIC-lock locking mechanisms	50 000 8100
2 x COLT/TELENET locking mechanism	50 000 9100
Sealing plug for locking mechanism, black	70 046 0716
Concrete-lined steel cover, B 125, 1-piece	70 046 3050E
Concrete-lined steel cover, D 400, 1-piece	70 046 3000E
Steel frame	70 039 6880E
<b>Manhole with paveable steel cover, lockable <sup>4</sup></b>	
<b>Order number</b>	
Basic kit B 125, not locked, locks retrofittable	06 368 1062
Basic kit D 400, unlocked, locks retrofittable	06 368 1531
<b>Accessories for paveable steel cover, lockable</b>	
2 x hex locking mechanism	50 000 6150
2 x hex socket locking mechanism	50 000 6160
2 x LIC-lock locking mechanisms	50 000 6170
2 x COLT/TELENET locking mechanism	50 000 6180
Sealing plug for locking mechanism, black	70 046 0716
Paveable steel cover, D 400, 1-piece	70 088 1800E
Steel frame	70 088 1820E



## QualityBox PC EK368 Order numbers

Internal dimensions: 400 x 650 mm

Outer dimensions: 550 x 790 mm

<b>Manhole with chequered stud plate cover, screwed down</b>	<b>Order number</b>
Basic kit A 15, hex screw connection	06 368 1680
Basic kit A 15, hex socket screw connection	06 368 1845
Basic kit A 15, LIC-lock screw connection	06 368 1846
Basic kit A 15, COLT/TELENET screw connection	06 368 1847
<b>Accessories for chequered stud plate cover, screwed down</b>	
4 x hex screw connection	50 000 2200
4 x hex socket screw connection	50 000 2300
4 x LIC-lock screw connections	50 000 2400
4 x COLT/TELENET screw connection	50 000 2450
Chequered stud plate cover, A 15, 1-piece	70 060 3600E
Steel frame	70 034 5399E
<b>For all basic kits</b>	<b>Order number</b>
Top frame, height 140 mm	06 368 0082E
Base plate, height 5 mm	06 368 0054E