



QualityBox PC EK378 Basic kits

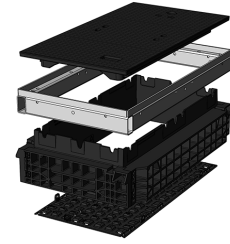
Internal dimensions: 400 x 800 mm

Outer dimensions: 560 x 940 mm

Basic kit with **cast-iron** cover:

Clearance height: 139 mm

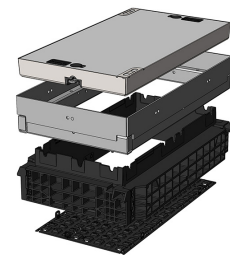
Test classes according to DIN EN 124	B 125²	D 400³
Cover	45.0 kg	45.0 kg
Hot-dip galvanised steel frame	23.0 kg	23.0 kg
Top frame (standard height)	15.0 kg	15.0 kg
Base plate	3.5 kg	3.5 kg
Total weight of basic kit	86.5 kg	86.5 kg
Overall height of basic kit	240 mm	240 mm



Basic kit with **concrete-lined steel** cover:

Clearance height: 190 mm

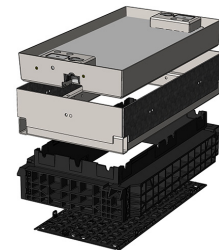
Test classes according to DIN EN 124	B 125²	D 400³
Cover	92 kg	92 kg
Hot-dip galvanised steel frame	34.0 kg	34.0 kg
Top frame (standard height)	15.0 kg	15.0 kg
Base plate	3.5 kg	3.5 kg
Total weight of basic kit	144.5 kg	144.5 kg
Overall height of basic kit	295 mm	295 mm



Basic kit with **paveable steel** cover: (paveable height 45 mm)

Clearance height: 190 mm

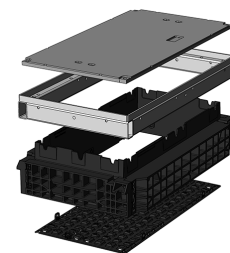
Test classes according to DIN EN 124	B 125²	D 400³
Cover (without paving)	99.0 kg	99.0 kg
Hot-dip galvanised steel frame	35.0 kg	35.0 kg
Top frame (standard height)	15.0 kg	15.0 kg
Base plate	3.5 kg	3.5 kg
Total weight of basic kit	152.5 kg	152.5 kg
Overall height of basic kit	340 mm	340 mm



Basic kit with **chequered stud plate** cover:

Clearance height: 160 mm

Test classes according to DIN EN 124	A 15¹
Cover	18.0 kg
Hot-dip galvanised steel frame	23.0 kg
Top frame (standard height)	15.0 kg
Base plate	3.5 kg
Total weight of basic kit	59.5 kg
Overall height of basic kit	240 mm





QualityBox PC EK378 Frame

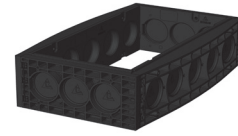
Internal dimensions: 400 x 800 mm
Outer dimensions: 560 x 940 mm



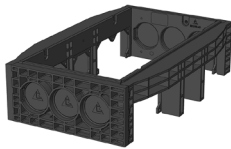
Frame 70 mm
Art. no.: 06 378 0058E
3 x Ø 50
6 x Ø 50
Weight: 5.7 kg



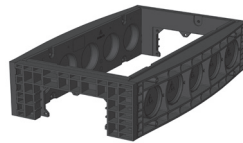
**Frame 70 mm
overbuild**
Art. no.: 06 378 0358E
2 x overbuild / 1 x Ø 50
6 x Ø 50
Weight: 5.7 kg



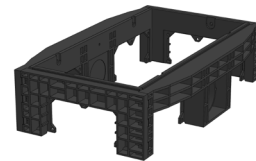
Frame 220 mm
Art. no.: 06 378 0052E
3 x Ø 110
5 x Ø 110
Weight: 16.5 kg



Frame 220 mm
Art. no.: 06 378 0061E
3 x Ø 110
2 x rectangular / 1 x Ø 110
Weight: 13.0 kg



Frame 220 mm
Art. no.: 06 378 0077E
1 x rectangular
5 x Ø 110
Weight: 15.5 kg



Frame 220 mm
Art. no.: 06 378 0053E
1 x rectangular
2 x rectangular / 1 x Ø 110
Weight: 10.0 kg



QualityBox PC EK378 Order numbers

Internal dimensions: 400 x 800 mm

Outer dimensions: 560 x 940 mm

Manhole with cast-iron cover, lockable ⁴	Order number
Basic kit B 125, not locked, locks retrofittable	06 378 1194
Basic kit D 400, hex locking mechanism	06 378 1219
Basic kit D 400, hex socket locking mechanism	06 378 1334
Basic kit D 400, LIC-lock locking mechanism	06 378 1335
Basic kit D 400, COLT/TELENET locking mechanism	06 378 1336
Accessories for cast-iron cover, lockable	
1 x hex locking mechanism	50 000 6020
1 x hex socket locking mechanism	50 000 6040
1 x LIC-lock locking mechanism	50 000 6060
1 x COLT/TELENET locking mechanism	50 000 6080
Sealing plug for locking mechanism, black	70 046 0716
Cast-iron cover B 125, 1-piece	70 035 0581E
Cast-iron cover D 400, 1-piece	70 078 7100
Steel frame	70 034 5480E
Manhole with concrete-lined steel cover, lockable ⁴	
Basic kit B 125, not locked, locks retrofittable	06 378 1153
Basic kit D 400, hex locking mechanism	06 378 1154
Basic kit D 400, hex socket locking mechanism	06 378 1155
Basic kit D 400, LIC-lock locking mechanism	06 378 1156
Basic kit D 400, COLT/TELENET locking mechanism	06 378 1157
Accessories for concrete-lined steel cover, lockable	
2 x hex locking mechanism	50 000 6100
2 x hex socket locking mechanism	50 000 7100
2 x LIC-lock locking mechanisms	50 000 8100
2 x COLT/TELENET locking mechanism	50 000 9100
Sealing plug for locking mechanism, black	70 046 0716
Concrete-lined steel cover, B 125, 1-piece	70 045 2255E
Concrete-lined steel cover, D 400, 1-piece	70 045 2200E
Steel frame	70 045 2100E
Manhole with paveable steel cover, lockable ⁴	
Basic kit B 125, not locked, locks retrofittable	06 378 1038
Basic kit D 400, unlocked, locks retrofittable	06 378 1344
Accessories for paveable steel cover, lockable	
2 x hex locking mechanism	50 000 6150
2 x hex socket locking mechanism	50 000 6160
2 x LIC-lock locking mechanisms	50 000 6170
2 x COLT/TELENET locking mechanism	50 000 6180
Sealing plug for locking mechanism, black	70 046 0716
Paveable steel cover, D 400, 1-piece	70 088 1900E
Steel frame	70 088 1920E



QualityBox PC EK378 Order numbers

Internal dimensions: 400 x 800 mm

Outer dimensions: 560 x 940 mm

Manhole with chequered stud plate cover, screwed down	Order number
Basic kit A 15, hex screw connection	06 378 1488
Basic kit A 15, hex socket screw connection	06 378 1489
Basic kit A 15, LIC-lock screw connection	06 378 1490
Basic kit A 15, COLT/TELENET screw connection	06 378 1491
Accessories for chequered stud plate cover, screwed down	
4 x hex screw connection	50 000 2200
4 x hex socket screw connection	50 000 2300
4 x LIC-lock screw connections	50 000 2400
4 x COLT/TELENET screw connection	50 000 2450
Chequered stud plate cover, A 15, 1-piece	70 058 6400E
Steel frame	70 034 5400E
For all basic kits	Order number
Top frame, height 140 mm	06 378 0082E
Base plate, height 5 mm	06 378 0054E