



# QualityBox PC EK428

## Basic kits

Internal dimensions: 800 x 1400 mm

Basic kit with triangular <b>swivelling</b> cast-iron cover:		Outer dimensions: 1030 x 1590 mm Clearance height: 135 mm
Test classes according to DIN EN 124	<b>D 400<sup>3</sup></b>	
Complete cover	315.0 kg	
Single cover	57.0 kg	
Special top frame	34.5 kg	
Base plate	10.5 kg	
<b>Total weight of basic kit</b>	<b>360.0 kg</b>	
<b>Overall height of basic kit</b>	<b>285 mm</b>	

Basic kit with rectangular <b>swivelling</b> cast-iron cover:		Outer dimensions: 1240 x 1580 mm Clearance height: 175 mm
Test classes according to DIN EN 124	<b>D 400<sup>3</sup></b>	
Complete cover	220.0 kg	
Single cover	55.0 kg	
Steel frame	50.0 kg	
Top frame	34.5 kg	
Base plate	10.5 kg	
<b>Total weight of basic kit</b>	<b>315.0 kg</b>	
<b>Overall height of basic kit</b>	<b>274 mm</b>	

Basic kit with <b>concrete-lined steel</b> cover:			Outer dimensions: 960 x 1560 mm Clearance height: 190 mm
Test classes according to DIN EN 124	<b>B 125<sup>2</sup></b>	<b>D 400<sup>3</sup></b>	
Complete cover	336.0 kg	336.0 kg	
Single cover	112.0 kg	112.0 kg	
Hot-dip galvanised steel frame	59.0 kg	59.0 kg	
Top frame (standard height)	34.5 kg	34.5 kg	
Base plate	10.5 kg	10.5 kg	
<b>Total weight of basic kit</b>	<b>440.0 kg</b>	<b>440.0 kg</b>	
<b>Overall height of basic kit</b>	<b>310 mm</b>	<b>310 mm</b>	

Basic kit with <b>paveable steel</b> cover: (paveable height 45 mm)			Outer dimensions: 960 x 1560 mm Clearance height: 190 mm
Test classes according to DIN EN 124	<b>B 125<sup>2</sup></b>	<b>D 400<sup>3</sup></b>	
Complete cover (without paving)	367.0 kg	367.0 kg	
Single cover (without paving)	122.5 kg	122.5 kg	
Hot-dip galvanised steel frame	67.0 kg	67.0 kg	
Top frame (standard height)	34.5 kg	34.5 kg	
Base plate	10.5 kg	10.5 kg	
<b>Total weight of basic kit</b>	<b>479.0 kg</b>	<b>479.0 kg</b>	
<b>Overall height of basic kit</b>	<b>355 mm</b>	<b>355 mm</b>	

Basic kit with <b>chequered stud plate</b> cover:		Outer dimensions: 960 x 1560 mm Clearance height: 115 mm
Test classes according to DIN EN 124	<b>A 15<sup>1</sup></b>	
Complete cover	120.0 kg	
Single cover	40.0 kg	
Hot-dip galvanised steel frame	31.0 kg	
Top frame (standard height)	34.5 kg	
Base plate	10.5 kg	
<b>Total weight of basic kit</b>	<b>196.0 kg</b>	
<b>Overall height of basic kit</b>	<b>240 mm</b>	



## QualityBox PC EK428 Frame

Internal dimensions: 800 x 1400 mm



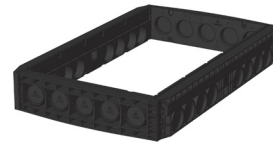
### Frame 70 mm

Art. no.: 06 428 0058E  
6 x Ø 50  
Weight: 18.0 kg



### Frame 70 mm overbuild

Art. no.: 06 428 0358E  
4 x overbuild / 2 x Ø 50  
Weight: 18.0 kg



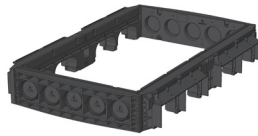
### Frame 220 mm

Art. no.: 06 428 0052E  
5 x Ø 110  
8 x Ø 110  
Weight: 45.0 kg



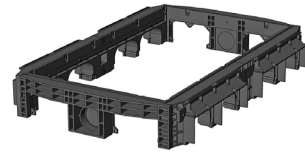
### Frame 220 mm

Art. no.: 06 428 0061E  
2 x rectangular / 1 x Ø 110  
8 x Ø 110  
Weight: 41.5 kg



### Frame 220 mm

Art. no.: 06 428 0085E  
5 x Ø 110  
4 x rectangular  
Weight: 41.5 kg



### Frame 220 mm

Art. no.: 06 428 0062E  
2 x rectangular / 1 x Ø 110  
4 x rectangular  
Weight: 41.5 kg



## QualityBox PC EK428 Order numbers

Internal dimensions: 800 x 1400 mm

<b>Manhole with triangular swivelling cast-iron cover, lockable <sup>4</sup></b>	<b>Order number</b>
Basic kit D 400, COLT/TELENET/OTC locking mechanism	06 428 2202
<b>Accessories for triangular swivelling cast-iron cover, lockable</b>	
Cast-iron cover D 400, 4-piece	06 428 0281E
<b>Manhole with rectangular swivelling cast-iron cover, lockable <sup>4</sup></b>	<b>Order number</b>
Basic kit D 400, COLT/TELENET locking mechanism	06 428 2000
<b>Accessories for rectangular swivelling cast-iron cover, lockable</b>	
Locking flap for locking mechanism	70 065 8202E
Cast-iron cover D 400, 4-piece, with steel frame	06 428 0252E
Top frame	06 428 0083E
<b>Manhole with concrete-lined steel cover, lockable <sup>4</sup></b>	<b>Order number</b>
Basic kit B 125, not locked, locks retrofittable	06 428 1006
Basic kit D 400, hex locking mechanism	06 428 1010
Basic kit D 400, hex socket locking mechanism	06 428 1014
Basic kit D 400, LIC-lock locking mechanism	06 428 1011
Basic kit D 400, COLT/TELENET locking mechanism	06 428 1015
<b>Accessories for concrete-lined steel cover, lockable</b>	
6 x hex locking mechanism	50 000 6500
6 x hex socket locking mechanism	50 000 7500
6 x LIC-lock locking mechanisms	50 000 8500
6 x COLT/TELENET locking mechanism	50 000 9500
Sealing plug for locking mechanism, black	70 046 0716
Concrete-lined steel cover, B 125, 3-piece	70 045 8675E
Concrete-lined steel cover, D 400, 3-piece	70 045 8670E
Steel frame	70 042 0180E
<b>Manhole with paveable steel cover, lockable <sup>4</sup></b>	<b>Order number</b>
Basic kit B 125, not locked, locks retrofittable	06 428 1005
Basic kit D 400, unlocked, locks retrofittable	06 428 1038
<b>Accessories for paveable steel cover, lockable</b>	
6 x hex locking mechanism	50 000 6500
6 x hex socket locking mechanism	50 000 7500
6 x LIC-lock locking mechanisms	50 000 8500
6 x COLT/TELENET locking mechanism	50 000 9500
Sealing plug for locking mechanism, black	70 046 0716
Paveable steel cover, D 400, 3-piece	70 088 2800E
Steel frame D 400	70 088 2820E



## QualityBox PC EK428 Order numbers

Internal dimensions: 800 x 1400 mm

<b>Manhole with chequered stud plate cover, screwed down</b>	<b>Order number</b>
Basic kit A 15 hex screw connection	06 428 1041
Basic kit A 15, hex socket screw connection	06 428 1139
Basic kit A 15, LIC-lock screw connection	06 428 1140
Basic kit A 15, COLT/TELENET screw connection	06 428 1141
<b>Accessories for chequered stud plate cover, screwed down</b>	
6 x hex screw connection	50 000 2460
6 x hex socket screw connection	50 000 2470
6 x LIC-lock screw connections	50 000 2480
6 x COLT/TELENET screw connection	50 000 2490
Chequered stud plate cover, A 15, 3-piece	70 058 6300E
Steel frame	70 058 6900E
<b>For all basic kits</b>	
Top frame, height 140 mm	06 428 0082E
Base plate, height 5 mm	06 428 0054E