



## QualityBox PC EK478 Basic kits

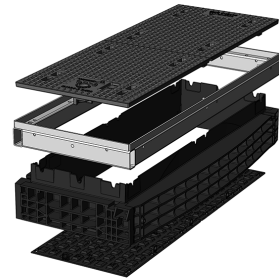
Internal dimensions: 400 x 1165 mm

Outer dimensions: 590 x 1300 mm

### Basic kit with **cast-iron** cover:

Clearance height: 139 mm

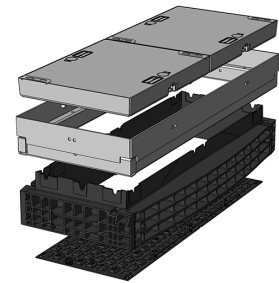
Test classes according to DIN EN 124	<b>B 125<sup>2</sup></b>	<b>D 400<sup>3</sup></b>
Complete cover	71.0 kg	71.0 kg
Single cover	35.5 kg	35.5 kg
Hot-dip galvanised steel frame	32.0 kg	32.0 kg
Top frame (standard height)	24.0 kg	24.0 kg
Base plate	4.5 kg	4.5 kg
<b>Total weight of basic kit</b>	<b>131.5 kg</b>	<b>131.5 kg</b>
<b>Overall height of basic kit</b>	<b>240 mm</b>	<b>240 mm</b>



### Basic kit with **concrete-lined steel** cover:

Clearance height: 190 mm

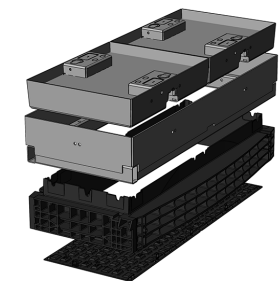
Test classes according to DIN EN 124	<b>B 125<sup>2</sup></b>	<b>D 400<sup>3</sup></b>
Complete cover	129.0 kg	129.0 kg
Single cover	64.5 kg	64.5 kg
Hot-dip galvanised steel frame	46.0 kg	46.0 kg
Top frame (standard height)	24.0 kg	24.0 kg
Base plate	4.5 kg	4.5 kg
<b>Total weight of basic kit</b>	<b>203.5 kg</b>	<b>203.5 kg</b>
<b>Overall height of basic kit</b>	<b>295 mm</b>	<b>295 mm</b>



### Basic kit with **paveable steel** cover: (paveable height 45 mm)

Clearance height: 190 mm

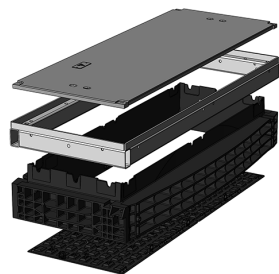
Test classes according to DIN EN 124	<b>B 125<sup>2</sup></b>	<b>D 400<sup>3</sup></b>
Complete cover (without paving)	140.0 kg	140.0 kg
Single cover (without paving)	70.0 kg	70.0 kg
Hot-dip galvanised steel frame	50.0 kg	50.0 kg
Top frame (standard height)	24.0 kg	24.0 kg
Base plate	4.5 kg	4.5 kg
<b>Total weight of basic kit</b>	<b>218.5 kg</b>	<b>218.5 kg</b>
<b>Overall height of basic kit</b>	<b>340 mm</b>	<b>340 mm</b>



### Basic kit with **chequered stud plate** cover:

Clearance height: 160 mm

Test classes according to DIN EN 124	<b>A 15<sup>1</sup></b>
Complete cover	33.0 kg
Single cover	16.5 kg
Hot-dip galvanised steel frame	31.5 kg
Top frame (standard height)	24.0 kg
Base plate	4.5 kg
<b>Total weight of basic kit</b>	<b>93.0 kg</b>
<b>Overall height of basic kit</b>	<b>240 mm</b>





## QualityBox PC EK478 Frame

Internal dimensions: 400 x 1165 mm  
Outer dimensions: 590 x 1300 mm



### Frame 70 mm

Art. no.: 06 478 0058E

3 x Ø 50

6 x Ø 50

Weight: 8.3 kg



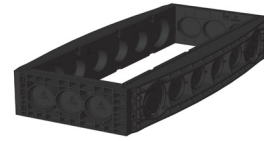
### Frame 70 mm overbuild

Art. no.: 06 478 0358E

2 x overbuild / 1 x Ø 50

6 x Ø 50

Weight: 8.3 kg



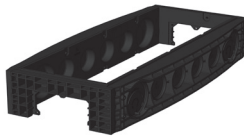
### Frame 220 mm

Art. no.: 06 478 0052E

3 x Ø 110

6 x Ø 110 / 2 x Ø 160

Weight: 23.0 kg



### Frame 220 mm

Art. no.: 06 478 0073E

1 x rectangular

6 x Ø 110 / 2 x Ø 160

Weight: 22.0 kg



## QualityBox PC EK478 Order numbers

Internal dimensions: 400 x 1165 mm

Outer dimensions: 590 x 1300 mm

<b>Manhole with cast-iron cover, lockable <sup>4</sup></b>	<b>Order number</b>
Basic kit B 125, not locked, locks retrofittable	06 478 1141
Basic kit D 400, hex locking mechanism	06 478 1149
Basic kit D 400, hex socket locking mechanism	06 478 1213
Basic kit D 400, LIC-lock locking mechanism	06 478 1214
Basic kit D 400, COLT/TELENET locking mechanism	06 478 1215
<b>Accessories for cast-iron cover, lockable</b>	
1 x hex locking mechanism	50 000 6020
1 x hex socket locking mechanism	50 000 6040
1 x LIC-lock locking mechanism	50 000 6060
1 x COLT/TELENET locking mechanism	50 000 6080
Sealing plug for locking mechanism, black	70 046 0716
Cast-iron cover B 125, 2-piece	70 052 0030E
Cast-iron cover D 400, 2-piece	70 052 0020E
Steel frame	70 034 5980E
<b>Manhole with concrete-lined steel cover, lockable <sup>4</sup></b>	
<b>Order number</b>	
Basic kit B 125, not locked, locks retrofittable	06 478 1093
Basic kit D 400, hex locking mechanism	06 478 1094
Basic kit D 400, hex socket locking mechanism	06 478 1095
Basic kit D 400, LIC-lock locking mechanism	06 478 1096
Basic kit D 400, COLT/TELENET locking mechanism	06 478 1097
<b>Accessories for concrete-lined steel cover, lockable</b>	
4 x hex locking mechanism	50 000 6200
4 x hex socket locking mechanism	50 000 7200
4 x LIC-lock locking mechanisms	50 000 8200
4 x COLT/TELENET locking mechanism	50 000 9200
Sealing plug for locking mechanism, black	70 046 0716
Concrete-lined steel cover, B 125, 2-piece	70 040 6775E
Concrete-lined steel cover, D 400, 2-piece	70 040 6770E
Steel frame	70 039 7080E
<b>Manhole with paveable steel cover, lockable <sup>4</sup></b>	
<b>Order number</b>	
Basic kit B 125, not locked, locks retrofittable	06 478 1034
Basic kit D 400, unlocked, locks retrofittable	06 478 1216
<b>Accessories for paveable steel cover, lockable</b>	
4 x hex locking mechanism	50 000 6300
4 x hex socket locking mechanism	50 000 7300
4 x LIC-lock locking mechanisms	50 000 8300
4 x COLT/TELENET locking mechanism	50 000 9300
Sealing plug for locking mechanism, black	70 046 0716
Paveable steel cover, D 400, 2-piece	70 088 2000E
Steel frame	70 088 2020E



## QualityBox PC EK478 Order numbers

Internal dimensions: 400 x 1165 mm

Outer dimensions: 590 x 1300 mm

<b>Manhole with chequered stud plate cover, screwed down</b>	<b>Order number</b>
Basic kit A 15, hex screw connection	06 478 1337
Basic kit A 15, hex socket screw connection	06 478 1338
Basic kit A 15, LIC-lock screw connection	06 478 1339
Basic kit A 15, COLT/TELENET screw connection	06 478 1340
<b>Accessories for chequered stud plate cover, screwed down</b>	
4 x hex screw connection	50 000 2200
4 x hex socket screw connection	50 000 2300
4 x LIC-lock screw connections	50 000 2400
4 x COLT/TELENET screw connection	50 000 2450
Chequered stud plate cover, A 15, 1-piece	70 058 7100E
Steel frame	70 034 5900E
<b>For all basic kits</b>	<b>Order number</b>
Top frame, height 140 mm	06 478 0082E
Base plate, height 5 mm	06 478 0054E