



QualityBox PC EK508 Basic kits

Internal dimensions: 800 x 1165 mm

Outer dimensions: 990 x 1330 mm

Basic kit with cast-iron cover:			Clearance height: 139 mm
Test classes according to DIN EN 124	B 125²	D 400³	
Complete cover	194.0 kg	194.0 kg	
Single cover	97.0 kg	97.0 kg	
Hot-dip galvanised steel frame	38.0 kg	38.0 kg	
Top frame (standard height)	31.5 kg	31.5 kg	
Base plate	9.5 kg	9.5 kg	
Total weight of basic kit	273.0 kg	273.0 kg	
Overall height of basic kit	240 mm	240 mm	

Basic kit with concrete-lined steel cover:			Clearance height: 190 mm
Test classes according to DIN EN 124	B 125²	D 400³	
Complete cover	282.0 kg	282.0 kg	
Single cover	141.0 kg	141.0 kg	
Hot-dip galvanised steel frame	52.0 kg	52.0 kg	
Top frame (standard height)	31.5 kg	31.5 kg	
Base plate	9.5 kg	9.5 kg	
Total weight of basic kit	375.0 kg	375.0 kg	
Overall height of basic kit	310 mm	310 mm	

Basic kit with paveable steel cover: (paveable height 45 mm)			Clearance height: 190 mm
Test classes according to DIN EN 124	B 125²	D 400³	
Complete cover (without paving)	298.0 kg	298.0 kg	
Single cover (without paving)	149.0 kg	149.0 kg	
Hot-dip galvanised steel frame	63.0 kg	63.0 kg	
Top frame (standard height)	31.5 kg	31.5 kg	
Base plate	9.5 kg	9.5 kg	
Total weight of basic kit	402.0 kg	402.0 kg	
Overall height of basic kit	355 mm	355 mm	

Basic kit with chequered stud plate cover:			Clearance height: 135 mm
Test classes according to DIN EN 124	A 15¹		
Complete cover	87.0 kg		
Single cover	43.5 kg		
Hot-dip galvanised steel frame	38.0 kg		
Top frame (standard height)	31.5 kg		
Base plate	9.5 kg		
Total weight of basic kit	166.0 kg		
Overall height of basic kit	240 mm		



QualityBox PC EK508 Frame

Internal dimensions: 800 x 1165 mm
Outer dimensions: 990 x 1330 mm



Frame 70 mm

Art. no.: 06 508 0058E

6 x Ø 50

6 x Ø 50

Weight: 10.5 kg



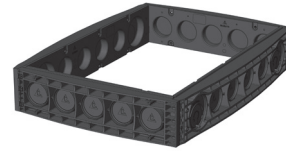
Frame 70 mm overbuild

Art. no.: 06 508 0358E

4 x overbuild / 2 x Ø 50

6 x Ø 50

Weight: 10.5 kg



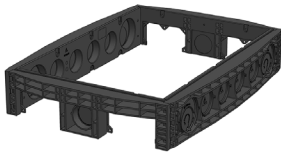
Frame 220 mm

Art. no.: 06 508 0052E

5 x Ø 110

6 x Ø 110 / 2 x Ø 160

Weight: 28.0 kg



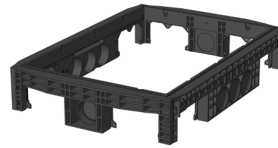
Frame 220 mm

Art. no.: 06 508 0049E

2 x rectangular / 1 x Ø 110

6 x Ø 110 / 2 x Ø 160

Weight: 27.0 kg



Frame 220 mm

Art. no.: 06 508 0055E

2 x rectangular / 1 x Ø 110

2 x rectangular / 3 x Ø 110

Weight: 27.0 kg



QualityBox PC EK508 Order numbers

Internal dimensions: 800 x 1165 mm

Outer dimensions: 990 x 1330 mm

Manhole with cast-iron cover, lockable ⁴	Order number
Basic kit B 125, not locked, locks retrofittable	06 508 1386
Basic kit D 400, hex locking mechanism	06 508 1387
Basic kit D 400, hex socket locking mechanism	06 508 1388
Basic kit D 400, LIC-lock locking mechanism	06 508 1389
Basic kit D 400, COLT/TELENET locking mechanism	06 508 1390
Accessories for cast-iron cover, lockable	
1 x hex locking mechanism	50 000 6020
1 x hex socket locking mechanism	50 000 6040
1 x LIC-lock locking mechanism	50 000 6060
1 x COLT/TELENET locking mechanism	50 000 6080
Sealing plug for locking mechanism, black	70 046 0716
Cast-iron cover B 125, 2-piece	70 052 0070E
Cast-iron cover D 400, 2-piece	70 052 0060E
Steel frame	70 034 6281E
Manhole with concrete-lined steel cover, lockable ⁴	
Basic kit B 125, not locked, locks retrofittable	06 508 1310
Basic kit D 400, hex locking mechanism	06 508 1311
Basic kit D 400, hex socket locking mechanism	06 508 1312
Basic kit D 400, LIC-lock locking mechanism	06 508 1313
Basic kit D 400, COLT/TELENET locking mechanism	06 508 1314
Accessories for concrete-lined steel cover, lockable	
4 x hex locking mechanism	50 000 6300
4 x hex socket locking mechanism	50 000 7300
4 x LIC-lock locking mechanisms	50 000 8300
4 x COLT/TELENET locking mechanism	50 000 9300
Sealing plug for locking mechanism, black	70 046 0716
Concrete-lined steel cover, B 125, 2-piece	70 046 0375E
Concrete-lined steel cover, D 400, 2-piece	70 046 0370E
Steel frame	70 039 7980E
Manhole with paveable steel cover, lockable ⁴	
Basic kit B 125, not locked, locks retrofittable	06 508 1113
Basic kit D 400, unlocked, locks retrofittable	06 508 1639
Accessories for paveable steel cover, lockable	
4 x hex locking mechanism	50 000 6300
4 x hex socket locking mechanism	50 000 7300
4 x LIC-lock locking mechanisms	50 000 8300
4 x COLT/TELENET locking mechanism	50 000 9300
Sealing plug for locking mechanism, black	70 046 0716
Paveable steel cover, D 400, 2-piece	70 088 2700E
Steel frame	70 088 2720E



QualityBox PC EK508 Order numbers

Internal dimensions: 800 x 1165 mm

Outer dimensions: 990 x 1330 mm

Manhole with chequered stud plate cover, screwed down	Order number
Basic kit A 15, hex screw connection	06 508 1847
Basic kit A 15, hex socket screw connection	06 508 1900
Basic kit A 15, LIC-lock screw connection	06 508 1901
Basic kit A 15, COLT/TELENET screw connection	06 508 1902
Accessories for chequered stud plate cover, screwed down	
8 x hex screw connection	50 000 2600
8 x hex socket screw connection	50 000 2700
8 x LIC-lock screw connections	50 000 2800
8 x COLT/TELENET screw connection	50 000 2850
Chequered stud plate cover, A 15, 2-piece	70 052 3050E
Steel frame	70 034 6200E
For all basic kits	Order number
Top frame, height 140 mm	06 508 0082E
Base plate, height 5 mm	06 508 0054E