



## QualityBox PC EK628 Basic kits

Internal dimensions: 400 x 1600 mm

Outer dimensions: 550 x 1730 mm

Basic kit with <b>cast-iron cover</b> :			Clearance height: 240 mm
Test classes according to DIN EN 124	<b>B 125<sup>2</sup></b>	<b>D 400<sup>3</sup></b>	
Complete cover	96.0 kg	96.0 kg	
Single cover	48.0 kg	48.0 kg	
Hot-dip galvanised steel frame	28.0 kg	28.0 kg	
Top frame (standard height)	31.0 kg	31.0 kg	
Base plate	6.0 kg	6.0 kg	
<b>Total weight of basic kit</b>	<b>161.0 kg</b>	<b>161.0 kg</b>	
<b>Overall height of basic kit</b>	<b>295 mm</b>	<b>295 mm</b>	

Basic kit with <b>concrete-lined steel cover</b> :			Clearance height: 190 mm
Test classes according to DIN EN 124	<b>B 125<sup>2</sup></b>	<b>D 400<sup>3</sup></b>	
Complete cover	173.0 kg	173.0 kg	
Single cover	86.5 kg	86.5 kg	
Hot-dip galvanised steel frame	54.0 kg	54.0 kg	
Top frame (standard height)	31.0 kg	31.0 kg	
Base plate	6.0 kg	6.0 kg	
<b>Total weight of basic kit</b>	<b>264.0 kg</b>	<b>264.0 kg</b>	
<b>Overall height of basic kit</b>	<b>295 mm</b>	<b>295 mm</b>	

Basic kit with <b>paveable steel cover</b> : (paveable height 45 mm)			Clearance height: 190 mm
Test classes according to DIN EN 124	<b>B 125<sup>2</sup></b>	<b>D 400<sup>3</sup></b>	
Complete cover (without paving)	185.0 kg	15.0 kg	
Single cover (without paving)	92.5 kg	92.5 kg	
Hot-dip galvanised steel frame	46.0 kg	46.0 kg	
Top frame (standard height)	31.0 kg	31.0 kg	
Base plate	6.0 kg	6.0 kg	
<b>Total weight of basic kit</b>	<b>268.0 kg</b>	<b>268.0 kg</b>	
<b>Overall height of basic kit</b>	<b>340 mm</b>	<b>340 mm</b>	



## QualityBox PC EK628 Frame

Internal dimensions: 400 x 1600 mm  
Outer dimensions: 550 x 1730 mm



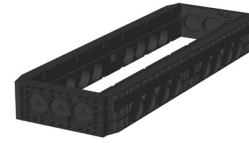
### Frame 70 mm

Art. no.: 06 628 0058E  
3 x Ø 110  
Weight: 18.2 kg



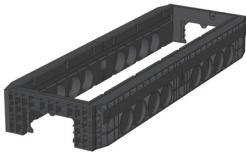
### Frame 70 mm overbuild

Art. no.: 06 628 0358 E  
3 x Ø 110  
Weight: 18.2 kg



### Frame 220 mm

Art. no.: 06 628 0052E  
3 x Ø 110  
8 x Ø 110  
Weight: 44.5 kg



### Frame 220 mm

Art. no.: 06 628 0076E  
1 x rectangular  
8 x Ø 110  
Weight: 43.0 kg



## QualityBox PC EK628

### Order numbers

Internal dimensions: 400 x 1600 mm

Outer dimensions: 550 x 1730 mm

<b>Manhole with cast-iron cover, lockable <sup>4</sup></b>	<b>Order number</b>
Basic kit D 400, hex locking mechanism	06 628 1204
Basic kit D 400, hex socket locking mechanism	06 628 1205
Basic kit D 400, LIC-lock locking mechanism	06 628 1206
Basic kit D 400, COLT/TELENET locking mechanism	06 628 1207
<b>Accessories for cast-iron cover, lockable</b>	
4 x hex locking mechanism	50 000 6200
4 x hex socket locking mechanism	50 000 7200
4 x LIC-lock locking mechanisms	50 000 8200
4 x COLT/TELENET locking mechanism	50 000 9200
Sealing plug for locking mechanism, black	70 046 0716
Concrete-lined steel cover, B 125, 2-piece	70 046 1275E
Concrete-lined steel cover, D 400, 2-piece	70 046 1270E
Steel frame	70 046 0705E
<b>Manhole with concrete-lined steel cover, lockable <sup>4</sup></b>	<b>Order number</b>
Basic kit B 125, not locked, locks retrofittable	06 628 1029
Basic kit D 400, hex locking mechanism	06 628 1030
Basic kit D 400, hex socket locking mechanism	06 628 1031
Basic kit D 400, LIC-lock locking mechanism	06 628 1032
Basic kit D 400, COLT/TELENET locking mechanism	06 628 1033
<b>Accessories for concrete-lined steel cover, lockable</b>	
4 x hex locking mechanism	50 000 6200
4 x hex socket locking mechanism	50 000 7200
4 x LIC-lock locking mechanisms	50 000 8200
4 x COLT/TELENET locking mechanism	50 000 9200
Sealing plug for locking mechanism, black	70 046 0716
Concrete-lined steel cover, B 125, 2-piece	70 046 1275E
Concrete-lined steel cover, D 400, 2-piece	70 046 1270E
Steel frame	70 046 0705E
<b>Manhole with paveable steel cover, lockable <sup>4</sup></b>	<b>Order number</b>
Basic kit B 125, not locked, locks retrofittable	06 628 1049
Basic kit D 400, unlocked, locks retrofittable	06 628 1050
<b>Accessories for paveable steel cover, lockable</b>	
4 x hex locking mechanism	50 000 6300
4 x hex socket locking mechanism	50 000 7300
4 x LIC-lock locking mechanisms	50 000 8300
4 x COLT/TELENET locking mechanism	50 000 9300
Sealing plug for locking mechanism, black	70 046 0716
Paveable steel cover, D 400, 2-piece	70 088 2100E
Steel frame	70 088 2120E
<b>For all basic kits</b>	<b>Order number</b>
Top frame, height 140 mm	06 628 0082E
Base plate, height 5 mm	06 628 0054E