



Manhole EK648

Basic kits

Internal dimensions: 550 x 1400 mm

Outer dimensions: 720 x 1540 mm

Basic kit with concrete-lined steel cover:			Clearance height: 190 mm
Test classes according to DIN EN 124	B 125²	D 400³	
Complete cover	199.0 kg	199.0 kg	
Single cover	99.5 kg	99.5 kg	
Hot-dip galvanised steel frame	42.0 kg	42.0 kg	
Top frame (standard height)	25.5 kg	25.5 kg	
Base plate	7.0 kg	7.0 kg	
Total weight of basic kit	273.5 kg	273.5 kg	
Overall height of basic kit	295 mm	295 mm	

Basic kit with paveable steel cover: (paveable height 45 mm)			Clearance height: 190 mm
Test classes according to DIN EN 124	B 125²	D 400³	
Complete cover (without paving)	217.0 kg	217.0 kg	
Single cover (without paving)	108.5 kg	108.5 kg	
Hot-dip galvanised steel frame	51.0 kg	55.0 kg	
Top frame (standard height)	26.0 kg	26.0 kg	
Base plate	8.0 kg	8.0 kg	
Total weight of basic kit	302.0 kg	302.0 kg	
Overall height of basic kit	355 mm	355 mm	

Frame



Frame 70 mm

Art. no.: 06 648 0058E

5 x Ø 110

Weight: 16.5 kg

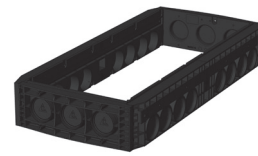


**Frame 70 mm
overbuild**

Art. no.: 06 648 0358E

5 x Ø 110

Weight: 16.5 kg



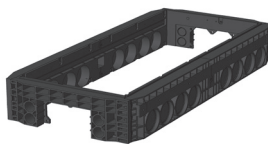
Frame 220 mm

Art. no.: 06 648 0052E

3 x Ø 110

8 x Ø 110

Weight: 25.5 kg



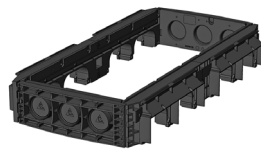
Frame 220 mm

Art. no.: 06 648 0076E

4 x Ø 50 / 1 x rectangular

8 x Ø 110

Weight: 24.8 kg



Frame 220 mm

Art. no.: 06 648 0085E

3 x Ø 110

4 x rectangular

Weight: 20.7 kg



QualityBox PC EK648 Order numbers

Internal dimensions: 550 x 1400 mm

Outer dimensions: 720 x 1540 mm

Manhole with concrete-lined steel cover, lockable ⁴	Order number
Basic kit B 125, not locked, locks retrofittable	06 648 1003
Basic kit D 400, hex locking mechanism	06 648 1004
Basic kit D 400, hex socket locking mechanism	06 648 1005
Basic kit D 400, LIC-lock locking mechanism	06 648 1006
Basic kit D 400, COLT/TELENET locking mechanism	06 648 1007
Accessories for concrete cover, lockable	
6 x hex locking mechanism	50 000 6020
6 x hex socket locking mechanism	50 000 6040
6 x LIC-lock locking mechanisms	50 000 6060
6 x COLT/TELENET locking mechanism	50 000 6080
Sealing plug for locking mechanism, black	70 046 0716
Concrete-lined steel cover, B 125, 3-piece	70 045 6575E
Concrete-lined steel cover, D 400, 3-piece	70 045 6570E
Steel frame	70 041 9980E
Manhole with paveable steel cover, lockable ⁴	Order number
Basic kit B 125, not locked, locks retrofittable	06 648 1011
Basic kit D 400, unlocked, locks retrofittable	06 648 1021
Accessories for paveable steel cover, lockable	
6 x hex locking mechanism	50 000 6500
6 x hex socket locking mechanism	50 000 7500
6 x LIC-lock locking mechanisms	50 000 8500
6 x COLT/TELENET locking mechanism	50 000 9500
Sealing plug for locking mechanism, black	70 046 0716
Paveable steel cover, D 400, 3-piece	70 088 2400E
Steel frame	70 088 2420E
For all basic kits	Order number
Top frame, height 140 mm	06 648 0082E
Base plate, height 5 mm	06 648 0054E