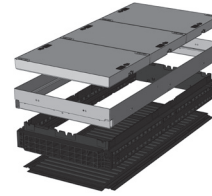




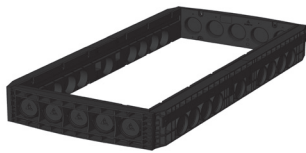
QualityBox PC EK728 Basic kits

Internal dimensions: 800 x 1825 mm
Outer dimensions: 960 x 1985 mm

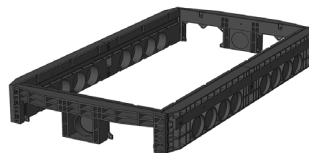
Basic kit with concrete-lined steel cover:		Clearance height: 195 mm
Test classes according to DIN EN 124	B 125²	D 400³
Complete cover	433.0 kg	433.0 kg
Single cover	144.0 kg	144.0 kg
Hot-dip galvanised steel frame	65.0 kg	65.0 kg
Top frame (standard height)	45.5 kg	45.5 kg
Base plate	12.0 kg	12.0 kg
Total weight of basic kit	555.5 kg	555.5 kg
Overall height of basic kit	310 mm	310 mm



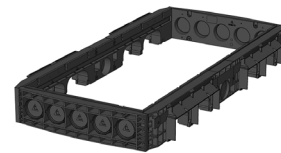
Frame



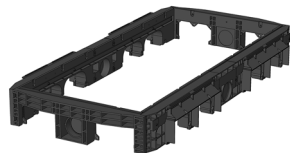
Frame 220 mm
Art. no.: 06 728 0052E
5 x Ø 110
9 x Ø 110
Weight: 55.0 kg



Frame 220 mm
Art. no.: 06 728 0061E
2 x rectangular / 1 x Ø 110
9 x Ø 110
Weight: 50.0 kg



Frame 220 mm
Art. no.: 06 728 0085E
5 x Ø 110
4 x rectangular / 1 x Ø 110
Weight: 40.0 kg



Frame 220 mm
Art. no.: 06 728 0087E
2 x rectangular / 1 x Ø 110
4 x rectangular / 1 x Ø 110
Weight: 54.0 kg



QualityBox PC EK728 Order numbers

Internal dimensions: 800 x 1825 mm

Outer dimensions: 960 x 1985 mm

Manhole with concrete-lined steel cover, lockable ⁴	Order number
Basic kit B 125, not locked, locks retrofittable	06 728 1002
Basic kit D 400, hex locking mechanism	06 728 1003
Basic kit D 400, hex socket locking mechanism	06 728 1004
Basic kit D 400, LIC-lock locking mechanism	06 728 1005
Basic kit D 400, COLT/TELENET locking mechanism	06 728 1006
Accessories for concrete-lined steel cover, lockable	
6 x hex locking mechanism	50 000 6500
6 x hex socket locking mechanism	50 000 7500
6 x LIC-lock locking mechanisms	50 000 8500
6 x COLT/TELENET locking mechanism	50 000 9500
Sealing plug for locking mechanism, black	70 046 0716
Concrete-lined steel cover, B 125, 3-piece	70 049 7275E
Concrete-lined steel cover, D 400, 3-piece	70 049 7270E
Steel frame	70 049 6180E
For all basic kits	Order number
Top frame, height 140 mm	06 728 0082E
Base plate, height 5 mm	06 728 0054E