



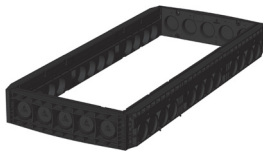
QualityBox PC EK738 Basic kits

Internal dimensions: 800 x 2000 mm
Outer dimensions: 960 x 2160 mm

Basic kit with cast-iron cover:		Clearance height: 100 mm
Test classes according to DIN EN 124	B 125²	
Complete cover	307.0 kg	
Single cover	61.4 kg	
Hot-dip galvanised steel frame	39.0 kg	
Top frame (standard height)	52.0 kg	
Base plate	13.0 kg	
Total weight of basic kit	411.0 kg	
Overall height of basic kit	240 mm	

Basic kit with concrete-lined steel cover:			Clearance height: 195 mm
Test classes according to DIN EN 124	B 125²	D 400³	
Complete cover	471.0 kg	471.0 kg	
Single cover	157.0 kg	157.0 kg	
Hot-dip galvanised steel frame	62.5 kg	62.5 kg	
Top frame (standard height)	52.0 kg	52.0 kg	
Base plate	13.0 kg	13.0 kg	
Total weight of basic kit	598.5 kg	598.5 kg	
Overall height of basic kit	310 mm	310 mm	

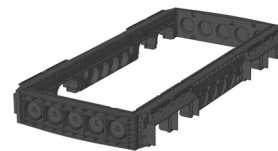
Frame



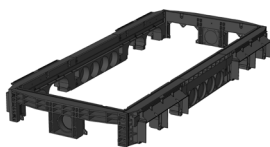
Frame 220 mm
Art. no.: 06 738 0052E
5 x Ø 110
12 x Ø 110
Weight: 62.5 kg



Frame 220 mm
Art. no.: 06 738 0061E
2 x rectangular / 1 x Ø 110
12 x Ø 110
Weight: 57.0 kg



Frame 220 mm
Art. no.: 06 738 0085E
5 x Ø 110
4 x rectangular / 4 x Ø 110
Weight: 65.5 kg



Frame 220 mm
Art. no.: 06 738 0087E
2 x rectangular / 1 x Ø 110
4 x rectangular / 4 x Ø 110
Weight: 59.0 kg



QualityBox PC EK738 Order numbers

Internal dimensions: 800 x 2000 mm

Outer dimensions: 960 x 2160 mm

Manhole with cast-iron cover, screwed down	Order number
Basic kit B 125, not screwed, screw connection retrofittable	06 738 1003

Accessories for cast-iron cover, screwed down	
14 x hex screw connection	50 000 5800
14 x hex socket screw connection	50 000 5950
14 x LIC-lock screw connections	50 000 5900
14 x COLT/TELENET screw connection	50 000 5960
Sealing plug for screw connection, black	70 043 0300
Cast-iron cover B 125, 5-piece, with joint bars	70 044 6600E
Steel frame	70 044 7499E

Manhole with concrete-lined steel cover, lockable ⁴	Order number
Basic kit B 125, not locked, locks retrofittable	06 738 1008
Basic kit D 400, hex locking mechanism	06 738 1010
Basic kit D 400, hex socket locking mechanism	06 738 1011
Basic kit D 400, LIC-lock locking mechanism	06 738 1012
Basic kit D 400, COLT/TELENET locking mechanism	06 738 1013

Accessories for concrete-lined steel cover, lockable	
6 x hex locking mechanism	50 000 6500
6 x hex socket locking mechanism	50 000 7500
6 x LIC-lock locking mechanisms	50 000 8500
6 x COLT/TELENET locking mechanism	50 000 9500
Sealing plug for locking mechanism, black	70 046 0716
Concrete-lined steel cover, B 125, 3-piece	70 049 7375E
Concrete-lined steel cover, D 400, 3-piece	70 049 7370E
Steel frame	70 049 6280E

For all basic kits	Order number
Top frame, height 140 mm	06 738 0082E
Base plate, height 5 mm	06 738 0054E