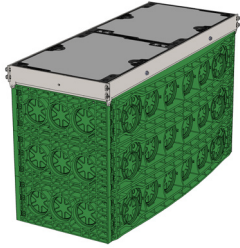




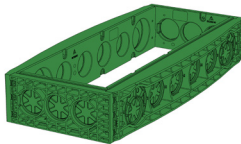
QualityBox PET EK478

Internal dimensions: 400 x 1165 mm

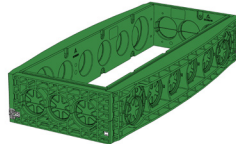
Outer dimensions: 590 x 1300 mm

PET manhole with cast concrete cover:		Clearance height: 655 mm (Example shows 3 x 220 mm frame)
Test classes according to DIN EN 124	D 400³	
Complete cover	160.0 kg	
Single cover	80.0 kg	
Steel frame, drilled, hot-dip galvanised	18.5 kg	
Single frame	27.0 kg	
Base plate	1.5 kg	
Total weight of PET manhole	261.0 kg	
(with 3 frames 220 mm - as per the graphic)		

Frame



Frame 220 mm
 Art. no.: 06 478 0752E
 3 x Ø 110
 6 x Ø 110
 Weight: 27.0 kg



Frame 220 mm overbuild
 Art. no.: 06 478 0773 E
 3 x Ø 110 overbuild
 6 x Ø 110
 Weight: 27.0 kg

Order number

Manhole with cast concrete cover, lockable ⁴	Order number
Basic kit D 400, consisting of <ul style="list-style-type: none"> • Cover • 1 x H 220 mm frame • Base plate equates to a height of 308 mm	06 478 7550