

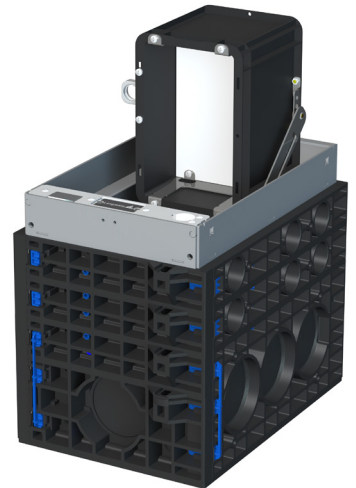
Small underground distribution system

EK410 *flex*

We have designed the underground distribution systems of the TechnicBox® series such that everything that needs to be underground is well protected yet also easily accessible to authorised personnel in all weather conditions. Our underground distribution systems are modern, flood-proof connection and distribution systems for electricity, water and telecommunication lines suitable for underground installation. We have a number of standard designs to offer our customers perfect solutions for modern infrastructure and urban design.

Advantages

- Greater protection through an "invisible" solution for sensitive or critical infrastructure
- Faster approvals due to being a "solution that can be integrated into the cityscape" and that can be installed at special listed sites
- Lower (consequential) costs at sites that suffer from high levels of vandalism (stadiums, bus stops) or sites at which cabinets are frequently damaged or knocked over
- More space in tight public spaces
- Fewer compromises due to the variable positioning of connection solutions at the ideal site
- Greater availability compared to mobile solutions, as connection and operating equipment is always on site (no additional technicians needed at short notice for commissioning)



▲ EK410 flex with plastic submersion hood

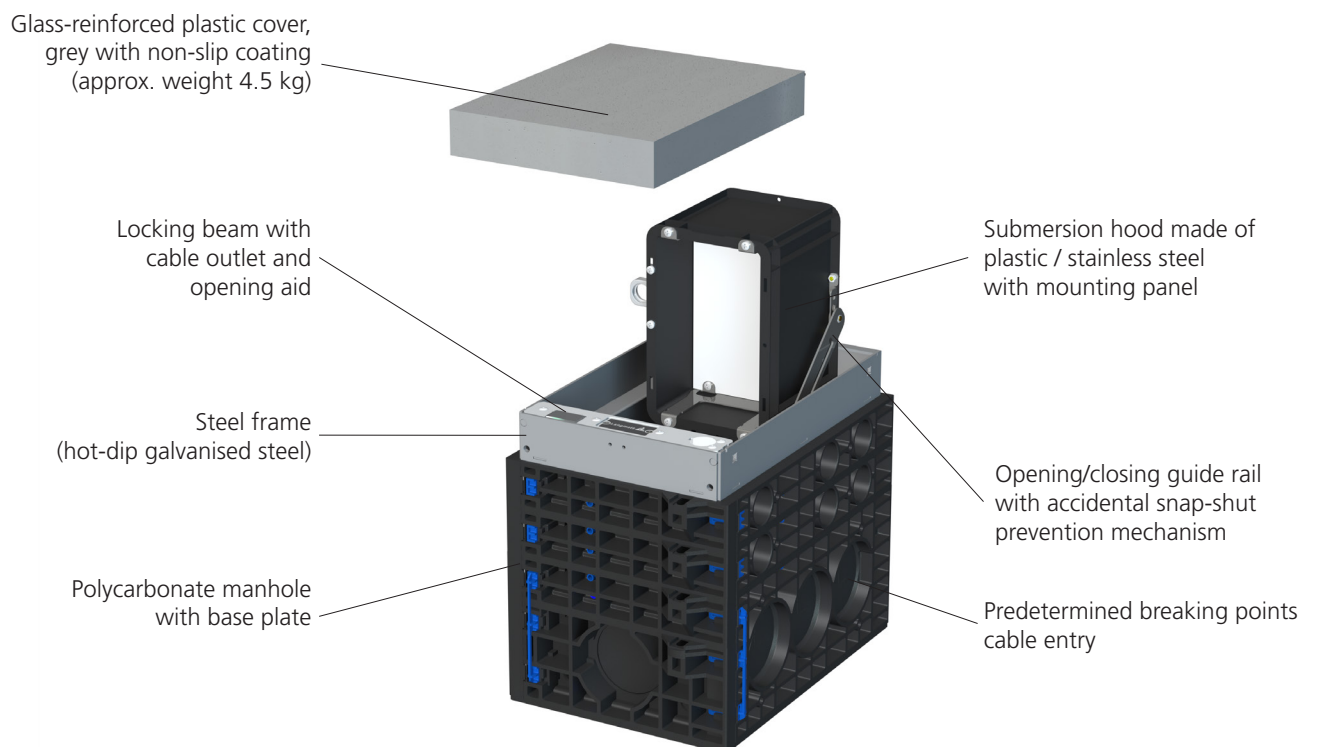
Advantages of Langmatz polycarbonate manholes

- Polycarbonate (PC) optimised for manhole construction with patented 3D ribFrame® technology
- High-quality polycarbonate with high temperature, chemical, UV and weather resistance
- Modular basic kits enable customers to accommodate numerous manhole heights and clear dimensions
- High flexibility with regard to insertion of media due to predetermined breaking points and various pipe inlets

Technical data

Designation	Langmatz underground distribution system EK410 flex
Dimensions	Length: 545 mm, Width: 360 mm, Height 435 mm Clear dimension 250 x 400 mm (other heights available)
Weight	Approx. 29 kg
Cover	Plastic cover (glass-reinforced plastic)
Load class	125 kN or 12.5 t
Body material	Polycarbonate
Top frame material	Galvanised steel
Submersion hood material	Polypropylene or stainless steel
Mounting panel material	Polycarbonate
Dimensions of mounting panel	147 x 224 mm, max. installation depth (in the event of 1-metre deep flooding) 45 mm


Design



Functions

- Extremely compact design and lightweight (height 435 mm, weight 29 kg)
- Flexible expansion options thanks to mounting panel in the submersion hood (installation space LxWxD 264 x 164 x 140 mm)
- Plastic cover and submersion hood permit radio wave transmission
- Cover can be locked and is easy to remove (approx. weight 4.5 kg)
- Submersion hood with swivelling functions for ease of operation or simple service or maintenance work
- Locking beam with opening aid and cable outlet opening (approx. 50 x 30 mm)

Variants

Submersion hood material	Item no.	Illustration
PP plastic	064101500	
Stainless steel V2A	064101501	