

Triangular Cast-iron Hinged Cover EK 428

for clear dimension 800 x 1400 mm

The Langmatz triangular cast-iron hinged cover EK 428 is a quality product combining considerable innovation with many tried and tested features. The ergonomic triangular hinged cover is a robust cover system. It stands out through its ease of handling, simple operation and top-notch quality.

Advantages

Safety

- Easy operation: low weight – operating force of approximately 25 kg
- Safety catch to prevent the opened cover from accidentally falling shut
- Fastening clamp can be released with ease thanks to sophisticated spring mechanism
- Cover is secured via 90°-degree locking mechanism

Flexibility

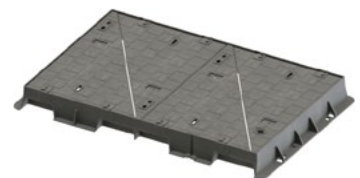
- Optional height adjustment via M8 hex screw
- Opening angle ~ 115°

Innovative features

- Surface in pavement design
- Paveable on all sides



Triangular hinged cover EK 428
opened



Triangular hinged cover EK 428
closed

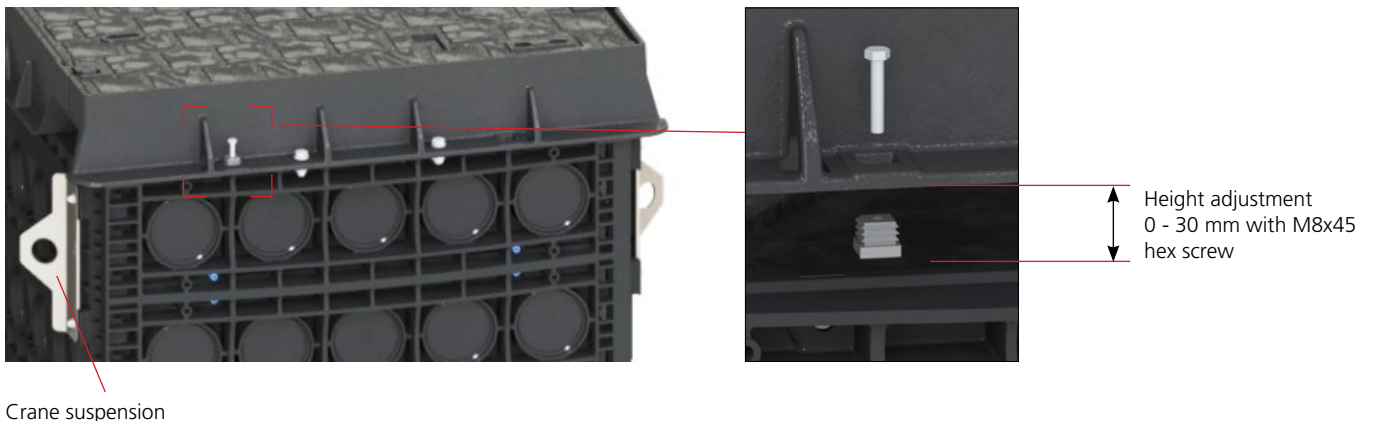


Triangular hinged cover EK 428 on an
example manhole; 1 cover opened

Technical data

Designation:	Triangular hinged cover EK 428
Dimensions (L x W x H):	590 x 1030 x 140 mm
For clear dimension:	800 x 1400 mm
Total weight:	approx. 315 kg
Weight per cover:	approx. 57 kg
Cast iron frame weight:	approx. 87 kg
Height adjustment:	optionally up to 30 mm with M8x45 hex screws
Material (cover; frame):	cast iron (EN-GJS-500-7)
Colour:	RAL 9011
Load class:	D 400 acc. to EN 124
Surface design:	pavement design
Locking system:	90° locking mechanism

Optional height adjustment



Scope of delivery

- 1x accessories kit for optional height adjustment
- 1x COLT/TELENT/OTC spanner
- 1x operating tool



Accessories kit for optional height adjustment
- 4x M8x45 hex screw
- 4x plastic plug with M8 thread



COLT/TELENT/OTC
spanner



operating tool