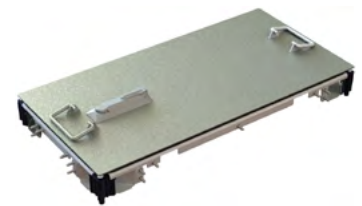


Access Protection for Manholes

The access protection for manholes from Langmatz is a protection system in resistance class RC 2 for polycarbonate or concrete manholes. It is used to protect against unauthorised access.

The system comes in various safety levels. It can be positioned freely at any height in the manhole and various manhole covers such as paved, cast iron, etc. are possible. The system is easy to retrofit.



Access protection for manholes

Versions

Access protection for manholes

The standard version in resistance class RC 2 prevents unauthorised access by means of a swivel lever lock and predetermined breaking points at the lifting handles.

Access protection for manholes *sealed*

Also meets RC 2 resistance class requirements and is also surface water-tight. This prevents unauthorised access and ingress of liquids.

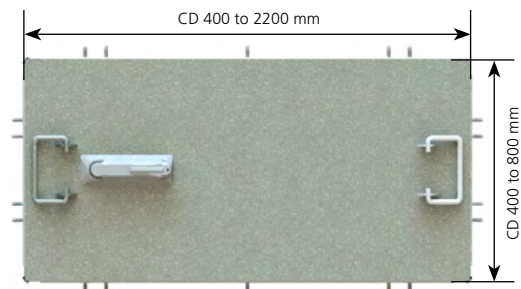
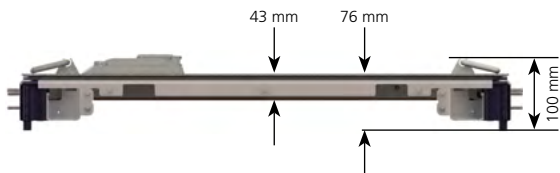
Access protection for manholes *sealed & drained*

With RC 2 resistance, surface water-tightness and additional draining function, this version protects against unauthorised access and ingress of liquids, and drains off these liquids immediately, e.g. to protect against arson.

Technical data

Designation:	Access protection for manholes
Material:	Stainless steel
Sizes:	<ul style="list-style-type: none"> • For all Langmatz polycarbonate manholes CD 400 to 2200 mm • Other sizes available on request, with tolerance compensation of +/- 5 mm
Weight:	E.g. 12.5 kg at CD 400 x 800 mm, 57 kg at CD 800 x 2200 mm
Load:	Max. 500 kg
Resistance class:	RC 2 with predetermined breaking points at the lifting handles

Dimensions



Other sizes on request

Scope of delivery/Design

Version

Standard

- Cover with swivel lever lock and predetermined breaking points at the lifting handles
- Support profiles for latching and locking of the cover

Version

sealed

Like standard version, additionally with

- Sealing profile, sealing frame angle bracket and tolerance compensation for sealing of the cover against the sealing frame
- Silicone Sikaflex Pro 3 for sealing of the support frame against the manhole wall

Version

sealed & drained

Like sealed version, additionally with

- Drainage hose and mounting clamps

